



[Go to Product page](#)

Datasheet for ABIN6751235  
**anti-SLC29A1 antibody (Ser254)**

1 Image

Overview

Quantity:	200 µL
Target:	SLC29A1
Binding Specificity:	Ser254
Reactivity:	Human
Host:	Rabbit
Clonality:	Polyclonal
Conjugate:	This SLC29A1 antibody is un-conjugated
Application:	Western Blotting (WB), Immunohistochemistry (Paraffin-embedded Sections) (IHC (p))

Product Details

Immunogen:	KLH conjugated synthetic peptide corresponding to amino acid residues surrounding S254 of human ENT1. Immunogen type: Synthetic peptide
Isotype:	IgG
Purification:	Immunoaffinity purified

Target Details

Target:	SLC29A1
Alternative Name:	SLC29A1 / ENT1 ( <a href="#">SLC29A1 Products</a> )
Background:	Synonyms : SLC29A1, ENT1, HENT1

## Target Details

Gene ID:	2030
UniProt:	<a href="#">Q99808</a>
Pathways:	<a href="#">Carbohydrate Homeostasis</a> , <a href="#">Synaptic Membrane</a>

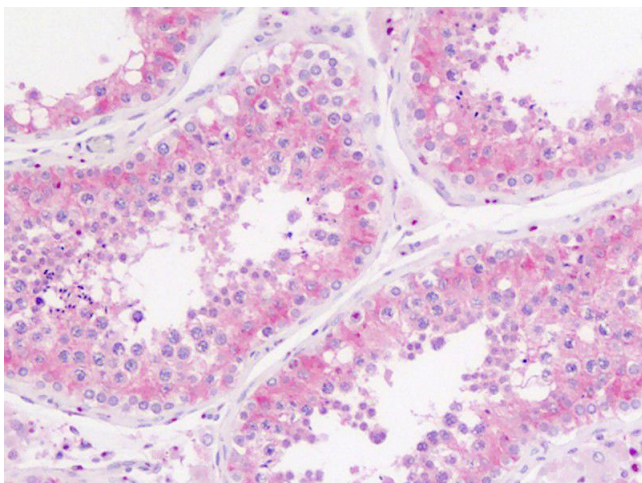
## Application Details

Application Notes:	IHC-P (10 µg/mL), WB (1:1000)
Restrictions:	For Research Use only

## Handling

Buffer:	PBS with 0.09 % (w/v) sodium azide
Preservative:	Sodium azide
Precaution of Use:	WARNING: Reagents contain sodium azide. Sodium azide is very toxic if ingested or inhaled. Avoid contact with skin, eyes, or clothing. Wear eye or face protection when handling. If skin or eye contact occurs, wash with copious amounts of water. If ingested or inhaled, contact a physician immediately. Sodium azide yields toxic hydrazoic acid under acidic conditions. Dilute azide-containing compounds in running water before discarding to avoid accumulation of potentially explosive deposits in lead or copper plumbing.
Storage:	4 °C/-20 °C
Storage Comment:	Maintain refrigerated at 2-8 °C for up to 6 months.
Expiry Date:	6 months

## Images



### Immunohistochemistry (Paraffin-embedded Sections)

**Image 1.** Testis, Human: Formalin-Fixed, Paraffin-Embedded (FFPE)