



Datasheet for ABIN6751239
anti-LEO1 antibody (N-Term)



[Go to Product page](#)

1 Image

Overview

Quantity:	200 µL
Target:	LEO1
Binding Specificity:	N-Term
Reactivity:	Human
Host:	Rabbit
Clonality:	Polyclonal
Conjugate:	This LEO1 antibody is un-conjugated
Application:	Western Blotting (WB), Immunohistochemistry (Paraffin-embedded Sections) (IHC (p))

Product Details

Immunogen:	KLH conjugated synthetic peptide selected from the N-terminal region of human LEO1. Immunogen type: Synthetic peptide
Purification:	Immunoaffinity purified

Target Details

Target:	LEO1
Alternative Name:	LEO1 (LEO1 Products)
Background:	Synonyms : LEO1, RDL
Gene ID:	123169

Target Details

UniProt: [Q8WVC0](#)

Pathways: [Stem Cell Maintenance](#)

Application Details

Application Notes: IHC-P (10 µg/mL), WB (1:1000)

Restrictions: For Research Use only

Handling

Buffer: PBS with 0.09 % (w/v) sodium azide

Preservative: Sodium azide

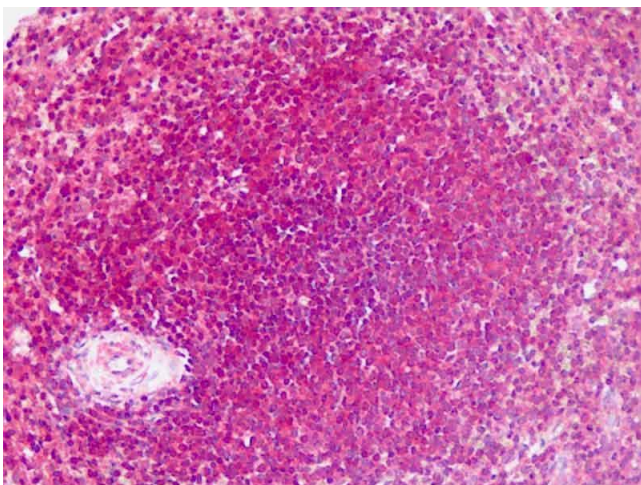
Precaution of Use: **WARNING:** Reagents contain sodium azide. Sodium azide is very toxic if ingested or inhaled. Avoid contact with skin, eyes, or clothing. Wear eye or face protection when handling. If skin or eye contact occurs, wash with copious amounts of water. If ingested or inhaled, contact a physician immediately. Sodium azide yields toxic hydrazoic acid under acidic conditions. Dilute azide-containing compounds in running water before discarding to avoid accumulation of potentially explosive deposits in lead or copper plumbing.

Storage: 4 °C/-20 °C

Storage Comment: Maintain refrigerated at 2-8 °C for up to 6 months.

Expiry Date: 6 months

Images



Immunohistochemistry (Paraffin-embedded Sections)

Image 1. Human Spleen: Formalin-Fixed, Paraffin-Embedded (FFPE)