

Datasheet for ABIN6751247  
**anti-ABL2 antibody (Tyr251)**[Go to Product page](#)

## 1 Image

## Overview

Quantity:	200 µL
Target:	ABL2
Binding Specificity:	Tyr251
Reactivity:	Human
Host:	Rabbit
Clonality:	Polyclonal
Conjugate:	This ABL2 antibody is un-conjugated
Application:	Western Blotting (WB), Immunohistochemistry (Paraffin-embedded Sections) (IHC (p))

## Product Details

Immunogen:	KLH conjugated synthetic peptide corresponding to amino acid residues surrounding Y251 of human ABL. Immunogen type: Synthetic peptide
Purification:	Immunoaffinity purified

## Target Details

Target:	ABL2
Alternative Name:	ABL2 ( <a href="#">ABL2 Products</a> )
Background:	Synonyms : ABL2, Abl-related gene ARG, ABLL, Abelson-related gene protein, ARG, Oncogene abl2, Tyrosine-protein kinase ARG

## Target Details

Gene ID:	27
UniProt:	<a href="#">P42684</a>

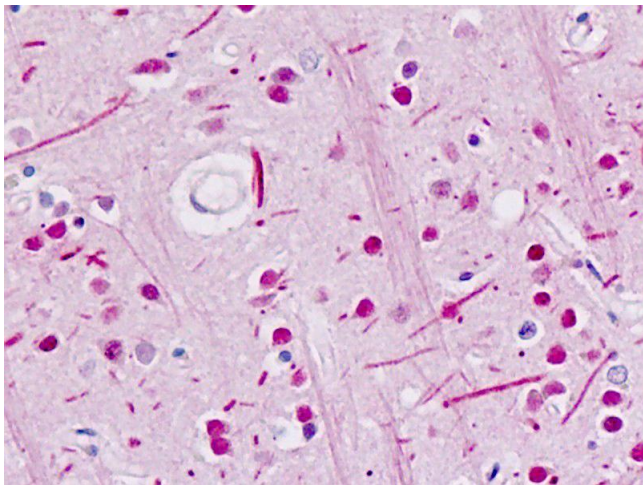
## Application Details

Application Notes:	IHC-P (10 µg/mL), WB (1:1000)
Restrictions:	For Research Use only

## Handling

Buffer:	PBS with 0.09 % (w/v) sodium azide
Preservative:	Sodium azide
Precaution of Use:	WARNING: Reagents contain sodium azide. Sodium azide is very toxic if ingested or inhaled. Avoid contact with skin, eyes, or clothing. Wear eye or face protection when handling. If skin or eye contact occurs, wash with copious amounts of water. If ingested or inhaled, contact a physician immediately. Sodium azide yields toxic hydrazoic acid under acidic conditions. Dilute azide-containing compounds in running water before discarding to avoid accumulation of potentially explosive deposits in lead or copper plumbing.
Storage:	4 °C/-20 °C
Storage Comment:	Maintain refrigerated at 2-8 °C for up to 6 months.
Expiry Date:	6 months

## Images



**Immunohistochemistry (Paraffin-embedded Sections)**

**Image 1.** Human Brain: Formalin-Fixed, Paraffin-Embedded (FFPE)