



[Go to Product page](#)

Datasheet for ABIN6751254

## anti-SPRY4 antibody (C-Term)

### 1 Image

#### Overview

Quantity:	200 µL
Target:	SPRY4
Binding Specificity:	C-Term
Reactivity:	Human
Host:	Rabbit
Clonality:	Polyclonal
Conjugate:	This SPRY4 antibody is un-conjugated
Application:	Western Blotting (WB), Immunohistochemistry (Paraffin-embedded Sections) (IHC (p))

#### Product Details

Immunogen:	KLH conjugated synthetic peptide selected from the C-terminal region of human SPRY4. Immunogen type: Synthetic peptide
Purification:	Immunoaffinity purified

#### Target Details

Target:	SPRY4
Alternative Name:	Sprouty 4 / SPRY4 ( <a href="#">SPRY4 Products</a> )
Background:	Synonyms : SPRY4, Protein sprouty homolog 4, Sprouty 4, Sprouty homolog 4 (Drosophila), Sprouty 4, Spry-4
Gene ID:	81848

## Target Details

---

UniProt: [Q9C004](#)

## Application Details

---

Application Notes: IHC-P (10 µg/mL), WB (1:1000)

Restrictions: For Research Use only

## Handling

---

Buffer: PBS with 0.09 % (w/v) sodium azide

Preservative: Sodium azide

Precaution of Use: **WARNING:** Reagents contain sodium azide. Sodium azide is very toxic if ingested or inhaled. Avoid contact with skin, eyes, or clothing. Wear eye or face protection when handling. If skin or eye contact occurs, wash with copious amounts of water. If ingested or inhaled, contact a physician immediately. Sodium azide yields toxic hydrazoic acid under acidic conditions. Dilute azide-containing compounds in running water before discarding to avoid accumulation of potentially explosive deposits in lead or copper plumbing.

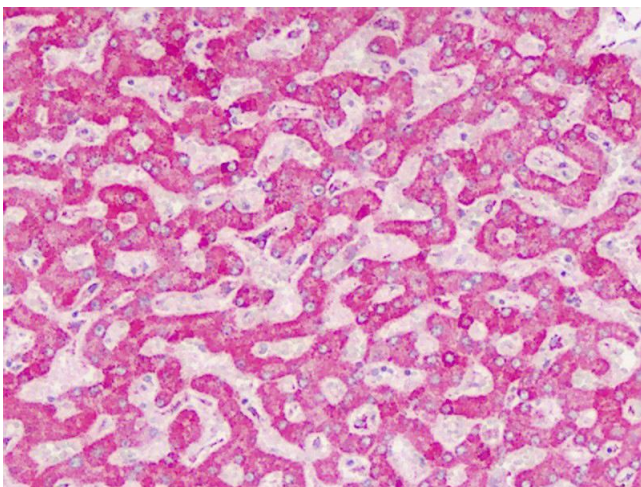
Storage: 4 °C/-20 °C

Storage Comment: Maintain refrigerated at 2-8 °C for up to 6 months.

Expiry Date: 6 months

## Images

---



### Immunohistochemistry (Paraffin-embedded Sections)

**Image 1.** Human Liver: Formalin-Fixed, Paraffin-Embedded (FFPE)