

Datasheet for ABIN6752959  
**anti-PLOD2 antibody (AA 467-516)**[Go to Product page](#)

## 2 Images

## Overview

Quantity:	100 µL
Target:	PLOD2
Binding Specificity:	AA 467-516
Reactivity:	Human, Rat, Mouse, Pig, Rabbit, Cow, Dog, Horse, Monkey
Host:	Rabbit
Clonality:	Polyclonal
Conjugate:	This PLOD2 antibody is un-conjugated
Application:	Western Blotting (WB), Immunohistochemistry (IHC), Immunohistochemistry (Paraffin-embedded Sections) (IHC (p))

## Product Details

Brand:	IHC-plus™
Immunogen:	Synthetic peptide located between aa467-516 of human PLOD2 (O00469-2, NP_891988). Percent identity by BLAST analysis: Human, Chimpanzee, Gorilla, Gibbon, Monkey, Galago, Marmoset, Mouse, Rat, Dog, Bovine, Rabbit, Horse, Pig, Opossum (100%), Platypus (85%).  Type of Immunogen: Synthetic peptide
Specificity:	Human PLOD2
Purification:	Immunoaffinity purified

## Target Details

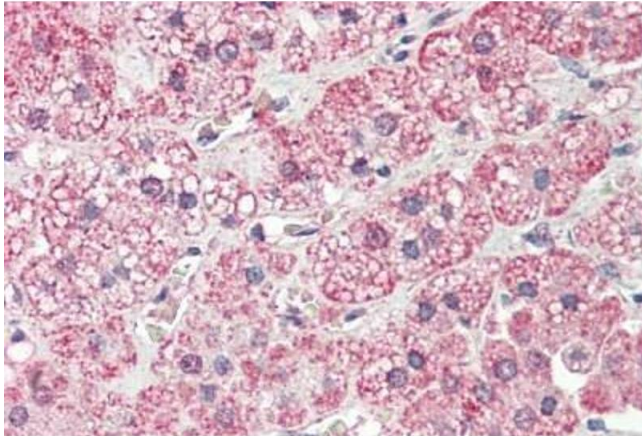
Target:	PLOD2
Alternative Name:	PLOD2 ( <a href="#">PLOD2 Products</a> )
Background:	Name/Gene ID: PLOD2  Synonyms: PLOD2, Lysyl hydroxylase 2, Lysyl hydroxylase 2, TLH, LH2, Lysine hydroxylase 2, Lysyl hydroxylase isoform 2
Gene ID:	5352
NCBI Accession:	<a href="#">NP_891988</a>
Pathways:	<a href="#">SARS-CoV-2 Protein Interactome</a>

## Application Details

Application Notes:	Approved: IHC, IHC-P (5 µg/mL), WB (0.2 - 1 µg/mL)  Usage: Western Blot: Suggested dilution at 1 µg/mL in 5 % skim milk / PBS buffer, and HRP conjugated anti-Rabbit IgG should be diluted in 1: 50,000 - 100,000 as secondary antibody.
Comment:	Target Species of Antibody: Human
Restrictions:	For Research Use only

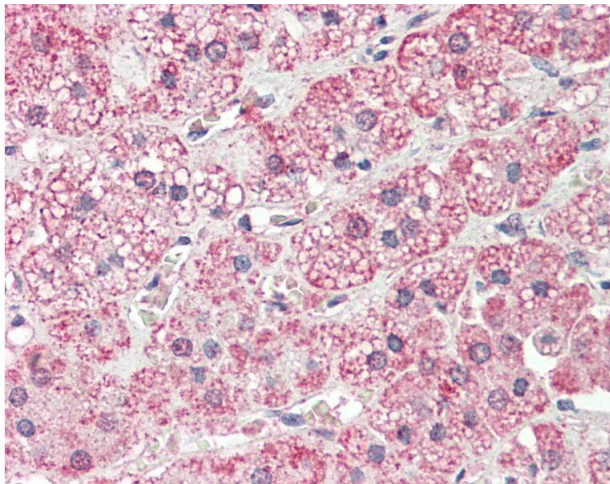
## Handling

Format:	Lyophilized
Reconstitution:	Distilled water
Concentration:	Lot specific
Buffer:	Lyophilized from PBS with 2 % sucrose
Handling Advice:	Avoid repeat freeze-thaw cycles.
Storage:	4 °C, -20 °C
Storage Comment:	Long term: -20°C, the use of 50% glycerol is recommended if storing aliquots in -20°C for long term use (up to 1 year)  Short term (less than 1 week): 4°C. Avoid freeze-thaw cycles.



#### Immunohistochemistry

**Image 1.** Human Adrenal: Formalin-Fixed, Paraffin-Embedded (FFPE)



#### Immunohistochemistry

**Image 2.** Anti-PLOD2 antibody IHC staining of human adrenal. Immunohistochemistry of formalin-fixed, paraffin-embedded tissue after heat-induced antigen retrieval. Antibody concentration 5 ug/ml. This image was taken for the unconjugated form of this product. ...