



[Go to Product page](#)

Datasheet for ABIN6752961
anti-FBXO21 antibody (AA 74-123)

2 Images

Overview

Quantity:	100 µL
Target:	FBXO21
Binding Specificity:	AA 74-123
Reactivity:	Human, Mouse, Rat, Dog, Monkey, Rabbit, Cow, Hamster, Pig, Bat
Host:	Rabbit
Clonality:	Polyclonal
Conjugate:	This FBXO21 antibody is un-conjugated
Application:	Western Blotting (WB), Immunohistochemistry (IHC), Immunohistochemistry (Paraffin-embedded Sections) (IHC (p))

Product Details

Brand:	IHC-plus™
Immunogen:	Synthetic peptide located between aa74-123 of human FBXO21 (O94952, NP_055817). Percent identity by BLAST analysis: Human, Chimpanzee, Gorilla, Orangutan, Gibbon, Galago, Marmoset, Mouse, Rat, Hamster, Elephant, Dog, Bovine, Bat, Rabbit, Pig (100%), Guinea pig (92%), Opossum (85%). Type of Immunogen: Synthetic peptide
Isotype:	IgG
Specificity:	Human FBXO21
Purification:	Immunoaffinity purified

Target Details

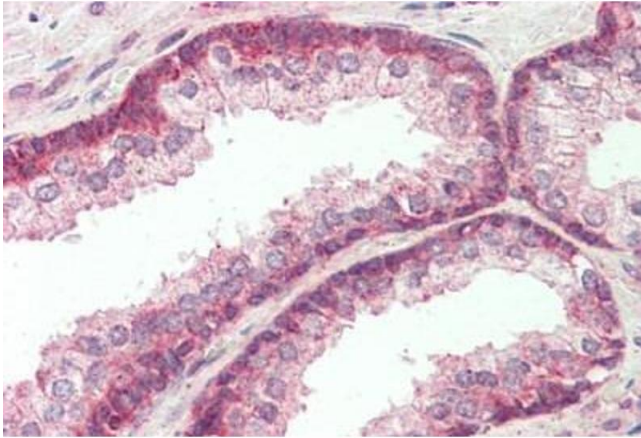
Target:	FBX021
Alternative Name:	FBX021 (FBX021 Products)
Background:	Name/Gene ID: FBX021 Family: F-Box Synonyms: FBX021, FBX21, F-box only protein 21, F-box protein 21, KIAA0875
Gene ID:	23014
NCBI Accession:	NP_055817

Application Details

Application Notes:	Approved: IHC, IHC-P (10 µg/mL), WB (0.2 - 1 µg/mL) Usage: ELISA titer using peptide based assay: 1:312500. Western Blot: Suggested dilution at 1 µg/mL in 5 % skim milk / PBS buffer, and HRP conjugated anti-Rabbit IgG should be diluted in 1:50000 - 100000 as second antibody.
Comment:	Target Species of Antibody: Human
Restrictions:	For Research Use only

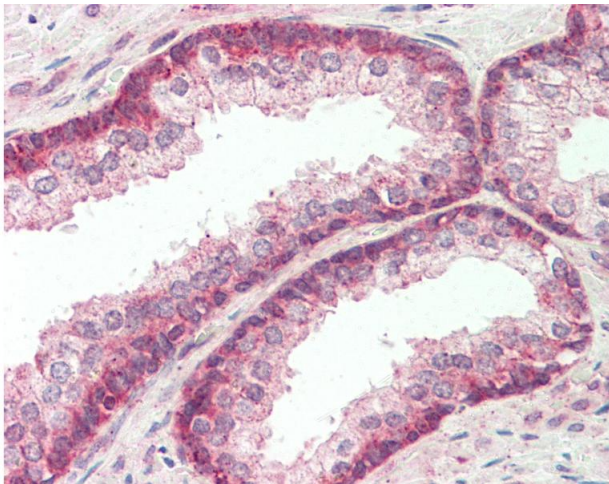
Handling

Format:	Lyophilized
Reconstitution:	Distilled Water.
Concentration:	Lot specific
Buffer:	Lyophilized from PBS with 2 % sucrose
Handling Advice:	Avoid repeat freeze-thaw cycles.
Storage:	4 °C, -20 °C
Storage Comment:	Long term: -20°C, the use of 50% glycerol is recommended if storing aliquots in -20°C for long term use (up to 1 year) Short term (less than 1 week): 4°C. Avoid freeze-thaw cycles.



Immunohistochemistry

Image 1. Human Prostate: Formalin-Fixed, Paraffin-Embedded (FFPE)



Immunohistochemistry

Image 2. Anti-FBXO21 antibody IHC staining of human prostate. Immunohistochemistry of formalin-fixed, paraffin-embedded tissue after heat-induced antigen retrieval. Antibody concentration 10 ug/ml. This image was taken for the unconjugated form of this produ ...