

Datasheet for ABIN6752967  
**anti-LPPR5 antibody (AA 36-85)**

## 2 Images

[Go to Product page](#)

## Overview

Quantity:	100 µL
Target:	LPPR5
Binding Specificity:	AA 36-85
Reactivity:	Human, Mouse, Rat, Cow, Horse, Guinea Pig, Pig, Dog, Monkey, Chicken
Host:	Rabbit
Clonality:	Polyclonal
Conjugate:	This LPPR5 antibody is un-conjugated
Application:	Western Blotting (WB), Immunohistochemistry (IHC), Immunohistochemistry (Paraffin-embedded Sections) (IHC (p))

## Product Details

Brand:	IHC-plus™
Immunogen:	<p>Synthetic peptide located between aa36-85 of human LPPR5 (Q32ZD0, NP_001010861).</p> <p>Percent identity by BLAST analysis: Human, Chimpanzee, Gorilla, Monkey, Marmoset, Mouse, Rat, Bovine, Horse, Pig, Guinea pig, Chicken (100%), Gibbon, Opossum, Platypus (92%), Panda, Dog (83%).</p> <p>Type of Immunogen: Synthetic peptide</p>
Isotype:	IgG
Specificity:	Human LPPR5 / PAP2D
Purification:	Immunoaffinity purified

## Target Details

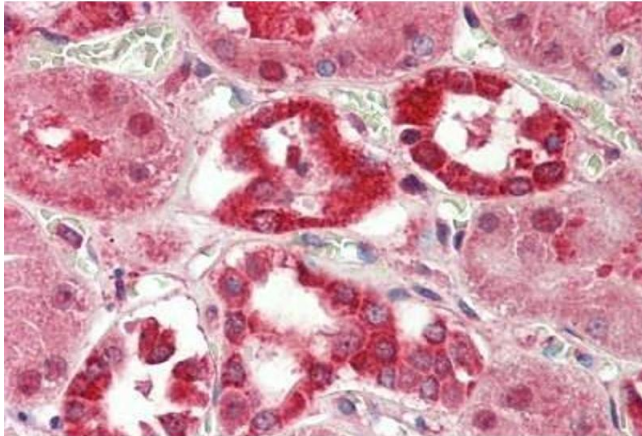
Target:	LPPR5
Alternative Name:	LPPR5 ( <a href="#">LPPR5 Products</a> )
Background:	Name/Gene ID: LPPR5  Synonyms: LPPR5, PAP2, PRG5, PAP2D, Plasticity-related protein 5, PRG-5
Gene ID:	163404
NCBI Accession:	<a href="#">NP_001010861</a>

## Application Details

Application Notes:	Approved: IHC, IHC-P (5 µg/mL), WB (0.2 - 1 µg/mL)  Usage: Western Blot: Suggested dilution at 1 µg/mL in 5 % skim milk / PBS buffer, and HRP conjugated anti-Rabbit IgG should be diluted in 1: 50,000 - 100,000 as second antibody. ELISA titer in peptide based assay: 1:312500.
Comment:	Target Species of Antibody: Human
Restrictions:	For Research Use only

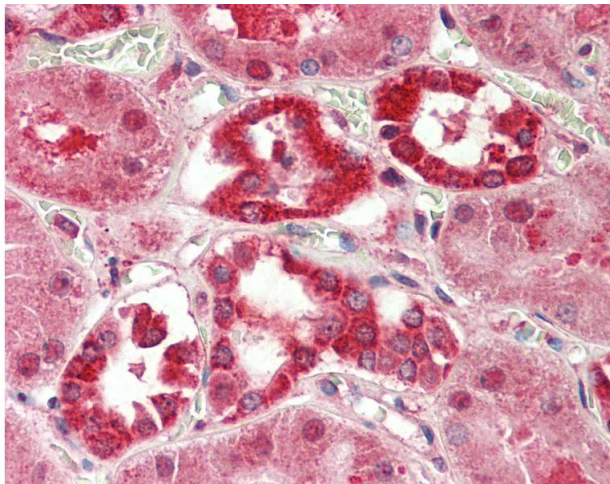
## Handling

Format:	Lyophilized
Reconstitution:	Distilled water
Concentration:	Lot specific
Buffer:	Lyophilized from PBS with 2 % sucrose
Handling Advice:	Avoid repeat freeze-thaw cycles.
Storage:	4 °C, -20 °C
Storage Comment:	Long term: -20°C, the use of 50% glycerol is recommended if storing aliquots in -20°C for long term use (up to 1 year)  Short term (less than 1 week): 4°C. Avoid freeze-thaw cycles.



#### Immunohistochemistry

**Image 1.** Human Kidney: Formalin-Fixed, Paraffin-Embedded (FFPE)



#### Immunohistochemistry

**Image 2.** Anti-LPPR5 antibody IHC staining of human kidney. Immunohistochemistry of formalin-fixed, paraffin-embedded tissue after heat-induced antigen retrieval. Antibody concentration 5 ug/ml. This image was taken for the unconjugated form of this product. ...