

Datasheet for ABIN6752969
anti-HEPACAM2 antibody (AA 216-265)[Go to Product page](#)

2 Images

Overview

Quantity:	100 µL
Target:	HEPACAM2
Binding Specificity:	AA 216-265
Reactivity:	Human, Mouse, Rat, Rabbit, Monkey
Host:	Rabbit
Clonality:	Polyclonal
Conjugate:	This HEPACAM2 antibody is un-conjugated
Application:	Western Blotting (WB), Immunohistochemistry (IHC), Immunohistochemistry (Paraffin-embedded Sections) (IHC (p))

Product Details

Brand:	IHC-plus™
Immunogen:	Synthetic peptide located between aa216-265 of human HEPACAM2 (A8MVW5, NP_001034461). Percent identity by BLAST analysis: Human, Gorilla, Gibbon, Monkey, Galago, Marmoset, Mouse, Rat, Rabbit (100%), Elephant, Dog, Bat, Horse, Guinea pig (92%), Bovine, Turkey, Xenopus (85%), Zebra finch, Chicken (84%). Type of Immunogen: Synthetic peptide
Isotype:	IgG
Specificity:	Human HEPACAM2
Purification:	Immunoaffinity purified

Target Details

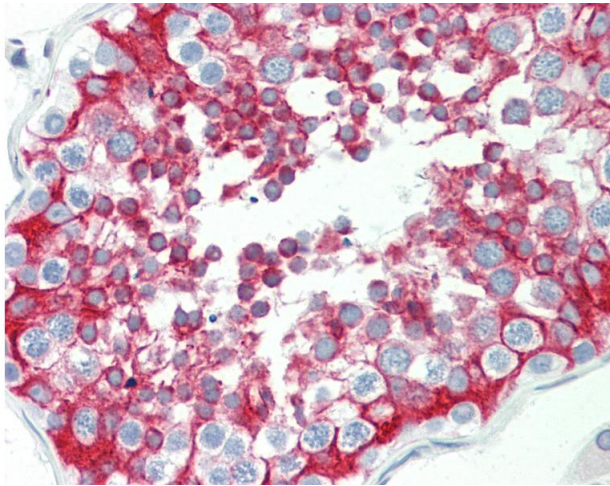
Target:	HEPACAM2
Alternative Name:	HEPACAM2 (HEPACAM2 Products)
Background:	Name/Gene ID: HEPACAM2 Synonyms: HEPACAM2, HEPACAM family member 2, MIK1, Mitotic kinetics regulator
Gene ID:	253012
NCBI Accession:	NP_001034461

Application Details

Application Notes:	Approved: IHC, IHC-P (5 µg/mL), WB (0.2 - 1 µg/mL) Usage: Western Blot: Suggested dilution at 1 µg/mL in 5 % skim milk / PBS buffer, and HRP conjugated anti-Rabbit IgG should be diluted in 1: 50,000 - 100,000 as second antibody. ELISA titer in peptide based assay: 1:62500.
Comment:	Target Species of Antibody: Human
Restrictions:	For Research Use only

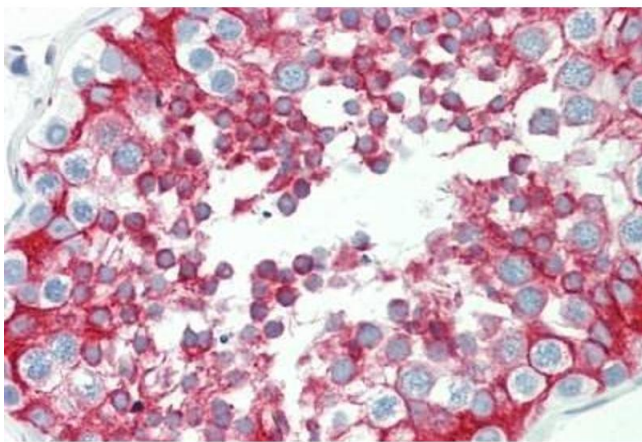
Handling

Format:	Lyophilized
Reconstitution:	Distilled water
Concentration:	Lot specific
Buffer:	Lyophilized from PBS with 2 % sucrose
Handling Advice:	Avoid repeat freeze-thaw cycles.
Storage:	4 °C, -20 °C
Storage Comment:	Long term: -20°C, the use of 50% glycerol is recommended if storing aliquots in -20°C for long term use (up to 1 year) Short term (less than 1 week): 4°C. Avoid freeze-thaw cycles.



Immunohistochemistry

Image 1. Anti-HEPACAM2 antibody IHC staining of human testis. Immunohistochemistry of formalin-fixed, paraffin-embedded tissue after heat-induced antigen retrieval. Antibody concentration 5 ug/ml. This image was taken for the unconjugated form of this produc ...



Immunohistochemistry

Image 2. Human Testis: Formalin-Fixed, Paraffin-Embedded (FFPE)