



[Go to Product page](#)

Datasheet for ABIN6752973

anti-SLC14A1 antibody (AA 119-168)

2 Images

Overview

Quantity:	100 µL
Target:	SLC14A1
Binding Specificity:	AA 119-168
Reactivity:	Human
Host:	Rabbit
Clonality:	Polyclonal
Conjugate:	This SLC14A1 antibody is un-conjugated
Application:	Western Blotting (WB), Immunohistochemistry (IHC), Immunohistochemistry (Paraffin-embedded Sections) (IHC (p))

Product Details

Brand:	IHC-plus™
Immunogen:	Synthetic peptide located between aa119-168 of human SLC14A1 (Q13336, NP_056949). Percent identity by BLAST analysis: Human, Elephant (100%), Gorilla, Monkey, Sheep, Goat, Dog, Pig (92%), Gibbon, Galago, Marmoset, Bovine, Bat, Opossum (85%), Mouse, Horse (83%). Type of Immunogen: Synthetic peptide
Isotype:	IgG
Specificity:	Human SLC14A1
Purification:	Immunoaffinity purified

Target Details

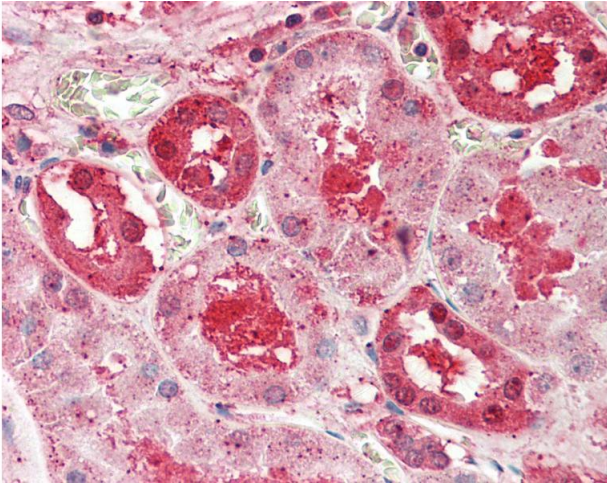
Target:	SLC14A1
Alternative Name:	SLC14A1 / JK (SLC14A1 Products)
Background:	Name/Gene ID: SLC14A1 Subfamily: Urea transporter Family: Transporter Synonyms: SLC14A1, Kidd Blood Group, HsT1341, HUT11, RACH1, RACH2, SLC14A1 JK, Urea transporter 1, UT-B1, Urea transporter-B1, UT1, UTE, JK, Urea transporter, erythrocyte, UT-B
Gene ID:	6563
NCBI Accession:	NP_056949

Application Details

Application Notes:	Approved: IHC, IHC-P (5 µg/mL), WB (0.2 - 1 µg/mL) Usage: ELISA titer using peptide based assay: 1:312500. Western Blot: Suggested dilution at 0.25 µg/mL in 5 % skim milk / PBS buffer, and HRP conjugated anti-Rabbit IgG should be diluted in 1:50000 - 100000 as second antibody.
Comment:	Target Species of Antibody: Human
Restrictions:	For Research Use only

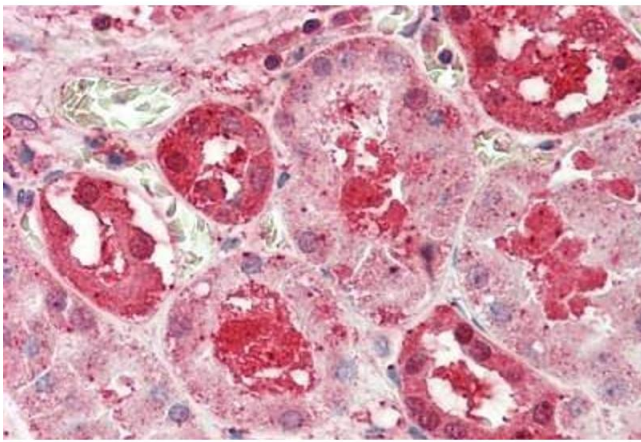
Handling

Format:	Lyophilized
Reconstitution:	Distilled Water.
Concentration:	Lot specific
Buffer:	Lyophilized from PBS with 2 % sucrose
Handling Advice:	Avoid repeat freeze-thaw cycles.
Storage:	4 °C,-20 °C
Storage Comment:	Long term: -20°C, the use of 50% glycerol is recommended if storing aliquots in -20°C for long term use (up to 1 year) Short term (less than 1 week): 4°C. Avoid freeze-thaw cycles.



Immunohistochemistry

Image 1. Anti-SLC14A1 / JK antibody IHC staining of human kidney. Immunohistochemistry of formalin-fixed, paraffin-embedded tissue after heat-induced antigen retrieval. Antibody concentration 5 ug/ml. This image was taken for the unconjugated form of this pr ...



Immunohistochemistry

Image 2. Human Kidney: Formalin-Fixed, Paraffin-Embedded (FFPE)