



Datasheet for ABIN6752978
anti-EDIL3 antibody (AA 71-120)



[Go to Product page](#)

2 Images

Overview

Quantity:	100 µL
Target:	EDIL3 (DEL1)
Binding Specificity:	AA 71-120
Reactivity:	Human, Mouse, Monkey, Rabbit, Zebrafish (Danio rerio), Cow, Dog, Guinea Pig, Chicken, Xenopus laevis
Host:	Rabbit
Clonality:	Polyclonal
Conjugate:	This EDIL3 antibody is un-conjugated
Application:	Western Blotting (WB), Immunohistochemistry (IHC), Immunohistochemistry (Paraffin-embedded Sections) (IHC (p))

Product Details

Brand:	IHC-plus™
Immunogen:	Synthetic peptide located between aa71-120 of human EDIL3 (O43854, NP_005702). Percent identity by BLAST analysis: Human, Gorilla, Orangutan, Gibbon, Monkey, Galago, Mouse, Elephant, Dog, Bovine, Rabbit, Guinea pig, Zebra finch, Chicken, Platypus, Lizard, Xenopus (100%), Horse, Stickleback (92%), Zebrafish (85%). Type of Immunogen: Synthetic peptide
Specificity:	Human EDIL3
Purification:	Immunoaffinity purified

Target Details

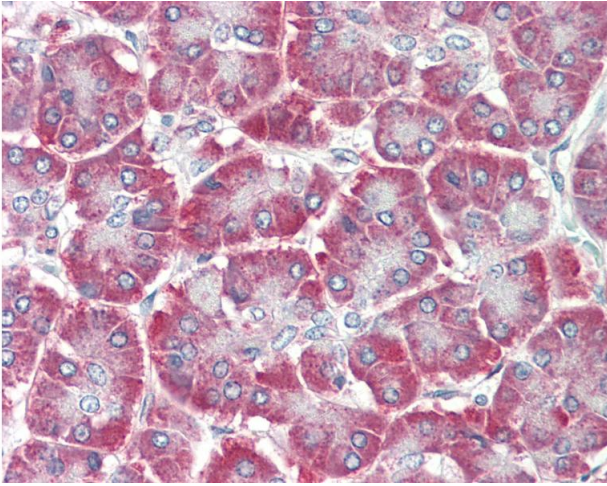
Target:	EDIL3 (DEL1)
Alternative Name:	EDIL3 / DEL1 (DEL1 Products)
Background:	Name/Gene ID: EDIL3 Synonyms: EDIL3, Integrin-binding protein DEL1, DEL1
Gene ID:	10085
NCBI Accession:	NP_005702

Application Details

Application Notes:	Approved: IHC, IHC-P (10 µg/mL), WB (0.2 - 1 µg/mL) Usage: Western Blot: Suggested dilution at 1 µg/mL in 5 % skim milk / PBS buffer, and HRP conjugated anti-Rabbit IgG should be diluted in 1: 50,000 - 100,000 as secondary antibody.
Comment:	Target Species of Antibody: Human
Restrictions:	For Research Use only

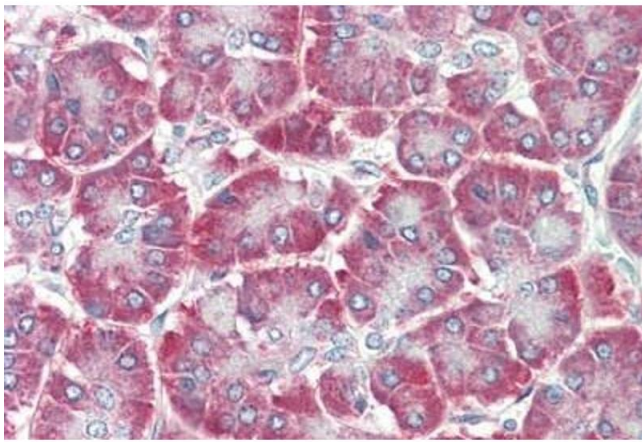
Handling

Format:	Lyophilized
Reconstitution:	Distilled water
Concentration:	Lot specific
Buffer:	Lyophilized from PBS with 2 % sucrose
Handling Advice:	Avoid repeat freeze-thaw cycles.
Storage:	4 °C,-20 °C
Storage Comment:	Long term: -20°C, the use of 50% glycerol is recommended if storing aliquots in -20°C for long term use (up to 1 year) Short term (less than 1 week): 4°C. Avoid freeze-thaw cycles.



Immunohistochemistry

Image 1. Anti-EDIL3 / DEL1 antibody IHC staining of human pancreas. Immunohistochemistry of formalin-fixed, paraffin-embedded tissue after heat-induced antigen retrieval. Antibody concentration 10 ug/ml. This image was taken for the unconjugated form of this ...



Immunohistochemistry

Image 2. Human Pancreas: Formalin-Fixed, Paraffin-Embedded (FFPE)