

Datasheet for ABIN6752979  
**anti-TRIM6 antibody (AA 144-193)**[Go to Product page](#)

## 2 Images

## Overview

Quantity:	100 µL
Target:	TRIM6
Binding Specificity:	AA 144-193
Reactivity:	Human, Rat, Mouse, Rabbit, Cow, Pig, Monkey
Host:	Rabbit
Clonality:	Polyclonal
Conjugate:	This TRIM6 antibody is un-conjugated
Application:	Western Blotting (WB), Immunohistochemistry (IHC), Immunohistochemistry (Paraffin-embedded Sections) (IHC (p))

## Product Details

Brand:	IHC-plus™
Immunogen:	Synthetic peptide located between aa144-193 of human TRIM6 (A8K2A7, NP_001003818). Percent identity by BLAST analysis: Human, Gorilla, Orangutan, Gibbon, Baboon, Monkey (100%), Marmoset (85%), Mouse, Rat (78%).  Type of Immunogen: Synthetic peptide
Isotype:	IgG
Specificity:	Human TRIM6 / RNF89
Purification:	Immunoaffinity purified

## Target Details

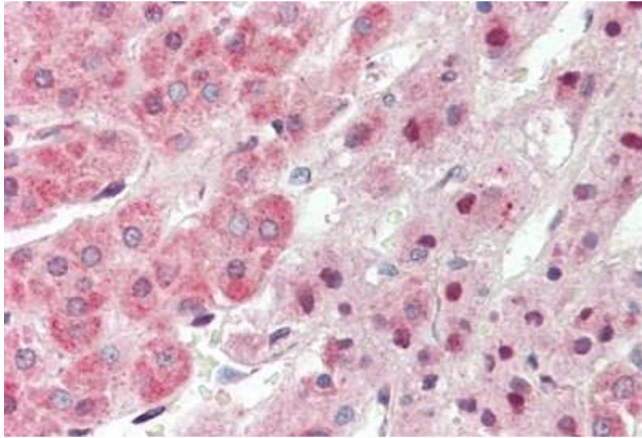
Target:	TRIM6
Alternative Name:	TRIM6 ( <a href="#">TRIM6 Products</a> )
Background:	Name/Gene ID: TRIM6 Family: Tripartite Motif  Synonyms: TRIM6, RING finger protein 89, RNF89, Tripartite motif containing 6, Tripartite motif-containing 6
Gene ID:	117854
NCBI Accession:	<a href="#">NP_001003818</a>

## Application Details

Application Notes:	Approved: IHC, IHC-P (10 µg/mL), WB (0.2 - 1 µg/mL)  Usage: Western Blot: Suggested dilution at 1 µg/mL in 5 % skim milk / PBS buffer, and HRP conjugated anti-Rabbit IgG should be diluted in 1: 50,000 - 100,000 as second antibody. ELISA titer in peptide based assay: 1:62500.
Comment:	Target Species of Antibody: Human
Restrictions:	For Research Use only

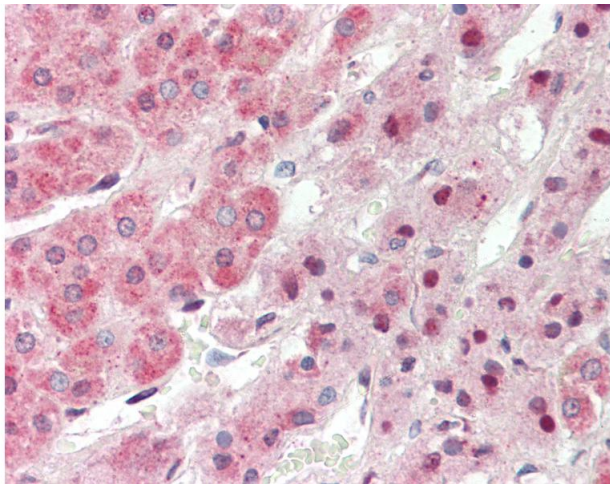
## Handling

Format:	Lyophilized
Reconstitution:	Distilled water
Concentration:	Lot specific
Buffer:	Lyophilized from PBS with 2 % sucrose
Handling Advice:	Avoid repeat freeze-thaw cycles.
Storage:	4 °C,-20 °C
Storage Comment:	Long term: -20°C, the use of 50% glycerol is recommended if storing aliquots in -20°C for long term use (up to 1 year)  Short term (less than 1 week): 4°C. Avoid freeze-thaw cycles.



#### Immunohistochemistry

**Image 1.** Human Adrenal: Formalin-Fixed, Paraffin-Embedded (FFPE)



#### Immunohistochemistry

**Image 2.** Anti-TRIM6 antibody IHC staining of human adrenal. Immunohistochemistry of formalin-fixed, paraffin-embedded tissue after heat-induced antigen retrieval. Antibody concentration 10 ug/ml. This image was taken for the unconjugated form of this product ...