



[Go to Product page](#)

Datasheet for ABIN6752983
anti-RSPRY1 antibody (AA 74-123)

1 Image

Overview

Quantity:	100 µL
Target:	RSPRY1
Binding Specificity:	AA 74-123
Reactivity:	Human, Mouse, Rat, Cow, Dog, Guinea Pig, Horse, Rabbit, Zebrafish (Danio rerio), Bat, Chicken, Hamster, Monkey, Pig
Host:	Rabbit
Clonality:	Polyclonal
Conjugate:	This RSPRY1 antibody is un-conjugated
Application:	Western Blotting (WB), Immunohistochemistry (Paraffin-embedded Sections) (IHC (p)), Immunohistochemistry (IHC)

Product Details

Brand:	IHC-plus™
Immunogen:	Synthetic peptide located between aa74-123 of human RSPRY1 (Q96DX4, NP_588609). Percent identity by BLAST analysis: Human, Chimpanzee, Gorilla, Orangutan, Gibbon, Monkey, Galago, Marmoset, Mouse, Rat, Hamster, Elephant, Panda, Dog, Bovine, Bat, Rabbit, Horse, Pig, Opossum, Guinea pig, Turkey, Zebra finch, Chicken, Zebrafish (100%), Stickleback (92%), Xenopus (85%). Type of Immunogen: Synthetic peptide
Isotype:	IgG

Product Details

Specificity:	Human RSPRY1
Purification:	Immunoaffinity purified

Target Details

Target:	RSPRY1
Alternative Name:	RSPRY1 (RSPRY1 Products)
Background:	Name/Gene ID: RSPRY1 Synonyms: RSPRY1, KIAA1972
Gene ID:	89970
NCBI Accession:	NP_588609

Application Details

Application Notes:	Approved: IHC, IHC-P (10 µg/mL), WB (0.2 - 1 µg/mL) Usage: ELISA titer using peptide based assay: 1:312500. Western Blot: Suggested dilution at 1 µg/mL in 5 % skim milk / PBS buffer, and HRP conjugated anti-Rabbit IgG should be diluted in 1:50000 - 100000 as second antibody.
Comment:	Target Species of Antibody: Human
Restrictions:	For Research Use only

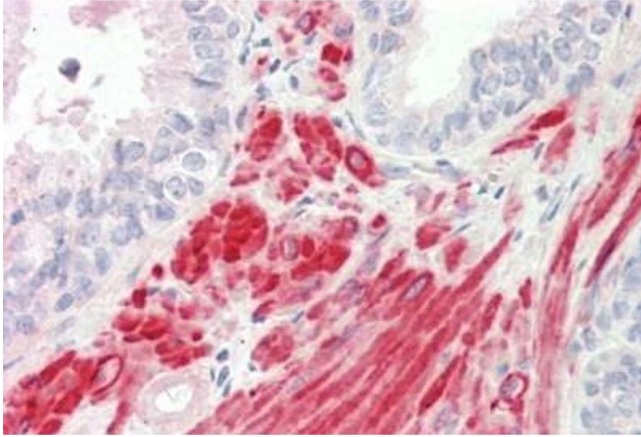
Handling

Format:	Lyophilized
Reconstitution:	Distilled Water.
Concentration:	Lot specific
Buffer:	Lyophilized from PBS with 2 % sucrose
Handling Advice:	Avoid repeat freeze-thaw cycles.
Storage:	4 °C,-20 °C
Storage Comment:	Long term: -20°C, the use of 50% glycerol is recommended if storing aliquots in -20°C for long term use (up to 1 year)

Handling

Short term (less than 1 week): 4°C. Avoid freeze-thaw cycles.

Images



Immunohistochemistry

Image 1. Human Prostate: Formalin-Fixed, Paraffin-Embedded (FFPE)