



[Go to Product page](#)

Datasheet for ABIN6752984
anti-HECTD2 antibody (AA 684-733)

2 Images

Overview

Quantity:	100 µL
Target:	HECTD2
Binding Specificity:	AA 684-733
Reactivity:	Human, Mouse, Cow, Dog, Guinea Pig, Horse, Rabbit, Bat, Monkey
Host:	Rabbit
Clonality:	Polyclonal
Conjugate:	This HECTD2 antibody is un-conjugated
Application:	Western Blotting (WB), Immunohistochemistry (IHC), Immunohistochemistry (Paraffin-embedded Sections) (IHC (p))

Product Details

Brand:	IHC-plus™
Immunogen:	Synthetic peptide located between aa684-733 of human HECTD2 (Q5RD78, NP_877497). Percent identity by BLAST analysis: Human, Chimpanzee, Gorilla, Orangutan, Gibbon, Monkey, Galago, Marmoset, Mouse, Elephant, Dog, Bovine, Bat, Rabbit, Horse, Opossum, Guinea pig, Zebra finch, Platypus (100%), Turkey, Chicken, Xenopus, Stickleback (92%), Drosophila, Beetle (91%). Type of Immunogen: Synthetic peptide
Isotype:	IgG
Specificity:	Human HECTD2

Product Details

Purification: Immunoaffinity purified

Target Details

Target: HECTD2

Alternative Name: HECTD2 ([HECTD2 Products](#))

Background: Name/Gene ID: HECTD2

Synonyms: HECTD2, HECT domain containing 2

Gene ID: 143279

NCBI Accession: [NP_877497](#)

Application Details

Application Notes: Approved: IHC, IHC-P (10 µg/mL), WB (0.2 - 1 µg/mL)

Usage: ELISA titer using peptide based assay: 1:312500. Western Blot: Suggested dilution at 1 µg/mL in 5 % skim milk / PBS buffer, and HRP conjugated anti-Rabbit IgG should be diluted in 1:50000 - 100000 as second antibody.

Comment: Target Species of Antibody: Human

Restrictions: For Research Use only

Handling

Format: Lyophilized

Reconstitution: Distilled Water.

Concentration: Lot specific

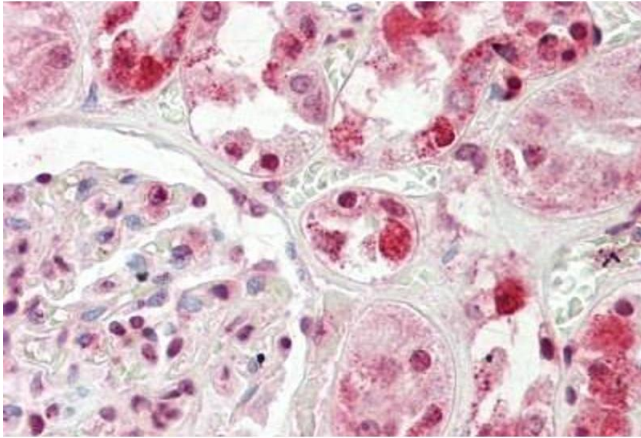
Buffer: Lyophilized from PBS with 2 % sucrose

Handling Advice: Avoid repeat freeze-thaw cycles.

Storage: 4 °C, -20 °C

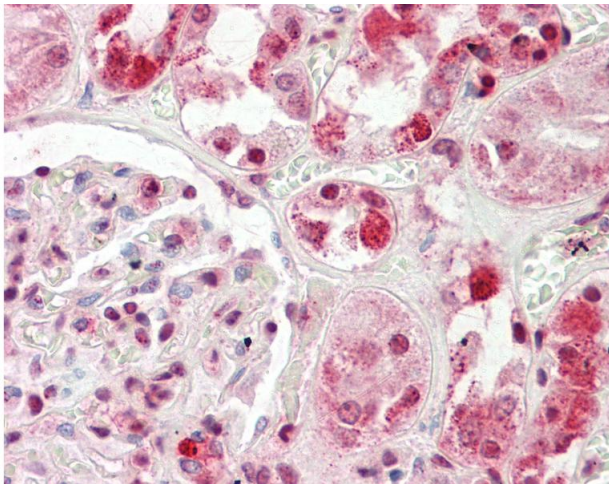
Storage Comment: Long term: -20°C, the use of 50% glycerol is recommended if storing aliquots in -20°C for long term use (up to 1 year)

Short term (less than 1 week): 4°C. Avoid freeze-thaw cycles.



Immunohistochemistry

Image 1. Human Kidney: Formalin-Fixed, Paraffin-Embedded (FFPE)



Immunohistochemistry

Image 2. Anti-HECTD2 antibody IHC staining of human kidney. Immunohistochemistry of formalin-fixed, paraffin-embedded tissue after heat-induced antigen retrieval. Antibody concentration 10 ug/ml. This image was taken for the unconjugated form of this product ...