



[Go to Product page](#)

Datasheet for ABIN6752985  
**anti-DPY19L1 antibody (AA 35-84)**

1 Image

Overview

Quantity:	100 µL
Target:	DPY19L1
Binding Specificity:	AA 35-84
Reactivity:	Human, Mouse, Rat, Cow, Dog, Guinea Pig, Horse, Rabbit, Bat, Chicken, Monkey, Pig, Xenopus laevis
Host:	Rabbit
Clonality:	Polyclonal
Conjugate:	This DPY19L1 antibody is un-conjugated
Application:	Western Blotting (WB), Immunohistochemistry (IHC), Immunohistochemistry (Paraffin-embedded Sections) (IHC (p))

Product Details

Brand:	IHC-plus™
Immunogen:	Synthetic peptide located between aa35-84 of human DPY19L1 (Q2PZ11, NP_056098). Percent identity by BLAST analysis: Human, Chimpanzee, Gorilla, Gibbon, Galago, Marmoset, Mouse, Rat, Dog, Bovine, Bat, Rabbit, Horse, Pig, Guinea pig, Zebra finch, Chicken, Xenopus (100%), Elephant, Stickleback, Zebrafish (92%).  Type of Immunogen: Synthetic peptide
Isotype:	IgG
Specificity:	Human DPY19L1

## Product Details

---

Purification: Immunoaffinity purified

## Target Details

---

Target: DPY19L1

Alternative Name: DPY19L1 ([DPY19L1 Products](#))

Background: Name/Gene ID: DPY19L1

Synonyms: DPY19L1, Dpy-19-like 1 (C. elegans), GA0500, Dpy-19-like protein 1, KIAA0877, Protein dpy-19 homolog 1

Gene ID: 23333

NCBI Accession: [NP\\_056098](#)

Pathways: [SARS-CoV-2 Protein Interactome](#)

## Application Details

---

Application Notes: Approved: IHC, IHC-P (10 µg/mL), WB (0.2 - 1 µg/mL)

Usage: Western Blot: Suggested dilution at 1 µg/mL in 5 % skim milk / PBS buffer, and HRP conjugated anti-Rabbit IgG should be diluted in 1: 50,000 - 100,000 as second antibody. ELISA titer in peptide based assay: 1:1562500.

Comment: Target Species of Antibody: Human

Restrictions: For Research Use only

## Handling

---

Format: Lyophilized

Reconstitution: Distilled water

Concentration: Lot specific

Buffer: Lyophilized from PBS with 2 % sucrose

Handling Advice: Avoid repeat freeze-thaw cycles.

Storage: 4 °C, -20 °C

Storage Comment: Long term: -20°C, the use of 50% glycerol is recommended if storing aliquots in -20°C for long

## Handling

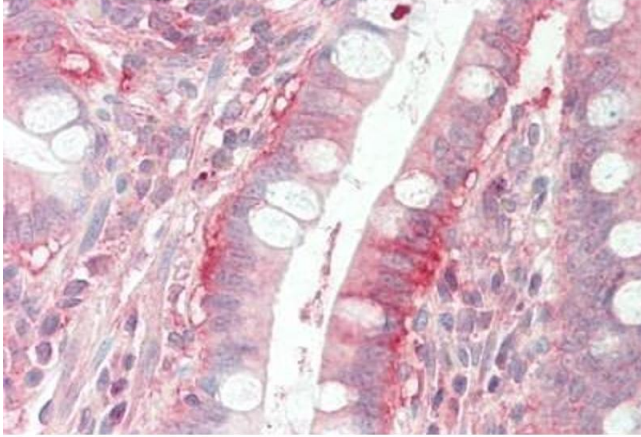
---

term use (up to 1 year)

Short term (less than 1 week): 4°C. Avoid freeze-thaw cycles.

## Images

---



### Immunohistochemistry

**Image 1.** Human Small Intestine: Formalin-Fixed, Paraffin-Embedded (FFPE)