



Datasheet for ABIN6752986
anti-DPY19L1 antibody (AA 633-682)



[Go to Product page](#)

2 Images

Overview

Quantity:	100 µL
Target:	DPY19L1
Binding Specificity:	AA 633-682
Reactivity:	Human, Mouse, Rat, Cow, Dog, Guinea Pig, Horse, Rabbit, Zebrafish (Danio rerio), Bat, Chicken
Host:	Rabbit
Clonality:	Polyclonal
Conjugate:	This DPY19L1 antibody is un-conjugated
Application:	Western Blotting (WB), Immunohistochemistry (IHC), Immunohistochemistry (Paraffin-embedded Sections) (IHC (p))

Product Details

Brand:	IHC-plus™
Immunogen:	Synthetic peptide located between aa633-682 of mouse Dpy19l1 (A6X919, NP_766508). Percent identity by BLAST analysis: Human, Gorilla, Gibbon, Galago, Marmoset, Mouse, Rat, Elephant, Dog, Bovine, Bat, Rabbit, Horse, Opossum, Guinea pig, Zebra finch, Chicken, Platypus, Zebrafish (100%), Monkey, Pig, Stickleback (92%), Xenopus (85%). Type of Immunogen: Synthetic peptide
Specificity:	Mouse DPY19L1
Purification:	Immunoaffinity purified

Target Details

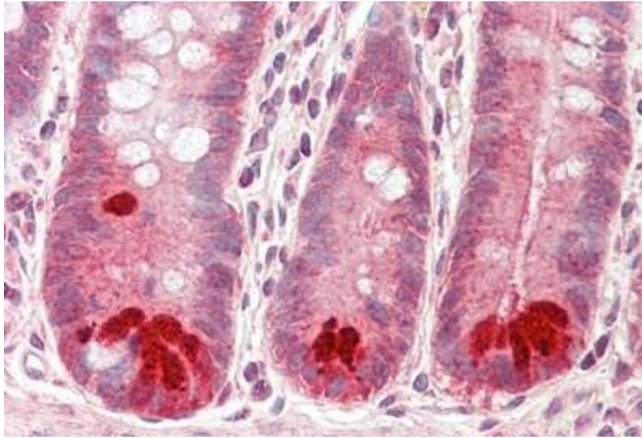
Target:	DPY19L1
Alternative Name:	DPY19L1 (DPY19L1 Products)
Background:	Name/Gene ID: DPY19L1 Synonyms: DPY19L1, Dpy-19-like 1 (C. elegans), GA0500, Dpy-19-like protein 1, KIAA0877, Protein dpy-19 homolog 1
Gene ID:	23333
NCBI Accession:	NP_766508
Pathways:	SARS-CoV-2 Protein Interactome

Application Details

Application Notes:	Approved: IHC, IHC-P (10 µg/mL), WB (1 µg/mL) Usage: Western Blot: Suggested dilution at 1 µg/mL in 5 % skim milk / PBS buffer, and HRP conjugated anti-Rabbit IgG should be diluted in 1: 50,000 - 100,000 as secondary antibody.
Comment:	Target Species of Antibody: Mouse
Restrictions:	For Research Use only

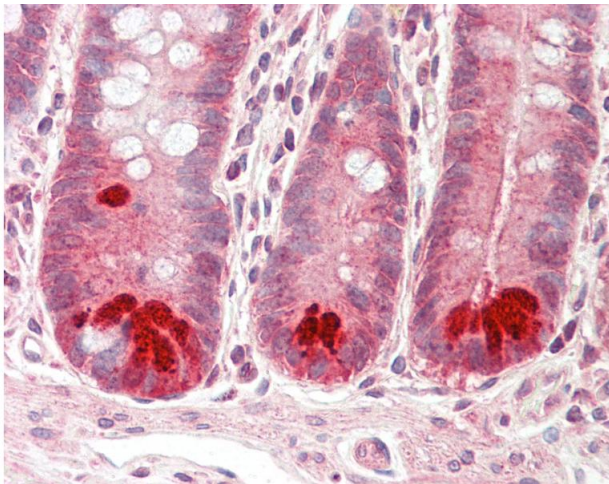
Handling

Format:	Lyophilized
Reconstitution:	Reconstitute with 50 µL sterile ddH ₂ O.
Concentration:	Lot specific
Buffer:	Lyophilized from PBS with 2 % sucrose
Handling Advice:	Avoid repeat freeze-thaw cycles.
Storage:	4 °C, -20 °C
Storage Comment:	Long term: -20°C, the use of 50% glycerol is recommended if storing aliquots in -20°C for long term use (up to 1 year) Short term (less than 1 week): 4°C. Avoid freeze-thaw cycles.



Immunohistochemistry

Image 1. Human Small Intestine: Formalin-Fixed, Paraffin-Embedded (FFPE)



Immunohistochemistry

Image 2. Anti-DPY19L1 antibody IHC staining of human small intestine. Immunohistochemistry of formalin-fixed, paraffin-embedded tissue after heat-induced antigen retrieval. Antibody concentration 10 ug/ml. This image was taken for the unconjugated form of th ...