



Datasheet for ABIN6752988

anti-Calsyntenin 1 antibody (AA 35-84)



[Go to Product page](#)

2 Images

Overview

Quantity:	100 µL
Target:	Calsyntenin 1 (CLSTN1)
Binding Specificity:	AA 35-84
Reactivity:	Human, Mouse, Rat, Rabbit, Zebrafish (Danio rerio), Cow, Guinea Pig, Horse, Bat, Monkey, Pig
Host:	Rabbit
Clonality:	Polyclonal
Conjugate:	This Calsyntenin 1 antibody is un-conjugated
Application:	Western Blotting (WB), Immunohistochemistry (IHC), Immunohistochemistry (Paraffin-embedded Sections) (IHC (p))

Product Details

Brand:	IHC-plus™
Immunogen:	Synthetic peptide located between aa35-84 of human CLSTN1 (O94985, NP_001009566). Percent identity by BLAST analysis: Human, Chimpanzee, Gorilla, Gibbon, Monkey, Marmoset, Mouse, Rat, Bat, Rabbit, Horse, Guinea pig (100%), Galago, Elephant, Dog, Opossum, Turkey, Chicken, Platypus (92%), Xenopus, Stickleback, Zebrafish (84%), Pig (83%). Type of Immunogen: Synthetic peptide
Specificity:	Human CLSTN1
Purification:	Immunoaffinity purified

Target Details

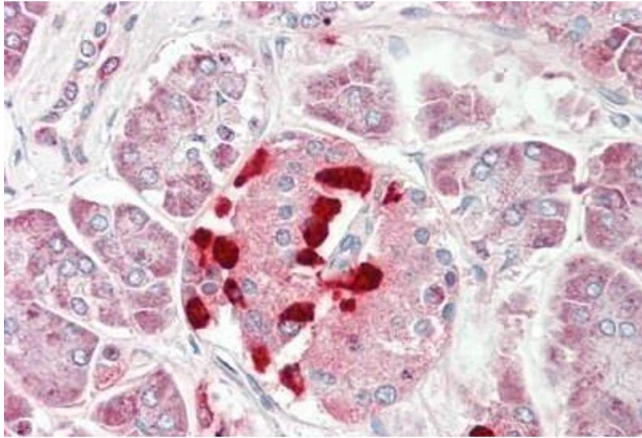
Target:	Calsyntenin 1 (CLSTN1)
Alternative Name:	CS1 / CLSTN1 (CLSTN1 Products)
Background:	Name/Gene ID: CLSTN1 Family: Cadherin Synonyms: CLSTN1, Alcadein-alpha, Alcadein alpha 1, Alcalpha2, Alcalpha1, CS1, CSTN1, CDHR12, ALC-ALPHA, XB31alpha, Calsyntenin 1, Calsyntenin-1, KIAA0911
Gene ID:	22883
NCBI Accession:	NP_001009566

Application Details

Application Notes:	Approved: IHC, IHC-P (10 µg/mL), WB (0.2 - 1 µg/mL) Usage: Western Blot: Suggested dilution at 1 µg/mL in 5 % skim milk / PBS buffer, and HRP conjugated anti-Rabbit IgG should be diluted in 1: 50,000 - 100,000 as secondary antibody.
Comment:	Target Species of Antibody: Human
Restrictions:	For Research Use only

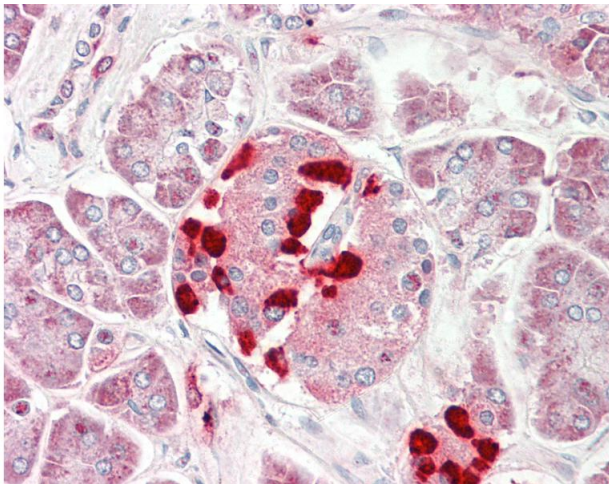
Handling

Format:	Lyophilized
Reconstitution:	Distilled water
Concentration:	Lot specific
Buffer:	Lyophilized from PBS with 2 % sucrose
Handling Advice:	Avoid repeat freeze-thaw cycles.
Storage:	4 °C, -20 °C
Storage Comment:	Long term: -20°C, the use of 50% glycerol is recommended if storing aliquots in -20°C for long term use (up to 1 year) Short term (less than 1 week): 4°C. Avoid freeze-thaw cycles.



Immunohistochemistry

Image 1. Human Pancreas: Formalin-Fixed, Paraffin-Embedded (FFPE)



Immunohistochemistry

Image 2. Anti-CS1 / CLSTN1 antibody IHC staining of human pancreas. Immunohistochemistry of formalin-fixed, paraffin-embedded tissue after heat-induced antigen retrieval. Antibody concentration 10 ug/ml. This image was taken for the unconjugated form of this ...