



[Go to Product page](#)

Datasheet for ABIN6752989

## anti-CUTA antibody (AA 71-120)

### 2 Images

#### Overview

Quantity:	100 µL
Target:	CUTA
Binding Specificity:	AA 71-120
Reactivity:	Human, Mouse, Rat, Cow, Rabbit, Dog, Guinea Pig, Horse, Pig, Bat, Monkey
Host:	Rabbit
Clonality:	Polyclonal
Conjugate:	This CUTA antibody is un-conjugated
Application:	Western Blotting (WB), Immunohistochemistry (IHC), Immunohistochemistry (Paraffin-embedded Sections) (IHC (p))

#### Product Details

Brand:	IHC-plus™
Immunogen:	Synthetic peptide located between aa71-120 of human CUTA (O60888, NP_001014840). Percent identity by BLAST analysis: Human, Gorilla, Monkey, Marmoset, Mouse, Rat, Elephant, Panda, Dog, Bovine, Bat, Rabbit, Horse, Pig, Guinea pig (100%), Hamster (92%), Frog (83%).  Type of Immunogen: Synthetic peptide
Specificity:	Human CUTA
Purification:	Immunoaffinity purified

## Target Details

---

Target:	CUTA
Alternative Name:	CUTA ( <a href="#">CUTA Products</a> )
Background:	Name/Gene ID: CUTA  Synonyms: CUTA, ACHAP, C6orf82, Protein CutA
Gene ID:	51596
NCBI Accession:	<a href="#">NP_001014840</a>

## Application Details

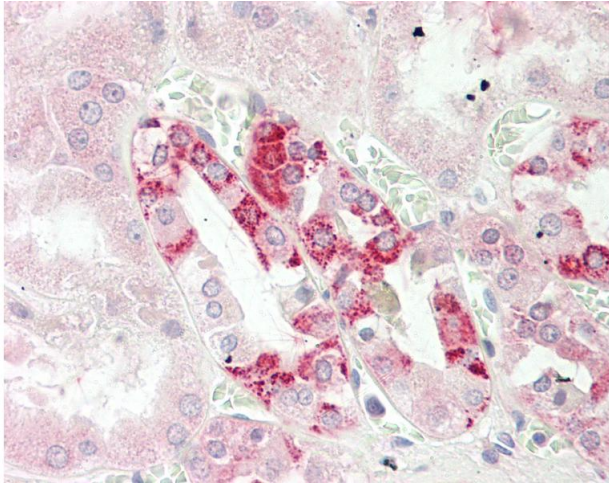
---

Application Notes:	Approved: IHC, IHC-P (10 µg/mL), WB (0.2 - 1 µg/mL)  Usage: Western Blot: Suggested dilution at 1 µg/mL in 5 % skim milk / PBS buffer, and HRP conjugated anti-Rabbit IgG should be diluted in 1: 50,000 - 100,000 as secondary antibody.
Comment:	Target Species of Antibody: Human
Restrictions:	For Research Use only

## Handling

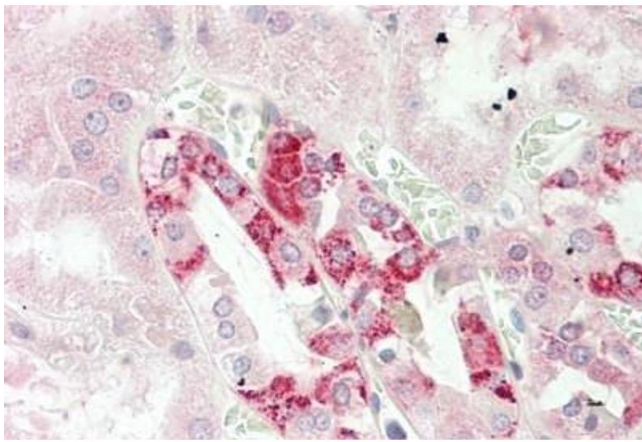
---

Format:	Lyophilized
Reconstitution:	Distilled water
Concentration:	Lot specific
Buffer:	Lyophilized from PBS with 2 % sucrose
Handling Advice:	Avoid repeat freeze-thaw cycles.
Storage:	4 °C,-20 °C
Storage Comment:	Long term: -20°C, the use of 50% glycerol is recommended if storing aliquots in -20°C for long term use (up to 1 year)  Short term (less than 1 week): 4°C. Avoid freeze-thaw cycles.



#### Immunohistochemistry

**Image 1.** Anti-CUTA antibody IHC staining of human kidney. Immunohistochemistry of formalin-fixed, paraffin-embedded tissue after heat-induced antigen retrieval. Antibody concentration 10 ug/ml. This image was taken for the unconjugated form of this product. ...



#### Immunohistochemistry

**Image 2.** Human Kidney: Formalin-Fixed, Paraffin-Embedded (FFPE)