

Datasheet for ABIN6752991
anti-TAPBP antibody (AA 307-356)

2 Images

[Go to Product page](#)

Overview

Quantity:	100 µL
Target:	TAPBP
Binding Specificity:	AA 307-356
Reactivity:	Human, Sheep, Cow, Pig
Host:	Rabbit
Clonality:	Polyclonal
Conjugate:	This TAPBP antibody is un-conjugated
Application:	Western Blotting (WB), Immunohistochemistry (IHC), Immunohistochemistry (Paraffin-embedded Sections) (IHC (p))

Product Details

Brand:	IHC-plus™
Immunogen:	Synthetic peptide located between aa307-356 of human TAPBP (O15533, NP_003181). Percent identity by BLAST analysis: Human, Chimpanzee, Gorilla, Monkey (100%), Marmoset (92%), Sheep, Bovine, Pig (85%). Type of Immunogen: Synthetic peptide
Isotype:	IgG
Specificity:	Human TAPBP / Tapasin
Purification:	Immunoaffinity purified

Target Details

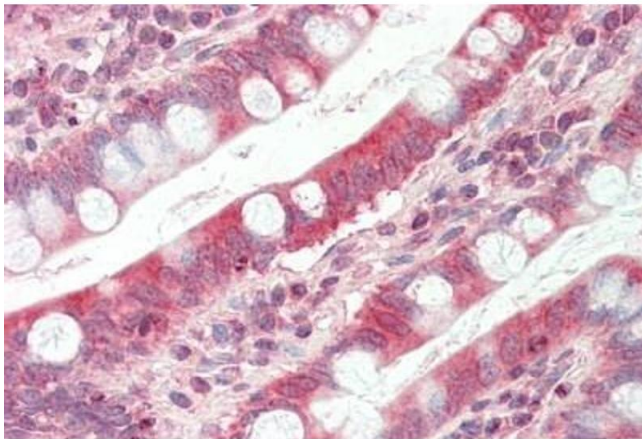
Target:	TAPBP
Alternative Name:	TAPBP / Tapasin (TAPBP Products)
Background:	Name/Gene ID: TAPBP Synonyms: TAPBP, TAP binding protein (tapasin), TAPA, TAP-associated protein, TAP-binding protein, TPN, NGS17, NGS-17, Tapasin, TPSN
Gene ID:	6892
NCBI Accession:	NP_003181

Application Details

Application Notes:	Approved: IHC, IHC-P (10 µg/mL), WB (0.5 µg/mL) Usage: ELISA titer using peptide based assay: 1:12500. Western Blot: Suggested dilution at 0.5 µg/mL in 5 % skim milk / PBS buffer, and HRP conjugated anti-Rabbit IgG should be diluted in 1:50000 - 100000 as second antibody.
Comment:	Target Species of Antibody: Human
Restrictions:	For Research Use only

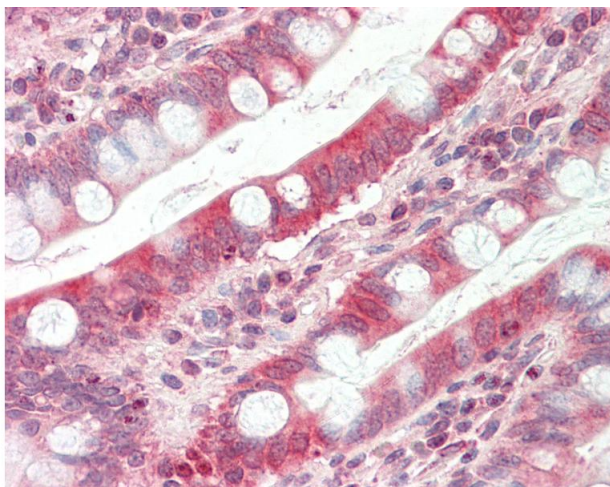
Handling

Format:	Lyophilized
Reconstitution:	Distilled water
Concentration:	Lot specific
Buffer:	Lyophilized from PBS with 2 % sucrose
Handling Advice:	Avoid repeat freeze-thaw cycles.
Storage:	4 °C, -20 °C
Storage Comment:	Long term: -20°C, the use of 50% glycerol is recommended if storing aliquots in -20°C for long term use (up to 1 year) Short term (less than 1 week): 4°C. Avoid freeze-thaw cycles.



Immunohistochemistry

Image 1. Human Small Intestine: Formalin-Fixed, Paraffin-Embedded (FFPE)



Immunohistochemistry

Image 2. Anti-TAPBP / Tapasin antibody IHC staining of human small intestine. Immunohistochemistry of formalin-fixed, paraffin-embedded tissue after heat-induced antigen retrieval. Antibody concentration 10 ug/ml. This image was taken for the unconjugated fo ...