

Datasheet for ABIN6753000
anti-PYCR1 antibody (AA 215-264)

2 Images

[Go to Product page](#)

Overview

Quantity:	100 µL
Target:	PYCR1
Binding Specificity:	AA 215-264
Reactivity:	Human, Rat, Zebrafish (Danio rerio), Rabbit, Cow, Dog, Guinea Pig, Horse, Monkey, Chicken, Pig, Xenopus laevis
Host:	Rabbit
Clonality:	Polyclonal
Conjugate:	This PYCR1 antibody is un-conjugated
Application:	Western Blotting (WB), Immunohistochemistry (IHC), Immunohistochemistry (Paraffin-embedded Sections) (IHC (p))

Product Details

Brand:	IHC-plus™
Immunogen:	<p>Synthetic peptide located between aa215-264 of human PYCR1 (A6NFM2, NP_722546).</p> <p>Percent identity by BLAST analysis: Human, Chimpanzee, Gorilla, Orangutan, Gibbon, Monkey, Marmoset, Rat, Dog, Bovine, Rabbit, Horse, Pig, Opossum, Guinea pig, Zebra finch, Chicken, Xenopus, Zebrafish (100%), Galago, Mouse, Hamster, Elephant, Smelt (91%), Drosophila (83%).</p> <p>Type of Immunogen: Synthetic peptide</p>
Specificity:	Human PYCR1
Purification:	Immunoaffinity purified

Target Details

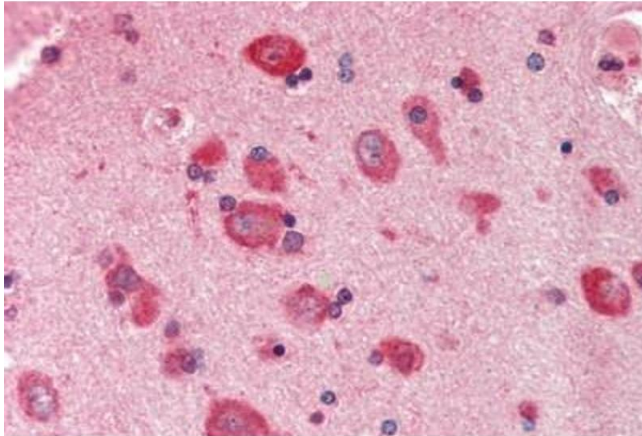
Target:	PYCR1
Alternative Name:	PYCR1 (PYCR1 Products)
Background:	Name/Gene ID: PYCR1 Synonyms: PYCR1, ARCL2B, ARCL3B, p5CR, p5CR 1, PIG45, p5C reductase 1, PP222, p5C, PRO3, PYCR
Gene ID:	5831
NCBI Accession:	NP_722546

Application Details

Application Notes:	Approved: IHC, IHC-P (10 µg/mL), WB (0.2 - 1 µg/mL) Usage: Western Blot: Suggested dilution at 1 µg/mL in 5 % skim milk / PBS buffer, and HRP conjugated anti-Rabbit IgG should be diluted in 1: 50,000 - 100,000 as secondary antibody.
Comment:	Target Species of Antibody: Human
Restrictions:	For Research Use only

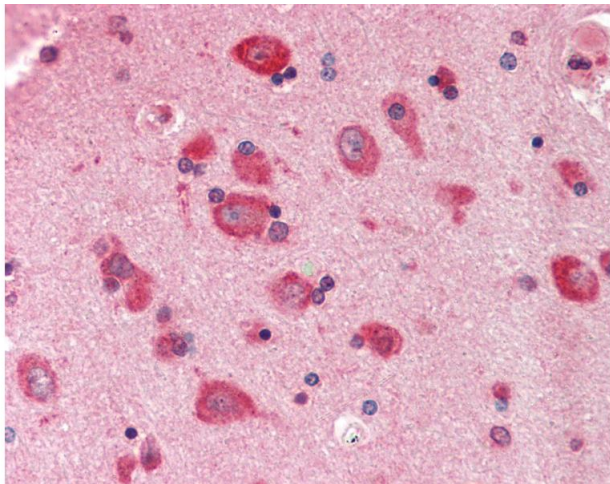
Handling

Format:	Lyophilized
Reconstitution:	Distilled water
Concentration:	Lot specific
Buffer:	Lyophilized from PBS with 2 % sucrose
Handling Advice:	Avoid repeat freeze-thaw cycles.
Storage:	4 °C, -20 °C
Storage Comment:	Long term: -20°C, the use of 50% glycerol is recommended if storing aliquots in -20°C for long term use (up to 1 year) Short term (less than 1 week): 4°C. Avoid freeze-thaw cycles.



Immunohistochemistry

Image 1. Human Brain, Cortex: Formalin-Fixed, Paraffin-Embedded (FFPE)



Immunohistochemistry

Image 2. Anti-PYCR1 antibody IHC staining of human brain, cortex. Immunohistochemistry of formalin-fixed, paraffin-embedded tissue after heat-induced antigen retrieval. Antibody concentration 10 ug/ml. This image was taken for the unconjugated form of this p ...