

Datasheet for ABIN6753001  
**anti-CDCA5 antibody (AA 110-159)**

## 2 Images

[Go to Product page](#)

## Overview

Quantity:	100 µL
Target:	CDCA5
Binding Specificity:	AA 110-159
Reactivity:	Human
Host:	Rabbit
Clonality:	Polyclonal
Conjugate:	This CDCA5 antibody is un-conjugated
Application:	Western Blotting (WB), Immunohistochemistry (IHC), Immunohistochemistry (Paraffin-embedded Sections) (IHC (p))

## Product Details

Brand:	IHC-plus™
Immunogen:	Synthetic peptide located between aa110-159 of human CDCA5 (Q96FF9, NP_542399). Percent identity by BLAST analysis: Human (100%), Gorilla, Gibbon (92%), Monkey (85%).  Type of Immunogen: Synthetic peptide
Isotype:	IgG
Specificity:	Human CDCA5 / Sororin
Purification:	Immunoaffinity purified

## Target Details

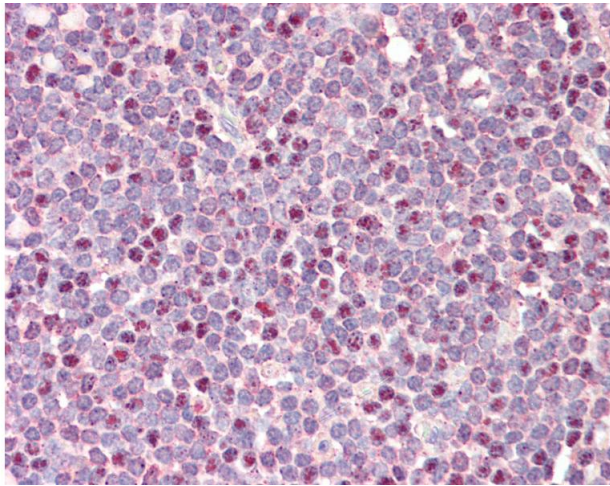
Target:	CDCA5
Alternative Name:	CDCA5 / Sororin ( <a href="#">CDCA5 Products</a> )
Background:	Name/Gene ID: CDCA5  Synonyms: CDCA5, p35, Sororin
Gene ID:	113130
NCBI Accession:	<a href="#">NP_542399</a>
Pathways:	<a href="#">Chromatin Binding</a>

## Application Details

Application Notes:	Approved: IHC, IHC-P (10 µg/mL), WB (0.2 - 1 µg/mL)  Usage: ELISA titer using peptide based assay: 1:1562500. Western Blot: Suggested dilution at 1 µg/mL in 5 % skim milk / PBS buffer, and HRP conjugated anti-Rabbit IgG should be diluted in 1:50000 - 100000 as second antibody.
Comment:	Target Species of Antibody: Human
Restrictions:	For Research Use only

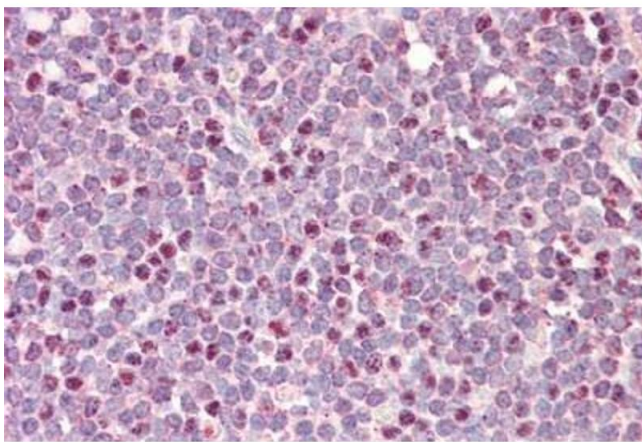
## Handling

Format:	Lyophilized
Reconstitution:	Distilled Water.
Concentration:	Lot specific
Buffer:	Lyophilized from PBS with 2 % sucrose
Handling Advice:	Avoid repeat freeze-thaw cycles.
Storage:	4 °C, -20 °C
Storage Comment:	Long term: -20°C, the use of 50% glycerol is recommended if storing aliquots in -20°C for long term use (up to 1 year)  Short term (less than 1 week): 4°C. Avoid freeze-thaw cycles.



#### Immunohistochemistry

**Image 1.** Anti-CDCA5 / Sororin antibody IHC staining of human tonsil. Immunohistochemistry of formalin-fixed, paraffin-embedded tissue after heat-induced antigen retrieval. Antibody concentration 10 ug/ml. This image was taken for the unconjugated form of thi ...



#### Immunohistochemistry

**Image 2.** Human Tonsil: Formalin-Fixed, Paraffin-Embedded (FFPE)