



[Go to Product page](#)

Datasheet for ABIN6753004  
**anti-ROPN1L antibody (C-Term)**

2 Images

### Overview

Quantity:	100 µL
Target:	ROPN1L
Binding Specificity:	C-Term
Reactivity:	Human
Host:	Rabbit
Clonality:	Polyclonal
Conjugate:	This ROPN1L antibody is un-conjugated
Application:	Western Blotting (WB), Immunohistochemistry (IHC), Immunohistochemistry (Paraffin-embedded Sections) (IHC (p))

### Product Details

Brand:	IHC-plus™
Immunogen:	Synthetic peptide from C-Terminus of human ROPN1L (Q96C74, NP_114122). Percent identity by BLAST analysis: Human (100%), Gorilla (92%), Monkey (84%).  Type of Immunogen: Synthetic peptide
Specificity:	Human ROPN1L
Purification:	Immunoaffinity purified

### Target Details

Target:	ROPN1L
---------	--------

## Target Details

---

Alternative Name: [ROPN1L \(ROPN1L Products\)](#)

Background: Name/Gene ID: ROPN1L

Synonyms: ROPN1L, AKAP-associated sperm protein, ROPN1-like protein, Ropporin-1-like protein, RSPH11, ASP, Radial spoke head 11 homolog, Ropporin 1-like

Gene ID: 83853

NCBI Accession: [NP\\_114122](#)

## Application Details

---

Application Notes: Approved: IHC, IHC-P (5 µg/mL), WB (0.2 - 1 µg/mL)

Usage: Western Blot: Suggested dilution at 1 µg/mL in 5 % skim milk / PBS buffer, and HRP conjugated anti-Rabbit IgG should be diluted in 1: 50,000 - 100,000 as secondary antibody.

Comment: Target Species of Antibody: Human

Restrictions: For Research Use only

## Handling

---

Format: Lyophilized

Reconstitution: Distilled water

Concentration: Lot specific

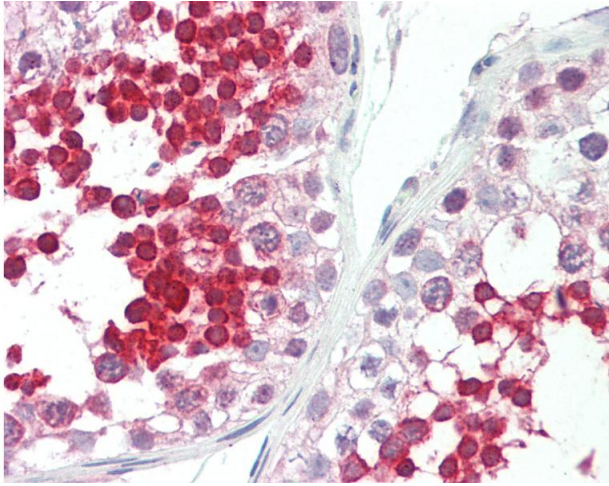
Buffer: Lyophilized from PBS with 2 % sucrose

Handling Advice: Avoid repeat freeze-thaw cycles.

Storage: 4 °C, -20 °C

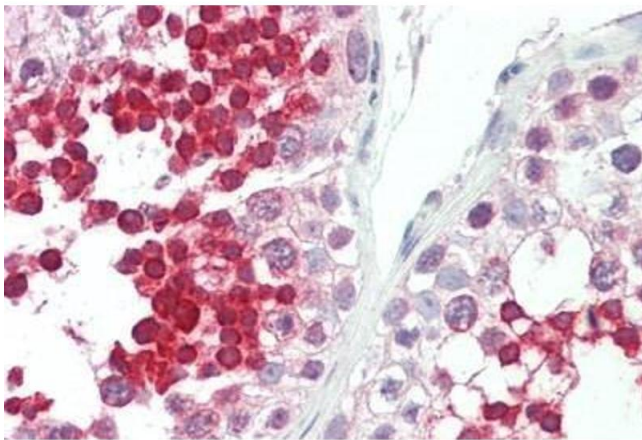
Storage Comment: Long term: -20°C, the use of 50% glycerol is recommended if storing aliquots in -20°C for long term use (up to 1 year)

Short term (less than 1 week): 4°C. Avoid freeze-thaw cycles.



#### Immunohistochemistry

**Image 1.** Anti-ROPN1L antibody IHC staining of human testis. Immunohistochemistry of formalin-fixed, paraffin-embedded tissue after heat-induced antigen retrieval. Antibody concentration 5 ug/ml. This image was taken for the unconjugated form of this product. ...



#### Immunohistochemistry

**Image 2.** Human Testis: Formalin-Fixed, Paraffin-Embedded (FFPE)