

Datasheet for ABIN6753010
anti-LRRK1 antibody (AA 474-523)



[Go to Product page](#)

2 Images

Overview

Quantity:	100 µL
Target:	LRRK1
Binding Specificity:	AA 474-523
Reactivity:	Human, Mouse, Rat, Horse, Rabbit, Guinea Pig, Monkey
Host:	Rabbit
Clonality:	Polyclonal
Conjugate:	This LRRK1 antibody is un-conjugated
Application:	Western Blotting (WB), Immunohistochemistry (IHC), Immunohistochemistry (Paraffin-embedded Sections) (IHC (p))

Product Details

Brand:	IHC-plus™
Immunogen:	Synthetic peptide located between aa474-523 of human LRRK1 (Q38SD2, NP_078928). Percent identity by BLAST analysis: Human, Chimpanzee, Gorilla, Gibbon, Monkey, Marmoset, Mouse, Rat, Rabbit, Horse (100%), Elephant, Bat, Opossum (92%), Bovine (91%), Guinea pig (85%). Type of Immunogen: Synthetic peptide
Specificity:	Human LRRK1
Purification:	Immunoaffinity purified

Target Details

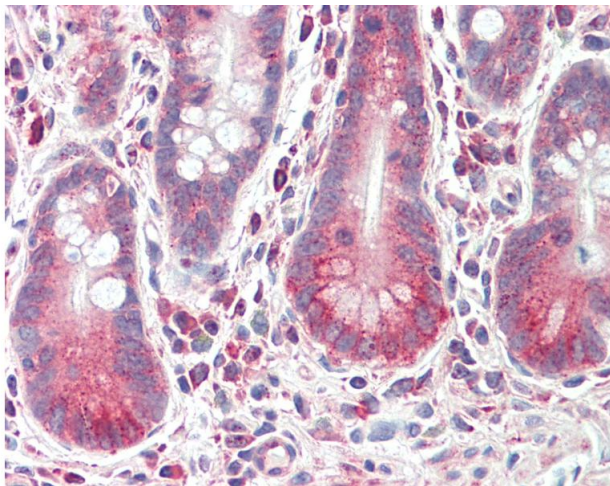
Target:	LRRK1
Alternative Name:	LRRK1 (LRRK1 Products)
Background:	Name/Gene ID: LRRK1 Subfamily: LRRK Family: Protein kinase Synonyms: LRRK1, KIAA1790, Leucine-rich repeat kinase 1, Roco1, RIPK6
Gene ID:	79705
NCBI Accession:	NP_078928

Application Details

Application Notes:	Approved: IHC, IHC-P (10 µg/mL), WB (1 µg/mL)
Comment:	Target Species of Antibody: Human
Restrictions:	For Research Use only

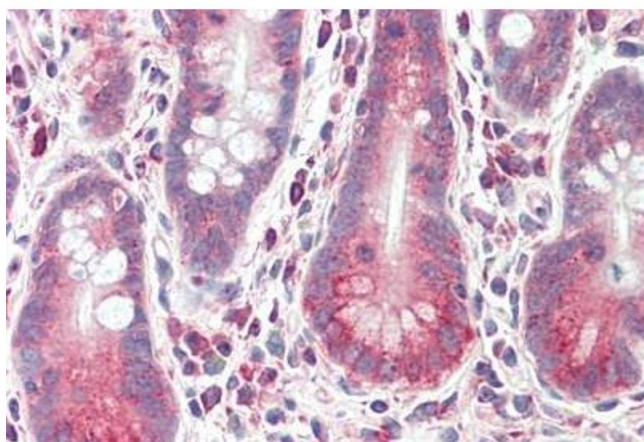
Handling

Format:	Lyophilized
Reconstitution:	Distilled water
Concentration:	Lot specific
Buffer:	Lyophilized from PBS with 2 % sucrose
Handling Advice:	Avoid repeat freeze-thaw cycles.
Storage:	4 °C, -20 °C
Storage Comment:	Long term: -20°C, the use of 50% glycerol is recommended if storing aliquots in -20°C for long term use (up to 1 year) Short term (less than 1 week): 4°C. Avoid freeze-thaw cycles.



Immunohistochemistry

Image 1. Anti-LRRK1 antibody IHC staining of human small intestine. Immunohistochemistry of formalin-fixed, paraffin-embedded tissue after heat-induced antigen retrieval. Antibody concentration 10 ug/ml. This image was taken for the unconjugated form of this ...



Immunohistochemistry

Image 2. Human Small Intestine: Formalin-Fixed, Paraffin-Embedded (FFPE)