



[Go to Product page](#)

Datasheet for ABIN6753011
anti-ATAD2 antibody (AA 1205-1254)

1 Image

Overview

Quantity:	100 µL
Target:	ATAD2
Binding Specificity:	AA 1205-1254
Reactivity:	Human, Pig, Rabbit
Host:	Rabbit
Clonality:	Polyclonal
Conjugate:	This ATAD2 antibody is un-conjugated
Application:	Western Blotting (WB), Immunohistochemistry (Paraffin-embedded Sections) (IHC (p)), Immunohistochemistry (IHC)

Product Details

Brand:	IHC-plus™
Immunogen:	Synthetic peptide located between aa1205-1254 of human ATAD2 (Q6PL18, NP_054828). Percent identity by BLAST analysis: Human, Chimpanzee, Gorilla, Gibbon, Monkey (100%), Galago, Marmoset, Dog, Horse (92%), Rabbit, Pig, Opossum (85%). Type of Immunogen: Synthetic peptide
Specificity:	Human ATAD2
Purification:	Immunoaffinity purified

Target Details

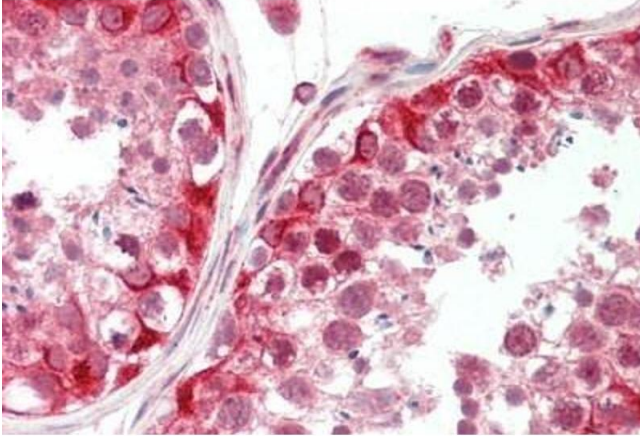
Target:	ATAD2
Alternative Name:	ATAD2 (ATAD2 Products)
Background:	Name/Gene ID: ATAD2 Synonyms: ATAD2, PRO2000, ANCCA
Gene ID:	29028
NCBI Accession:	NP_054828

Application Details

Application Notes:	Approved: IHC, IHC-P (5 µg/mL), WB (1 µg/mL)
Comment:	Target Species of Antibody: Human
Restrictions:	For Research Use only

Handling

Format:	Lyophilized
Reconstitution:	Reconstitute with 50 µL sterile ddH ₂ O.
Concentration:	Lot specific
Buffer:	Lyophilized from PBS with 2 % sucrose
Handling Advice:	Avoid repeat freeze-thaw cycles.
Storage:	4 °C,-20 °C
Storage Comment:	Long term: -20°C, the use of 50% glycerol is recommended if storing aliquots in -20°C for long term use (up to 1 year) Short term (less than 1 week): 4°C. Avoid freeze-thaw cycles.



Immunohistochemistry

Image 1. Human Testis: Formalin-Fixed, Paraffin-Embedded (FFPE)