



[Go to Product page](#)

Datasheet for ABIN6754879

anti-SPDEF/PSE antibody (AA 182-231)

2 Images

Overview

Quantity:	100 µL
Target:	SPDEF/PSE (SPDEF)
Binding Specificity:	AA 182-231
Reactivity:	Human, Cow, Rabbit, Dog, Guinea Pig, Pig, Monkey
Host:	Rabbit
Clonality:	Polyclonal
Conjugate:	This SPDEF/PSE antibody is un-conjugated
Application:	Western Blotting (WB), Immunohistochemistry (IHC), Immunohistochemistry (Paraffin-embedded Sections) (IHC (p))

Product Details

Brand:	IHC-plus™
Immunogen:	Synthetic peptide located between aa182-231 of human SPDEF (O95238, NP_036523). Percent identity by BLAST analysis: Human, Chimpanzee, Gorilla, Gibbon, Monkey, Marmoset, Panda, Dog, Bovine, Rabbit, Pig, Guinea pig (100%), Galago, Mouse, Rat, Hamster, Bat, Horse, Platypus (92%), Elephant, Opossum, Chicken, Lizard (85%). Type of Immunogen: Synthetic peptide
Isotype:	IgG
Specificity:	Human SPDEF
Purification:	Immunoaffinity purified

Target Details

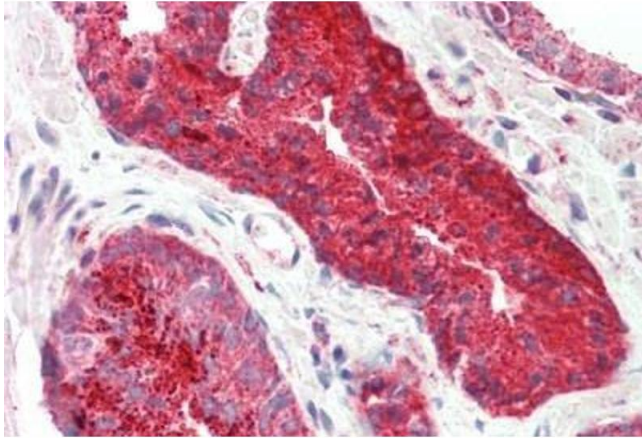
Target:	SPDEF/PSE (SPDEF)
Alternative Name:	PDEF / SPDEF (SPDEF Products)
Background:	Name/Gene ID: SPDEF Subfamily: ETS Family: Transcription factor Synonyms: SPDEF, BA375E1.3, PDEF, RP11-375E1__A.3, Prostate-derived Ets factor, Prostate-specific Ets, PSE
Gene ID:	25803
NCBI Accession:	NP_036523

Application Details

Application Notes:	Approved: IHC, IHC-P (10 µg/mL), WB Usage: ELISA titer using peptide based assay: 1:312500. Western Blot: Suggested dilution at 1 µg/mL in 5 % skim milk / PBS buffer, and HRP conjugated anti-Rabbit IgG should be diluted in 1:50000 - 100000 as second antibody.
Comment:	Target Species of Antibody: Human
Restrictions:	For Research Use only

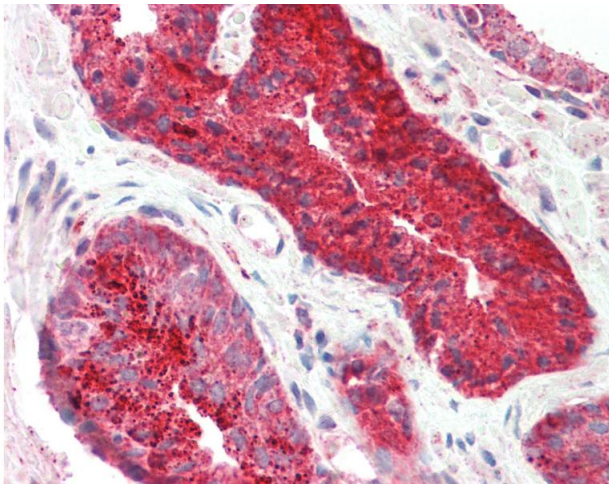
Handling

Format:	Lyophilized
Reconstitution:	Distilled Water.
Concentration:	Lot specific
Buffer:	Lyophilized from PBS with 2 % sucrose
Handling Advice:	Avoid repeat freeze-thaw cycles.
Storage:	4 °C,-20 °C
Storage Comment:	Long term: -20°C, the use of 50% glycerol is recommended if storing aliquots in -20°C for long term use (up to 1 year) Short term (less than 1 week): 4°C. Avoid freeze-thaw cycles.



Immunohistochemistry

Image 1. Human Prostate: Formalin-Fixed, Paraffin-Embedded (FFPE)



Immunohistochemistry

Image 2. Anti-PDEF / SPDEF antibody IHC staining of human prostate. Immunohistochemistry of formalin-fixed, paraffin-embedded tissue after heat-induced antigen retrieval. Antibody concentration 10 ug/ml. This image was taken for the unconjugated form of this ...