

Datasheet for ABIN6754880
anti-Sp2 antibody (AA 180-229)

2 Images

[Go to Product page](#)

Overview

Quantity:	100 µL
Target:	Sp2
Binding Specificity:	AA 180-229
Reactivity:	Human, Rat, Pig, Cow, Monkey, Bat
Host:	Rabbit
Clonality:	Polyclonal
Conjugate:	This Sp2 antibody is un-conjugated
Application:	Western Blotting (WB), Immunohistochemistry (IHC), Immunohistochemistry (Paraffin-embedded Sections) (IHC (p))

Product Details

Brand:	IHC-plus™
Immunogen:	Synthetic peptide located between aa180-229 of human SP2 (Q02086, NP_003101). Percent identity by BLAST analysis: Human, Chimpanzee, Gorilla, Gibbon, Monkey, Marmoset, Bat (100%), Galago, Mouse, Elephant, Dog, Horse (92%), Rat, Bovine, Pig (84%). Type of Immunogen: Synthetic peptide
Specificity:	Human SP2
Purification:	Immunoaffinity purified

Target Details

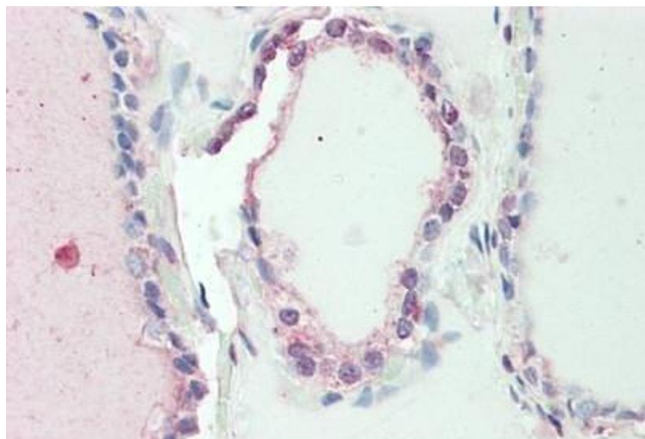
Target:	Sp2
Alternative Name:	SP2 (Sp2 Products)
Background:	Name/Gene ID: SP2 Synonyms: SP2, KIAA0048, Sp2 transcription factor, Transcription factor Sp2
Gene ID:	6668
NCBI Accession:	NP_003101

Application Details

Application Notes:	Approved: IHC, IHC-P (10 µg/mL), WB (0.2 - 1 µg/mL) Usage: Western Blot: Suggested dilution at 1 µg/mL in 5 % skim milk / PBS buffer, and HRP conjugated anti-Rabbit IgG should be diluted in 1: 50,000 - 100,000 as secondary antibody.
Comment:	Target Species of Antibody: Human
Restrictions:	For Research Use only

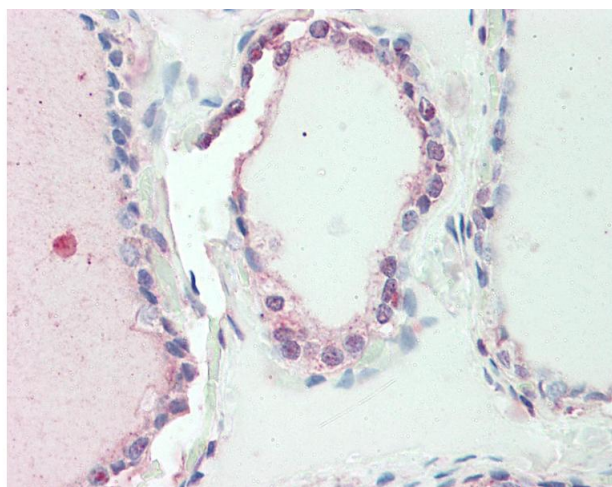
Handling

Format:	Lyophilized
Reconstitution:	Distilled water
Concentration:	Lot specific
Buffer:	Lyophilized from PBS with 2 % sucrose
Handling Advice:	Avoid repeat freeze-thaw cycles.
Storage:	4 °C,-20 °C
Storage Comment:	Long term: -20°C, the use of 50% glycerol is recommended if storing aliquots in -20°C for long term use (up to 1 year) Short term (less than 1 week): 4°C. Avoid freeze-thaw cycles.



Immunohistochemistry

Image 1. Human Thyroid: Formalin-Fixed, Paraffin-Embedded (FFPE)



Immunohistochemistry

Image 2. Anti-SP2 antibody IHC staining of human thyroid. Immunohistochemistry of formalin-fixed, paraffin-embedded tissue after heat-induced antigen retrieval. Antibody concentration 10 ug/ml. This image was taken for the unconjugated form of this product. ...