



[Go to Product page](#)

Datasheet for ABIN6754883

anti-Splicing Factor 1 antibody (AA 65-114)

2 Images

Overview

Quantity:	100 µL
Target:	Splicing Factor 1 (SF1)
Binding Specificity:	AA 65-114
Reactivity:	Human, Mouse, Rat, Dog, Rabbit, Cow, Horse, Guinea Pig, Zebrafish (Danio rerio), Monkey, Bat, Pig, Xenopus laevis
Host:	Rabbit
Clonality:	Polyclonal
Conjugate:	This Splicing Factor 1 antibody is un-conjugated
Application:	Western Blotting (WB), Immunohistochemistry (IHC), Immunohistochemistry (Paraffin-embedded Sections) (IHC (p))

Product Details

Brand:	IHC-plus™
Immunogen:	Synthetic peptide located between aa65-114 of human SF1 (Q15637, NP_004621). Percent identity by BLAST analysis: Human, Chimpanzee, Gorilla, Gibbon, Baboon, Monkey, Galago, Marmoset, Mouse, Rat, Shrew, Elephant, Dog, Bovine, Bat, Rabbit, Horse, Pig, Guinea pig, Armadillo, Platypus, Xenopus, Stickleback, Zebrafish (100%), Drosophila (84%). Type of Immunogen: Synthetic peptide
Specificity:	Human SF1
Purification:	Immunoaffinity purified

Target Details

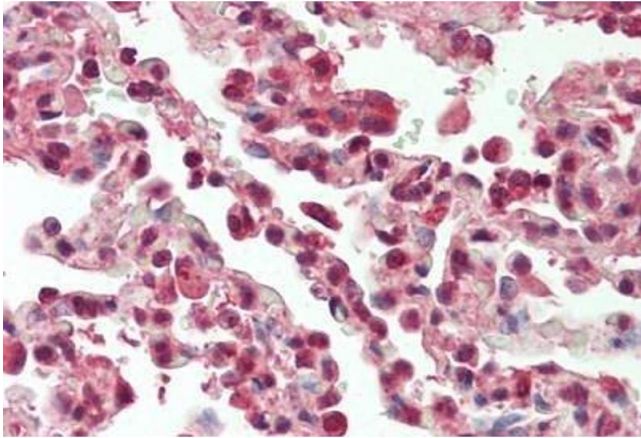
Target:	Splicing Factor 1 (SF1)
Alternative Name:	SF1 (SF1 Products)
Background:	Name/Gene ID: SF1 Synonyms: SF1, D11S636, MBBP, ZCCHC25, Transcription factor ZFM1, Zinc finger gene in MEN1 locus, Zinc finger protein 162, BBP, ZNF162, Splicing factor 1, ZFM1
Gene ID:	7536
NCBI Accession:	NP_004621
Pathways:	Nuclear Receptor Transcription Pathway , Steroid Hormone Mediated Signaling Pathway , Ribonucleoprotein Complex Subunit Organization , Maintenance of Protein Location

Application Details

Application Notes:	Approved: IHC, IHC-P (10 µg/mL), WB (1 µg/mL) Usage: Western Blot: Suggested dilution at 1 µg/mL in 5 % skim milk / PBS buffer, and HRP conjugated anti-Rabbit IgG should be diluted in 1: 50,000 - 100,000 as secondary antibody.
Comment:	Target Species of Antibody: Human
Restrictions:	For Research Use only

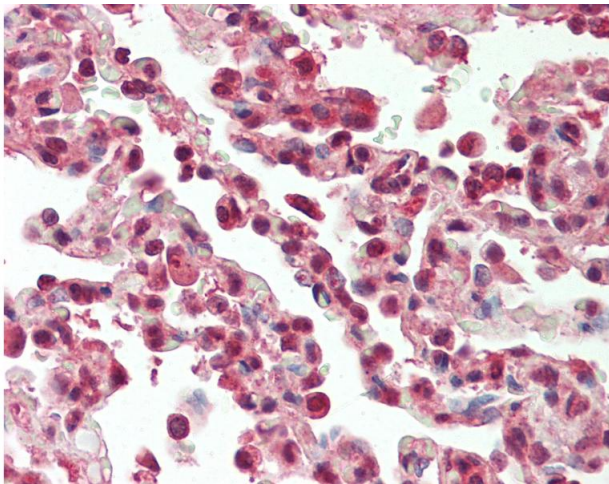
Handling

Format:	Lyophilized
Reconstitution:	Distilled water
Concentration:	Lot specific
Buffer:	Lyophilized from PBS with 2 % sucrose
Handling Advice:	Avoid repeat freeze-thaw cycles.
Storage:	4 °C,-20 °C
Storage Comment:	Long term: -20°C, the use of 50% glycerol is recommended if storing aliquots in -20°C for long term use (up to 1 year) Short term (less than 1 week): 4°C. Avoid freeze-thaw cycles.



Immunohistochemistry

Image 1. Human Lung: Formalin-Fixed, Paraffin-Embedded (FFPE)



Immunohistochemistry

Image 2. Anti-SF1 antibody IHC staining of human lung. Immunohistochemistry of formalin-fixed, paraffin-embedded tissue after heat-induced antigen retrieval. Antibody concentration 10 ug/ml. This image was taken for the unconjugated form of this product. Oth ...