



[Go to Product page](#)

Datasheet for ABIN6754886
anti-c-Rel antibody (C-Term)

1 Image

Overview

Quantity:	100 µL
Target:	c-Rel
Binding Specificity:	C-Term
Reactivity:	Human, Dog, Horse, Rabbit
Host:	Rabbit
Clonality:	Polyclonal
Conjugate:	This c-Rel antibody is un-conjugated
Application:	Western Blotting (WB), Immunohistochemistry (IHC), Immunohistochemistry (Paraffin-embedded Sections) (IHC (p))

Product Details

Brand:	IHC-plus™
Immunogen:	Synthetic peptide from C-Terminus of human REL (Q04864, NP_002899). Percent identity by BLAST analysis: Human, Chimpanzee, Gorilla, Gibbon (100%), Orangutan, Monkey, Pig (92%), Bovine (90%), Galago, Rabbit (85%), Marmoset, Horse (84%), Elephant (83%). Type of Immunogen: Synthetic peptide
Specificity:	Human REL / c-Rel
Purification:	Immunoaffinity purified

Target Details

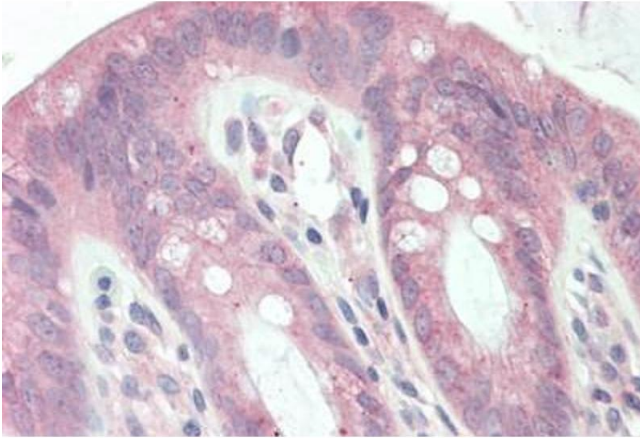
Target:	c-Rel
Alternative Name:	REL / C-Rel (c-Rel Products)
Background:	Name/Gene ID: REL Synonyms: REL, C-Rel, C-Rel proto-oncogene protein, I-Rel, Proto-oncogene c-Rel
Gene ID:	5966
NCBI Accession:	NP_002899

Application Details

Application Notes:	Approved: IHC, IHC-P (5 µg/mL), WB (0.2 - 1 µg/mL) Usage: Western Blot: Suggested dilution at 1 µg/mL in 5 % skim milk / PBS buffer, and HRP conjugated anti-Rabbit IgG should be diluted in 1: 50,000 - 100,000 as secondary antibody.
Comment:	Target Species of Antibody: Human
Restrictions:	For Research Use only

Handling

Format:	Lyophilized
Reconstitution:	Distilled water
Concentration:	Lot specific
Buffer:	Lyophilized from PBS with 2 % sucrose
Handling Advice:	Avoid repeat freeze-thaw cycles.
Storage:	4 °C, -20 °C
Storage Comment:	Long term: -20°C, the use of 50% glycerol is recommended if storing aliquots in -20°C for long term use (up to 1 year) Short term (less than 1 week): 4°C. Avoid freeze-thaw cycles.



Immunohistochemistry

Image 1. Human Colon: Formalin-Fixed, Paraffin-Embedded (FFPE)