



[Go to Product page](#)

Datasheet for ABIN6754887
anti-TCF12 antibody (N-Term)

2 Images

Overview

Quantity:	100 µL
Target:	TCF12
Binding Specificity:	N-Term
Reactivity:	Human
Host:	Rabbit
Clonality:	Polyclonal
Conjugate:	This TCF12 antibody is un-conjugated
Application:	Western Blotting (WB), Immunohistochemistry (IHC), Immunohistochemistry (Paraffin-embedded Sections) (IHC (p))

Product Details

Brand:	IHC-plus™
Immunogen:	Synthetic peptide from N-Terminus of human TCF12 (Q99081, NP_003196). Percent identity by BLAST analysis: Human (100%), Gorilla, Gibbon, Monkey, Mouse, Rat, Hamster, Elephant, Panda, Bovine, Pig, Opossum (92%). Type of Immunogen: Synthetic peptide
Isotype:	IgG
Specificity:	Human TCF12
Purification:	Immunoaffinity purified

Target Details

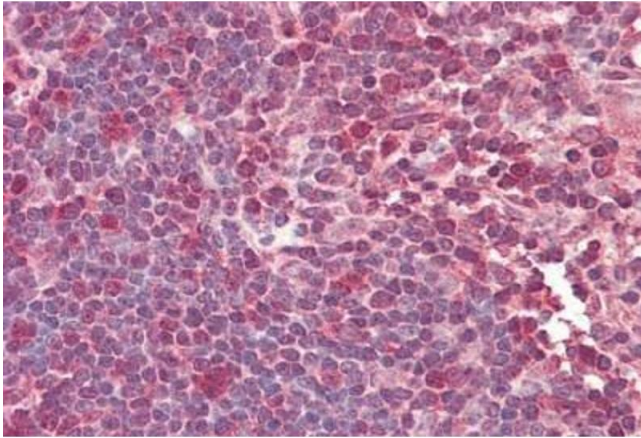
Target:	TCF12
Alternative Name:	TCF12 / HEB (TCF12 Products)
Background:	Name/Gene ID: TCF12 Family: Transcription factor Synonyms: TCF12, BHLHb20, E-box-binding protein, HEB, HsT17266, HTF4, TCF-12, Transcription factor 12, Transcription factor HTF-4, DNA-binding protein HTF4
Gene ID:	6938
NCBI Accession:	NP_003196
Pathways:	SARS-CoV-2 Protein Interactome

Application Details

Application Notes:	Approved: IHC, IHC-P (5 µg/mL), WB (0.2 - 1 µg/mL)
Comment:	Target Species of Antibody: Human
Restrictions:	For Research Use only

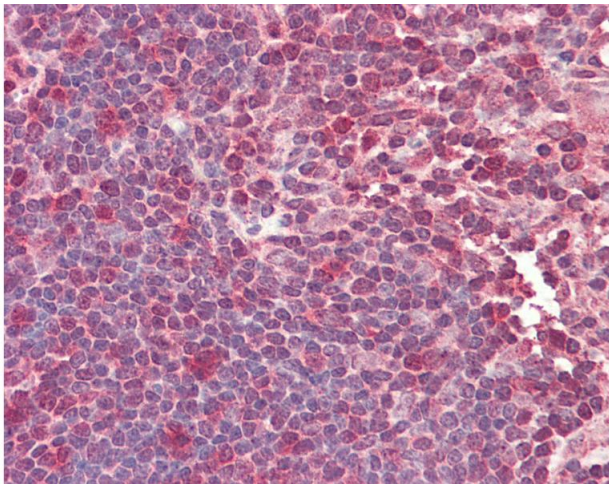
Handling

Format:	Lyophilized
Reconstitution:	After adding water, will consist of PBS buffer with 2 % sucrose
Concentration:	Lot specific
Buffer:	Lyophilized from PBS with 2 % sucrose
Handling Advice:	Avoid repeat freeze-thaw cycles.
Storage:	4 °C,-20 °C
Storage Comment:	Long term: -20°C, the use of 50% glycerol is recommended if storing aliquots in -20°C for long term use (up to 1 year) Short term (less than 1 week): 4°C. Avoid freeze-thaw cycles.



Immunohistochemistry

Image 1. Human Thymus: Formalin-Fixed, Paraffin-Embedded (FFPE)



Immunohistochemistry

Image 2. Anti-TCF12 / HEB antibody IHC staining of human thymus. Immunohistochemistry of formalin-fixed, paraffin-embedded tissue after heat-induced antigen retrieval. Antibody concentration 5 ug/ml. This image was taken for the unconjugated form of this pro ...