



[Go to Product page](#)

Datasheet for ABIN6754889
anti-TADA3L antibody (C-Term)

2 Images

Overview

Quantity:	100 µL
Target:	TADA3L (TADA3)
Binding Specificity:	C-Term
Reactivity:	Human, Mouse, Rat, Dog, Rabbit, Cow, Guinea Pig, Horse, Bat, Chicken, Monkey, Pig
Host:	Rabbit
Clonality:	Polyclonal
Conjugate:	This TADA3L antibody is un-conjugated
Application:	Western Blotting (WB), Immunohistochemistry (IHC), Immunohistochemistry (Paraffin-embedded Sections) (IHC (p))

Product Details

Brand:	IHC-plus™
Immunogen:	Synthetic peptide from C-Terminus of human TADA3 (O75528, NP_006345). Percent identity by BLAST analysis: Human, Chimpanzee, Gorilla, Orangutan, Gibbon, Monkey, Galago, Marmoset, Mouse, Rat, Elephant, Panda, Dog, Bovine, Bat, Rabbit, Horse, Pig, Opossum, Guinea pig, Turkey, Chicken, Platypus (100%), Lizard, Xenopus, Seabass, Stickleback, Zebrafish (92%). Type of Immunogen: Synthetic peptide
Isotype:	IgG
Specificity:	Human TADA3 / TADA3L
Purification:	Immunoaffinity purified

Target Details

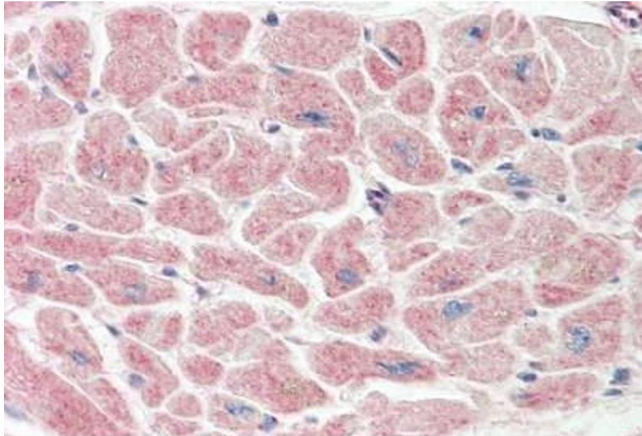
Target:	TADA3L (TADA3)
Alternative Name:	TADA3 / ADA3 (TADA3 Products)
Background:	Name/Gene ID: TADA3 Synonyms: TADA3, ADA3 homolog, ADA3, ADA3-like protein, HADA3, NGG1, STAF54, TADA3L, Transcriptional adapter 3-like, Transcriptional adaptor 3, Transcriptional adapter 3
Gene ID:	10474
NCBI Accession:	NP_006345
Pathways:	Intracellular Steroid Hormone Receptor Signaling Pathway

Application Details

Application Notes:	Approved: IHC, IHC-P (5 µg/mL), WB (0.2 - 1 µg/mL)
Comment:	Target Species of Antibody: Human
Restrictions:	For Research Use only

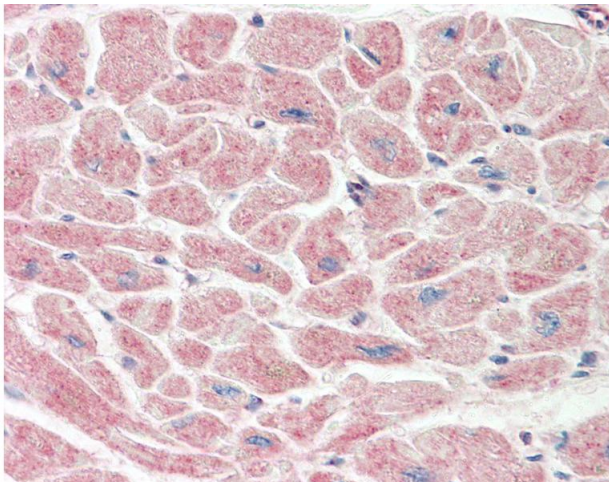
Handling

Format:	Lyophilized
Reconstitution:	Distilled water
Concentration:	Lot specific
Buffer:	Lyophilized from PBS with 2 % sucrose
Handling Advice:	Avoid repeat freeze-thaw cycles.
Storage:	4 °C, -20 °C
Storage Comment:	Long term: -20°C, the use of 50% glycerol is recommended if storing aliquots in -20°C for long term use (up to 1 year) Short term (less than 1 week): 4°C. Avoid freeze-thaw cycles.



Immunohistochemistry

Image 1. Human Heart: Formalin-Fixed, Paraffin-Embedded (FFPE)



Immunohistochemistry

Image 2. Anti-TADA3 / ADA3 antibody IHC staining of human heart. Immunohistochemistry of formalin-fixed, paraffin-embedded tissue after heat-induced antigen retrieval. Antibody concentration 5 ug/ml. This image was taken for the unconjugated form of this pro ...