



[Go to Product page](#)

Datasheet for ABIN6754893  
**anti-RBPMS antibody (C-Term)**

2 Images

Overview

Quantity:	100 µL
Target:	RBPMS
Binding Specificity:	C-Term
Reactivity:	Human, Rat, Mouse, Dog, Cow, Guinea Pig, Horse, Monkey
Host:	Rabbit
Clonality:	Polyclonal
Conjugate:	This RBPMS antibody is un-conjugated
Application:	Western Blotting (WB), Immunohistochemistry (IHC), Immunohistochemistry (Paraffin-embedded Sections) (IHC (p))

Product Details

Brand:	IHC-plus™
Immunogen:	Synthetic peptide from C-Terminus of human RBPMS (Q569H2, NP_001008712). Percent identity by BLAST analysis: Human, Chimpanzee, Gorilla, Monkey, Marmoset, Mouse, Rat, Elephant, Dog, Bovine, Horse, Guinea pig (100%), Rabbit (92%).  Type of Immunogen: Synthetic peptide
Isotype:	IgG
Specificity:	Human RBPMS
Purification:	Immunoaffinity purified

## Target Details

---

Target:	BPMS
Alternative Name:	BPMS / Hermes ( <a href="#">BPMS Products</a> )
Background:	Name/Gene ID: BPMS  Synonyms: BPMS, Rbp-ms/type 5, BP-MS, HERMES
Gene ID:	11030
NCBI Accession:	<a href="#">NP_001008712</a>

## Application Details

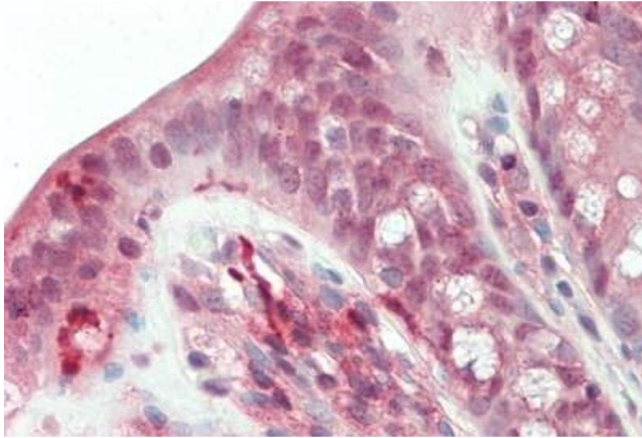
---

Application Notes:	Approved: IHC, IHC-P (5 µg/mL), WB (0.2 - 1 µg/mL)  Usage: Western Blot: Suggested dilution at 1 µg/mL in 5 % skim milk / PBS buffer, and HRP conjugated anti-Rabbit IgG should be diluted in 1: 50,000 - 100,000 as second antibody. ELISA titer in peptide based assay: 1:312500.
Comment:	Target Species of Antibody: Human
Restrictions:	For Research Use only

## Handling

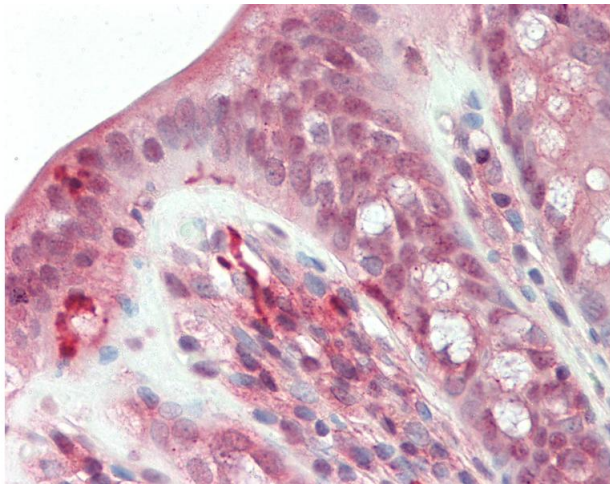
---

Format:	Lyophilized
Reconstitution:	Distilled water
Concentration:	Lot specific
Buffer:	Lyophilized from PBS with 2 % sucrose
Handling Advice:	Avoid repeat freeze-thaw cycles.
Storage:	4 °C,-20 °C
Storage Comment:	Long term: -20°C, the use of 50% glycerol is recommended if storing aliquots in -20°C for long term use (up to 1 year)  Short term (less than 1 week): 4°C. Avoid freeze-thaw cycles.



### Immunohistochemistry

**Image 1.** Human Colon: Formalin-Fixed, Paraffin-Embedded (FFPE)



### Immunohistochemistry

**Image 2.** Anti-RBPMS / Hermes antibody IHC staining of human colon. Immunohistochemistry of formalin-fixed, paraffin-embedded tissue after heat-induced antigen retrieval. Antibody concentration 5 ug/ml. This image was taken for the unconjugated form of this p ...