



[Go to Product page](#)

Datasheet for ABIN6754894
anti-RBML2 antibody (AA 215-264)

2 Images

Overview

Quantity:	100 µL
Target:	RBML2
Binding Specificity:	AA 215-264
Reactivity:	Human, Mouse
Host:	Rabbit
Clonality:	Polyclonal
Conjugate:	This RBML2 antibody is un-conjugated
Application:	Western Blotting (WB), Immunohistochemistry (IHC), Immunohistochemistry (Paraffin-embedded Sections) (IHC (p))

Product Details

Brand:	IHC-plus™
Immunogen:	Synthetic peptide located between aa215-264 of human RBML2 (O75526, NP_055284). Percent identity by BLAST analysis: Human, Chimpanzee, Gibbon (100%), Monkey (92%), Bovine (84%), Mouse, Rat (76%). Type of Immunogen: Synthetic peptide
Isotype:	IgG
Specificity:	Human RBML2
Purification:	Immunoaffinity purified

Target Details

Target: RBMXL2

Alternative Name: RBMXL2 ([RBMXL2 Products](#))

Background: Name/Gene ID: RBMXL2

Synonyms: RBMXL2, HNRNPG-T, HNRNPGT, HnRNP G-T, HNRPGT

Gene ID: 27288

NCBI Accession: [NP_055284](#)

Application Details

Application Notes: Approved: IHC, IHC-P (5 µg/mL), WB (0.2 - 1 µg/mL)

Usage: Western Blot: Suggested dilution at 1 µg/mL in 5 % skim milk / PBS buffer, and HRP conjugated anti-Rabbit IgG should be diluted in 1: 50,000 - 100,000 as second antibody. ELISA titer in peptide based assay: 1:62500.

Comment: Target Species of Antibody: Human

Restrictions: For Research Use only

Handling

Format: Lyophilized

Reconstitution: Distilled water

Concentration: Lot specific

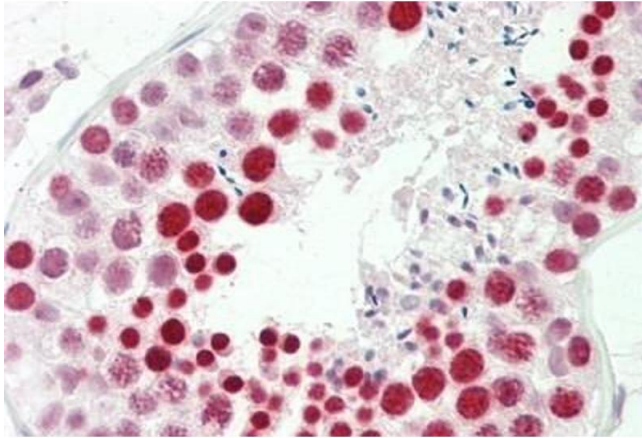
Buffer: Lyophilized from PBS with 2 % sucrose

Handling Advice: Avoid repeat freeze-thaw cycles.

Storage: 4 °C, -20 °C

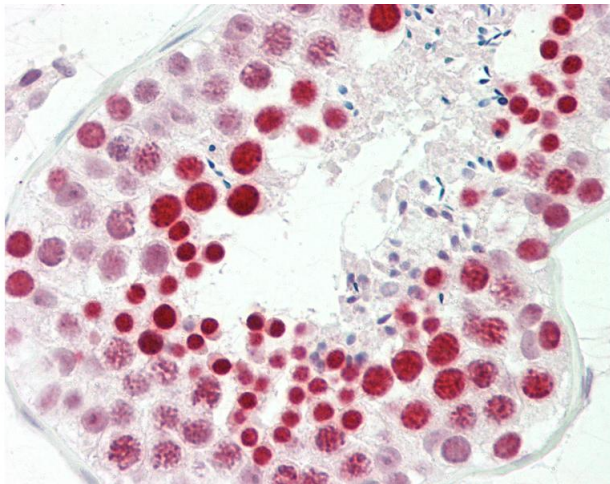
Storage Comment: Long term: -20°C, the use of 50% glycerol is recommended if storing aliquots in -20°C for long term use (up to 1 year)

Short term (less than 1 week): 4°C. Avoid freeze-thaw cycles.



Immunohistochemistry

Image 1. Human Testis: Formalin-Fixed, Paraffin-Embedded (FFPE)



Immunohistochemistry

Image 2. Anti-RBML2 antibody IHC staining of human testis. Immunohistochemistry of formalin-fixed, paraffin-embedded tissue after heat-induced antigen retrieval. Antibody concentration 5 ug/ml. This image was taken for the unconjugated form of this product. ...