

Datasheet for ABIN6754902 anti-CHP antibody (AA 35-84)



[Go to Product page](#)

2 Images

Overview

Quantity:	100 µL
Target:	CHP
Binding Specificity:	AA 35-84
Reactivity:	Human, Rat, Mouse, Cow, Dog, Guinea Pig, Horse, Rabbit, Chicken, Hamster, Monkey, Pig, Xenopus laevis
Host:	Rabbit
Clonality:	Polyclonal
Conjugate:	This CHP antibody is un-conjugated
Application:	Western Blotting (WB), Immunohistochemistry (IHC), Immunohistochemistry (Paraffin-embedded Sections) (IHC (p))

Product Details

Brand:	IHC-plus™
Immunogen:	Synthetic peptide located between aa35-84 of human CHP1 (Q99653, NP_009167). Percent identity by BLAST analysis: Human, Chimpanzee, Orangutan, Gibbon, Monkey, Mouse, Rat, Hamster, Elephant, Panda, Dog, Bovine, Rabbit, Horse, Pig, Opossum, Guinea pig, Chicken, Platypus, Lizard, Xenopus (100%), Catfish, Zebrafish (92%). Type of Immunogen: Synthetic peptide
Specificity:	Human CHP
Purification:	Immunoaffinity purified

Target Details

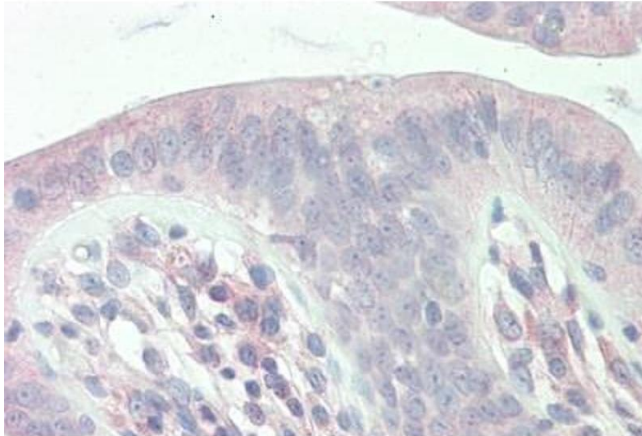
Target:	CHP
Alternative Name:	SLC9A1BP / CHP (CHP Products)
Background:	<p>Name/Gene ID: CHP1</p> <p>Synonyms: CHP1, Calcium-binding protein p22, Calcineurin B homolog, Calcium binding protein P22, Calcium-binding protein CHP, Calcineurin B-like protein, CHP, p22, SLC9A1 binding protein, SLC9A1BP, Sid470p, Calcineurin homologous protein, p24</p>
Gene ID:	11261
NCBI Accession:	NP_009167
Pathways:	Proton Transport , Regulation of Carbohydrate Metabolic Process , VEGF Signaling

Application Details

Application Notes:	<p>Approved: IHC, IHC-P (10 µg/mL), WB (0.2 - 1 µg/mL)</p> <p>Usage: Western Blot: Suggested dilution at 0.25 µg/mL in 5 % skim milk / PBS buffer, and HRP conjugated anti-Rabbit IgG should be diluted in 1: 50,000 - 100,000 as secondary antibody.</p>
Comment:	Target Species of Antibody: Human
Restrictions:	For Research Use only

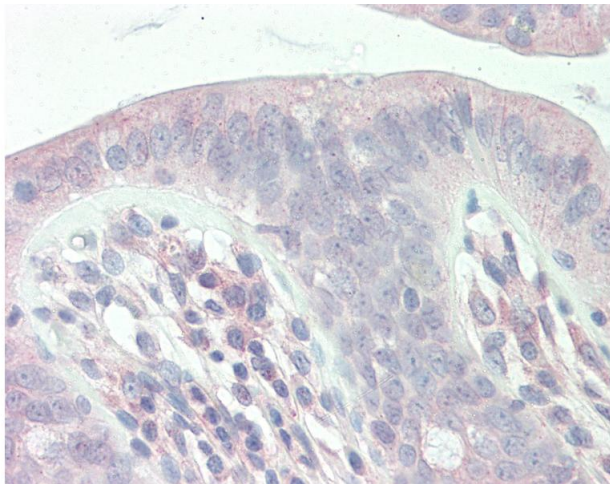
Handling

Format:	Lyophilized
Reconstitution:	Distilled water
Concentration:	Lot specific
Buffer:	Lyophilized from PBS with 2 % sucrose
Handling Advice:	Avoid repeat freeze-thaw cycles.
Storage:	4 °C, -20 °C
Storage Comment:	<p>Long term: -20°C, the use of 50% glycerol is recommended if storing aliquots in -20°C for long term use (up to 1 year)</p> <p>Short term (less than 1 week): 4°C. Avoid freeze-thaw cycles.</p>



Immunohistochemistry

Image 1. Human Colon: Formalin-Fixed, Paraffin-Embedded (FFPE)



Immunohistochemistry

Image 2. Anti-SLC9A1BP / CHP antibody IHC staining of human colon. Immunohistochemistry of formalin-fixed, paraffin-embedded tissue after heat-induced antigen retrieval. Antibody concentration 10 ug/ml. This image was taken for the unconjugated form of this ...