



[Go to Product page](#)

Datasheet for ABIN6754903  
**anti-NUP98 antibody (AA 201-250)**

1 Image

### Overview

Quantity:	100 µL
Target:	NUP98
Binding Specificity:	AA 201-250
Reactivity:	Human, Rat, Horse, Rabbit, Cow, Monkey
Host:	Rabbit
Clonality:	Polyclonal
Conjugate:	This NUP98 antibody is un-conjugated
Application:	Western Blotting (WB), Immunohistochemistry (IHC), Immunohistochemistry (Paraffin-embedded Sections) (IHC (p))

### Product Details

Brand:	IHC-plus™
Immunogen:	Synthetic peptide located between aa201-250 of human NUP98 (A8KA17, NP_005378). Percent identity by BLAST analysis: Human, Chimpanzee, Gorilla, Gibbon, Monkey, Marmoset, Rat, Elephant, Bovine, Rabbit, Horse (100%), Galago, Mouse, Dog, Bat, Pig, Opossum, Guinea pig (92%), Platypus (85%).  Type of Immunogen: Synthetic peptide
Isotype:	IgG
Specificity:	Human NUP98
Purification:	Immunoaffinity purified

## Target Details

---

Target:	NUP98
Alternative Name:	NUP98 ( <a href="#">NUP98 Products</a> )
Background:	Name/Gene ID: NUP98  Synonyms: NUP98, ADAR2, ADIR2, Nucleoporin 98kD, Nup98-Nup96, Nucleoporin 98 kDa, NUP196, NUP96
Gene ID:	4928
NCBI Accession:	<a href="#">NP_005378</a>
Pathways:	<a href="#">Stem Cell Maintenance</a> , <a href="#">Protein targeting to Nucleus</a> , <a href="#">SARS-CoV-2 Protein Interactome</a>

## Application Details

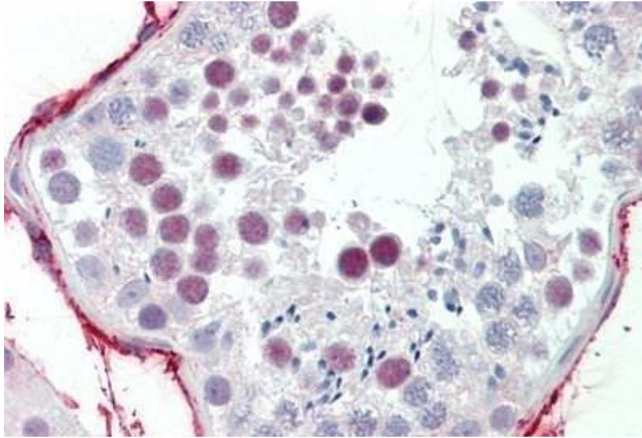
---

Application Notes:	Approved: IHC, IHC-P (5 µg/mL), WB (0.2 - 1 µg/mL)  Usage: ELISA titer using peptide based assay: 1:62500. Western Blot: Suggested dilution at 1 µg/mL in 5 % skim milk / PBS buffer, and HRP conjugated anti-Rabbit IgG should be diluted in 1:50000 - 100000 as second antibody.
Comment:	Target Species of Antibody: Human
Restrictions:	For Research Use only

## Handling

---

Format:	Lyophilized
Reconstitution:	Distilled Water.
Concentration:	Lot specific
Buffer:	Lyophilized from PBS with 2 % sucrose
Handling Advice:	Avoid repeat freeze-thaw cycles.
Storage:	4 °C,-20 °C
Storage Comment:	Long term: -20°C, the use of 50% glycerol is recommended if storing aliquots in -20°C for long term use (up to 1 year)  Short term (less than 1 week): 4°C. Avoid freeze-thaw cycles.



### Immunohistochemistry

**Image 1.** Human Testis: Formalin-Fixed, Paraffin-Embedded (FFPE)