



[Go to Product page](#)

Datasheet for ABIN6754905

anti-Leiomodin 1 antibody (N-Term)

2 Images

Overview

Quantity:	100 µL
Target:	Leiomodin 1 (LMOD1)
Binding Specificity:	N-Term
Reactivity:	Human, Mouse, Rat, Rabbit, Cow, Guinea Pig, Horse, Monkey, Pig, Xenopus laevis
Host:	Rabbit
Clonality:	Polyclonal
Conjugate:	This Leiomodin 1 antibody is un-conjugated
Application:	Western Blotting (WB), Immunohistochemistry (IHC), Immunohistochemistry (Paraffin-embedded Sections) (IHC (p))

Product Details

Brand:	IHC-plus™
Immunogen:	Synthetic peptide from N-Terminus of human LMOD1 (P29536, NP_036266). Percent identity by BLAST analysis: Human, Chimpanzee, Gorilla, Gibbon, Monkey, Galago, Mouse, Rat, Elephant, Bovine, Rabbit, Horse, Pig, Opossum, Guinea pig, Turkey, Platypus, Xenopus (100%), Lizard (83%). Type of Immunogen: Synthetic peptide
Isotype:	IgG
Specificity:	Human LMOD1
Purification:	Immunoaffinity purified

Target Details

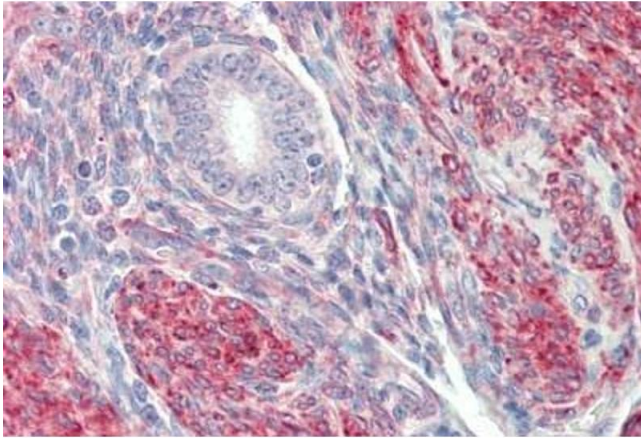
Target:	Leiomodin 1 (LMOD1)
Alternative Name:	LMOD1 (LMOD1 Products)
Background:	Name/Gene ID: LMOD1 Synonyms: LMOD1, 1D, 64kD, 64 kd autoantigen d1, 64 kDa autoantigen 1D, 64 kDa autoantigen 1D3, 64 kDa autoantigen D1, D1, Leiomodin, muscle form, Leiomodin-1, SM-LMOD, Smooth muscle leiomodin, Leimodin 1 (smooth muscle), Leiomodin 1 (smooth muscle)
Gene ID:	25802
NCBI Accession:	NP_036266

Application Details

Application Notes:	Approved: IHC, IHC-P (5 µg/mL), WB (0.2 - 1 µg/mL) Usage: ELISA titer using peptide based assay: 1:62500. Western Blot: Suggested dilution at 1 µg/mL in 5 % skim milk / PBS buffer, and HRP conjugated anti-Rabbit IgG should be diluted in 1:50000 - 100000 as second antibody.
Comment:	Target Species of Antibody: Human
Restrictions:	For Research Use only

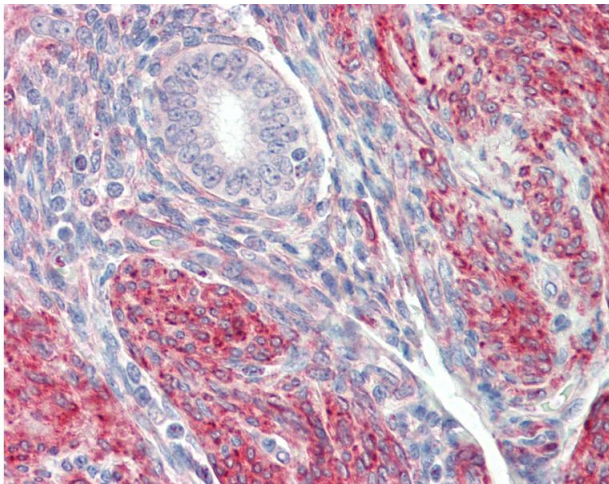
Handling

Format:	Lyophilized
Reconstitution:	Distilled Water.
Concentration:	Lot specific
Buffer:	Lyophilized from PBS with 2 % sucrose
Handling Advice:	Avoid repeat freeze-thaw cycles.
Storage:	4 °C,-20 °C
Storage Comment:	Long term: -20°C, the use of 50% glycerol is recommended if storing aliquots in -20°C for long term use (up to 1 year) Short term (less than 1 week): 4°C. Avoid freeze-thaw cycles.



Immunohistochemistry

Image 1. Human Uterus: Formalin-Fixed, Paraffin-Embedded (FFPE)



Immunohistochemistry

Image 2. Anti-LMOD1 antibody IHC staining of human uterus. Immunohistochemistry of formalin-fixed, paraffin-embedded tissue after heat-induced antigen retrieval. Antibody concentration 5 ug/ml. This image was taken for the unconjugated form of this product. ...