



[Go to Product page](#)

Datasheet for ABIN6754907
anti-H2AFY antibody (AA 144-193)

1 Image

Overview

Quantity:	100 µL
Target:	H2AFY
Binding Specificity:	AA 144-193
Reactivity:	Human, Rat, Mouse, Cow, Horse, Monkey
Host:	Rabbit
Clonality:	Polyclonal
Conjugate:	This H2AFY antibody is un-conjugated
Application:	Western Blotting (WB), Immunohistochemistry (IHC), Immunohistochemistry (Paraffin-embedded Sections) (IHC (p))

Product Details

Brand:	IHC-plus™
Immunogen:	Synthetic peptide located between aa144-193 of human H2AFY (O75367, NP_001035248). Percent identity by BLAST analysis: Human, Chimpanzee, Monkey, Marmoset, Mouse, Rat, Bovine, Horse, Platypus (100%), Gorilla, Gibbon, Galago, Elephant, Panda, Dog, Rabbit, Pig, Guinea pig, Turkey, Zebra finch, Chicken (93%), Opossum (86%). Type of Immunogen: Synthetic peptide
Isotype:	IgG
Specificity:	Human H2AFY
Purification:	Immunoaffinity purified

Target Details

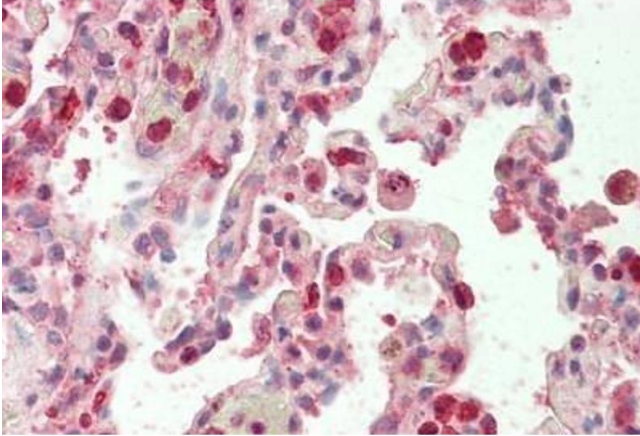
Target:	H2AFY
Alternative Name:	H2AFY / MACROH2A1 (H2AFY Products)
Background:	Name/Gene ID: H2AFY Synonyms: H2AFY, Core histone macro-H2A.1, Histone macroH2A1.1, H2A histone family, member Y, H2A.y, Histone H2A.y, MACROH2A1.1, MacroH2A1.2, H2AF12M, Histone macroH2A1.2, MACROH2A1, Histone macroH2A1, MH2A1
Gene ID:	9555
NCBI Accession:	NP_001035248

Application Details

Application Notes:	Approved: IHC, IHC-P (5 µg/mL), WB (0.2 - 1 µg/mL) Usage: Western Blot: Suggested dilution at 1 µg/mL in 5 % skim milk / PBS buffer, and HRP conjugated anti-Rabbit IgG should be diluted in 1: 50,000 - 100,000 as second antibody. ELISA titer in peptide based assay: 1:312500.
Comment:	Target Species of Antibody: Human
Restrictions:	For Research Use only

Handling

Format:	Lyophilized
Reconstitution:	Distilled water
Concentration:	Lot specific
Buffer:	Lyophilized from PBS with 2 % sucrose
Handling Advice:	Avoid repeat freeze-thaw cycles.
Storage:	4 °C,-20 °C
Storage Comment:	Long term: -20°C, the use of 50% glycerol is recommended if storing aliquots in -20°C for long term use (up to 1 year) Short term (less than 1 week): 4°C. Avoid freeze-thaw cycles.



Immunohistochemistry

Image 1. Human Lung: Formalin-Fixed, Paraffin-Embedded (FFPE)