

Datasheet for ABIN6754918
anti-CA1 antibody (N-Term)[Go to Product page](#)

2 Images

Overview

Quantity:	100 µL
Target:	CA1
Binding Specificity:	N-Term
Reactivity:	Human, Cow, Guinea Pig
Host:	Rabbit
Clonality:	Polyclonal
Conjugate:	This CA1 antibody is un-conjugated
Application:	Western Blotting (WB), Immunohistochemistry (IHC), Immunohistochemistry (Paraffin-embedded Sections) (IHC (p))

Product Details

Brand:	IHC-plus™
Immunogen:	Synthetic peptide from N-Terminus of human CA1 (P00915, NP_001729). Percent identity by BLAST analysis: Human, Chimpanzee, Gorilla, Gibbon, Monkey (100%), Marmoset (92%), Elephant (91%), Galago (83%), Rat (78%). Type of Immunogen: Synthetic peptide
Isotype:	IgG
Specificity:	Human CA1 / Carbonic Anhydrase I
Purification:	Immunoaffinity purified

Target Details

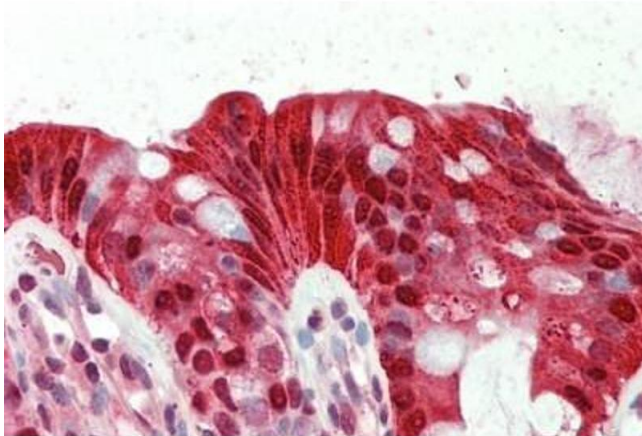
Target:	CA1
Alternative Name:	CA1 / Carbonic Anhydrase I (CA1 Products)
Background:	Name/Gene ID: CA1 Synonyms: CA1, CAB, Carbonic anhydrase 1, CAR1, Carbonate dehydratase I, Carbonic dehydratase, CA-I, Carbonic anhydrase B, Carbonic anhydrase I
Gene ID:	759
NCBI Accession:	NP_001729

Application Details

Application Notes:	Approved: IHC, IHC-P (5 µg/mL), WB (0.2 - 1 µg/mL) Usage: Western Blot: Suggested dilution at 1 µg/mL in 5 % skim milk / PBS buffer, and HRP conjugated anti-Rabbit IgG should be diluted in 1: 50,000 - 100,000 as second antibody. ELISA titer in peptide based assay: 1:312500.
Comment:	Target Species of Antibody: Human
Restrictions:	For Research Use only

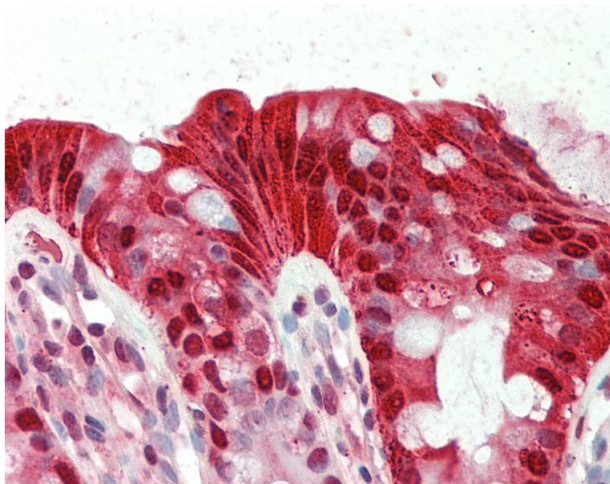
Handling

Format:	Lyophilized
Reconstitution:	Distilled water
Concentration:	Lot specific
Buffer:	Lyophilized from PBS with 2 % sucrose
Handling Advice:	Avoid repeat freeze-thaw cycles.
Storage:	4 °C, -20 °C
Storage Comment:	Long term: -20°C, the use of 50% glycerol is recommended if storing aliquots in -20°C for long term use (up to 1 year) Short term (less than 1 week): 4°C. Avoid freeze-thaw cycles.



Immunohistochemistry

Image 1. Human Colon: Formalin-Fixed, Paraffin-Embedded (FFPE)



Immunohistochemistry

Image 2. Anti-CA1 / Carbonic Anhydrase I antibody IHC staining of human colon. Immunohistochemistry of formalin-fixed, paraffin-embedded tissue after heat-induced antigen retrieval. Antibody concentration 5 ug/ml. This image was taken for the unconjugated fo ...