



[Go to Product page](#)

Datasheet for ABIN6754923

anti-CTBP1 antibody (C-Term)

3 Images

Overview

Quantity:	100 µL
Target:	CTBP1
Binding Specificity:	C-Term
Reactivity:	Human, Rat, Dog, Monkey
Host:	Rabbit
Clonality:	Polyclonal
Conjugate:	This CTBP1 antibody is un-conjugated
Application:	Western Blotting (WB), Immunohistochemistry (IHC), Immunohistochemistry (Paraffin-embedded Sections) (IHC (p))

Product Details

Brand:	IHC-plus™
Immunogen:	Synthetic peptide from C-Terminus of human CTBP1 (Q13363, NP_001319). Percent identity by BLAST analysis: Human, Chimpanzee, Gorilla, Gibbon, Monkey, Galago, Marmoset, Rat, Dog (100%), Mouse, Bat, Horse, Opossum, Zebra finch, Chicken, Platypus, Xenopus (92%). Type of Immunogen: Synthetic peptide
Isotype:	IgG
Specificity:	Human CtBP1
Purification:	Immunoaffinity purified

Target Details

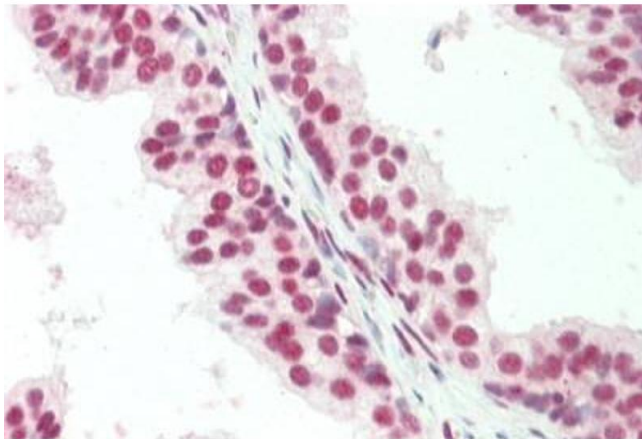
Target:	CTBP1
Alternative Name:	CTBP1 / CTBP (CTBP1 Products)
Background:	Name/Gene ID: CTBP1 Synonyms: CTBP1, BARS, C-terminal binding protein 1, C-terminal-binding protein 1, CTBP
Gene ID:	1487
NCBI Accession:	NP_001319
Pathways:	Retinoic Acid Receptor Signaling Pathway

Application Details

Application Notes:	Approved: IHC, IHC-P (5 µg/mL), WB (0.2 - 1 µg/mL)
Comment:	Target Species of Antibody: Human
Restrictions:	For Research Use only

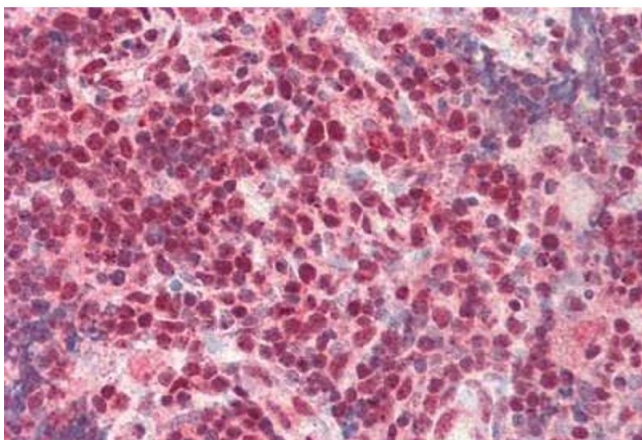
Handling

Format:	Lyophilized
Reconstitution:	After adding water, will consist of PBS buffer with 2 % sucrose
Concentration:	Lot specific
Buffer:	Lyophilized from PBS with 2 % sucrose
Handling Advice:	Avoid repeat freeze-thaw cycles.
Storage:	4 °C, -20 °C
Storage Comment:	Long term: -20°C, the use of 50% glycerol is recommended if storing aliquots in -20°C for long term use (up to 1 year) Short term (less than 1 week): 4°C. Avoid freeze-thaw cycles.



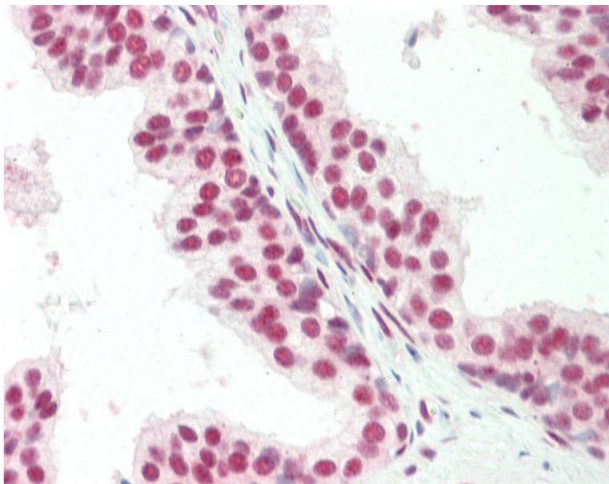
Immunohistochemistry

Image 1. Human, Prostate: Formalin-Fixed Paraffin-Embedded (FFPE)



Immunohistochemistry

Image 2. Human, Thymus: Formalin-Fixed Paraffin-Embedded (FFPE)



Immunohistochemistry

Image 3. Human, Prostate: Formalin-Fixed Paraffin-Embedded (FFPE). This image was taken for the unconjugated form of this product. Other forms have not been tested.