

Datasheet for ABIN6754933  
**anti-TROVE2 antibody (AA 20-69)**[Go to Product page](#)

## 2 Images

## Overview

Quantity:	100 µL
Target:	TROVE2
Binding Specificity:	AA 20-69
Reactivity:	Human, Mouse, Dog, Guinea Pig, Rabbit, Monkey, Bat
Host:	Rabbit
Clonality:	Polyclonal
Conjugate:	This TROVE2 antibody is un-conjugated
Application:	Western Blotting (WB), Immunohistochemistry (IHC), Immunohistochemistry (Paraffin-embedded Sections) (IHC (p))

## Product Details

Brand:	IHC-plus™
Immunogen:	Synthetic peptide located between aa20-69 of human TROVE2 (Q5LJA0, NP_001035828). Percent identity by BLAST analysis: Human, Chimpanzee, Gorilla, Gibbon, Monkey, Galago, Marmoset, Mouse, Elephant, Panda, Dog, Bat, Rabbit, Opossum, Guinea pig, Platypus (100%), Rat, Bovine, Horse, Pig (92%), Zebra finch, Xenopus (85%), Turkey, Chicken (84%).  Type of Immunogen: Synthetic peptide
Isotype:	IgG
Specificity:	Human TROVE2
Purification:	Immunoaffinity purified

## Target Details

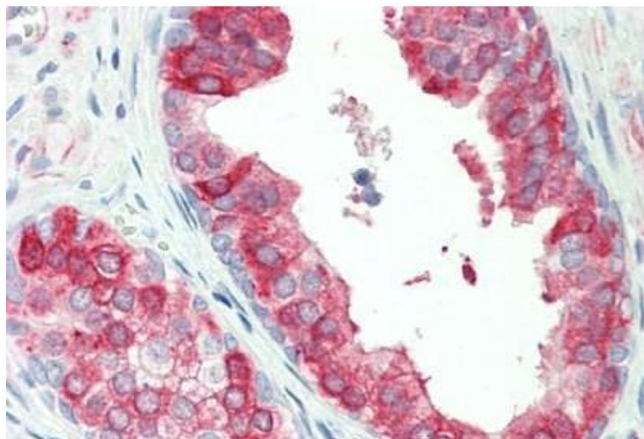
Target:	TROVE2
Alternative Name:	TROVE2 ( <a href="#">TROVE2 Products</a> )
Background:	Name/Gene ID: TROVE2  Synonyms: TROVE2, 60 kDa ribonucleoprotein Ro, 60 kDa Ro protein, Sjogren syndrome antigen A2, TROVE domain family member 2, Ro 60 kDa autoantigen, RORNp, SSA2, RO60, SS-A, TROVE domain family, member 2
Gene ID:	6738
NCBI Accession:	<a href="#">NP_001035828</a>

## Application Details

Application Notes:	Approved: IHC, IHC-P (5 µg/mL), WB (0.2 - 1 µg/mL)
Comment:	Target Species of Antibody: Human
Restrictions:	For Research Use only

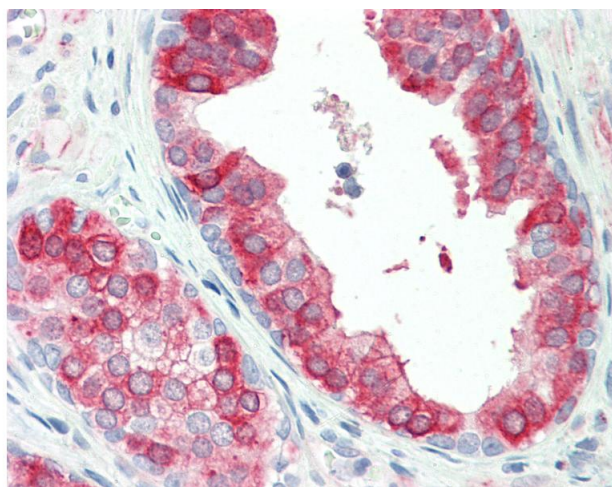
## Handling

Format:	Lyophilized
Reconstitution:	After adding water, will consist of PBS buffer with 2 % sucrose
Concentration:	Lot specific
Buffer:	Lyophilized from PBS with 2 % sucrose
Handling Advice:	Avoid repeat freeze-thaw cycles.
Storage:	4 °C, -20 °C
Storage Comment:	Long term: -20°C, the use of 50% glycerol is recommended if storing aliquots in -20°C for long term use (up to 1 year) Short term (less than 1 week): 4°C. Avoid freeze-thaw cycles.



#### Immunohistochemistry

**Image 1.** Human, Prostate:Formalin-Fixed Paraffin-Embedded (FFPE)



#### Immunohistochemistry

**Image 2.** Human, Prostate:Formalin-Fixed Paraffin-Embedded (FFPE). This image was taken for the unconjugated form of this product. Other forms have not been tested.