



Datasheet for ABIN6754936  
**anti-SLC37A4 antibody (AA 38-87)**



[Go to Product page](#)

3 Images

Overview

Quantity:	100 µL
Target:	SLC37A4
Binding Specificity:	AA 38-87
Reactivity:	Human, Mouse, Rat, Cow, Dog
Host:	Rabbit
Clonality:	Polyclonal
Conjugate:	This SLC37A4 antibody is un-conjugated
Application:	Western Blotting (WB), Immunohistochemistry (IHC), Immunohistochemistry (Paraffin-embedded Sections) (IHC (p))

Product Details

Brand:	IHC-plus™
Immunogen:	Synthetic peptide located between aa38-87 of human SLC37A4 (O43826, NP_001458). Percent identity by BLAST analysis: Human, Chimpanzee, Gorilla, Orangutan, Monkey, Panda, Dog, Bovine (100%), Marmoset, Elephant, Rabbit, Horse, Pig (92%), Mouse, Rat, Guinea pig (85%).  Type of Immunogen: Synthetic peptide
Isotype:	IgG
Specificity:	Human SLC37A4
Purification:	Immunoaffinity purified

## Target Details

---

Target:	SLC37A4
Alternative Name:	SLC37A4 / G6PT ( <a href="#">SLC37A4 Products</a> )
Background:	Name/Gene ID: SLC37A4 Subfamily: Glucose-6-phosphatate transporter Family: Transporter  Synonyms: SLC37A4, G6P translocase, GSD1b, G6PT1, G6PT3, GSD1d, PRO0685, TRG-19, G6PT, G6PT2, GSD1c
Gene ID:	2542
NCBI Accession:	<a href="#">NP_001458</a>
Pathways:	<a href="#">Carbohydrate Homeostasis</a> , <a href="#">Cellular Glucan Metabolic Process</a>

## Application Details

---

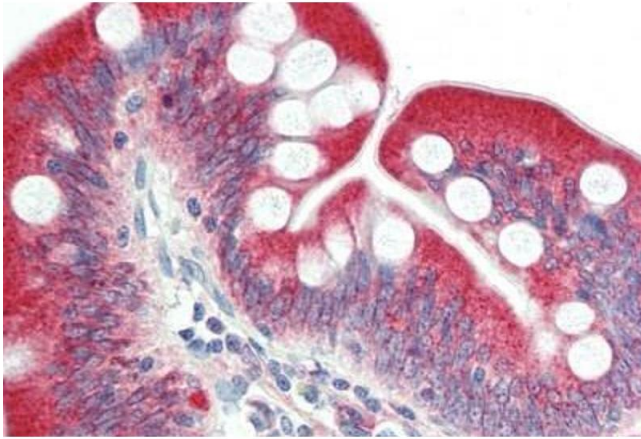
Application Notes:	Approved: IHC, IHC-P (5 µg/mL), WB  Usage: ELISA titer using peptide based assay: 1:312500. Western Blot: Suggested dilution at 1 µg/mL in 5 % skim milk / PBS buffer, and HRP conjugated anti-Rabbit IgG should be diluted in 1:50000 - 100000 as second antibody.
Comment:	Target Species of Antibody: Human
Restrictions:	For Research Use only

## Handling

---

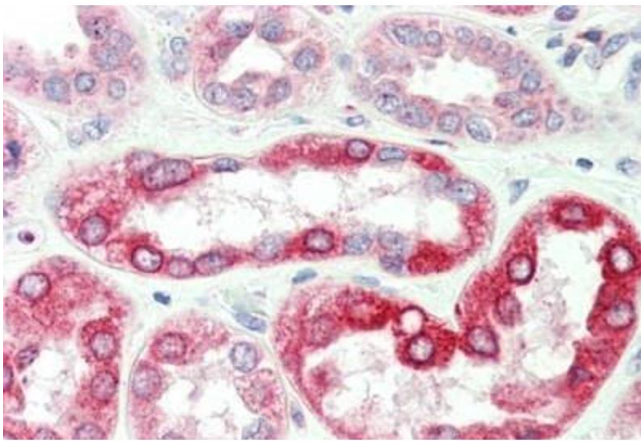
Format:	Lyophilized
Reconstitution:	Distilled Water.
Concentration:	Lot specific
Buffer:	Lyophilized from PBS with 2 % sucrose
Handling Advice:	Avoid repeat freeze-thaw cycles.
Storage:	4 °C, -20 °C
Storage Comment:	Long term: -20°C, the use of 50% glycerol is recommended if storing aliquots in -20°C for long term use (up to 1 year)

Short term (less than 1 week): 4°C. Avoid freeze-thaw cycles.



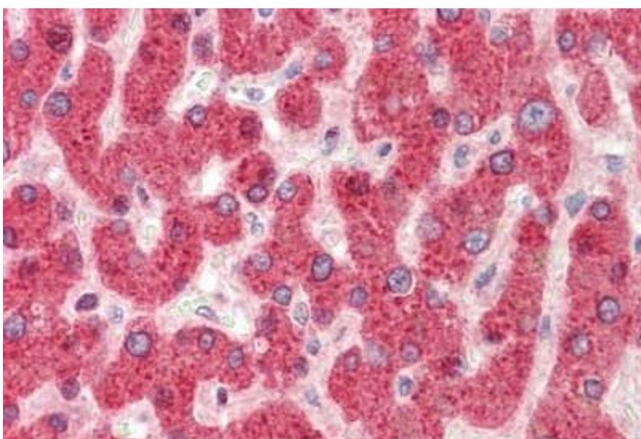
#### Immunohistochemistry

**Image 1.** Human, Small intestine: Formalin-Fixed Paraffin-Embedded (FFPE)



#### Immunohistochemistry

**Image 2.** Human, Kidney: Formalin-Fixed Paraffin-Embedded (FFPE)



#### Immunohistochemistry

**Image 3.** Human, Liver: Formalin-Fixed Paraffin-Embedded (FFPE)