



[Go to Product page](#)

Datasheet for ABIN6754944

anti-CYP3A4 antibody (AA 398-447)

2 Images

Overview

Quantity:	100 µL
Target:	CYP3A4
Binding Specificity:	AA 398-447
Reactivity:	Human
Host:	Rabbit
Clonality:	Polyclonal
Conjugate:	This CYP3A4 antibody is un-conjugated
Application:	Western Blotting (WB), Immunohistochemistry (IHC), Immunohistochemistry (Paraffin-embedded Sections) (IHC (p))

Product Details

Brand:	IHC-plus™
Immunogen:	Synthetic peptide located between aa398-447 of human CYP3A43 (Q9HB55, NP_073731). Percent identity by BLAST analysis: Human, Gorilla (100%), Chimpanzee, Orangutan, Monkey, Marmoset, Sheep, Cat, Bovine, Horse, Pig (92%), Gibbon, Mouse, Dog, Rabbit (84%), Rat (78%). Type of Immunogen: Synthetic peptide
Isotype:	IgG
Specificity:	Human CYP3A43
Purification:	Immunoaffinity purified

Target Details

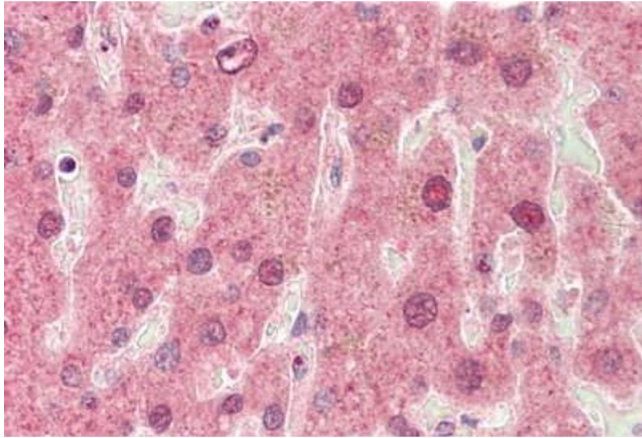
Target:	CYP3A4
Alternative Name:	CYP3A43 (CYP3A4 Products)
Background:	Name/Gene ID: CYP3A43 Family: Cytochrome P450 Synonyms: CYP3A43, Cytochrome P450 3A43, Cytochrome P450 polypeptide 43
Gene ID:	64816
NCBI Accession:	NP_073731
Pathways:	Steroid Hormone Biosynthesis

Application Details

Application Notes:	Approved: IHC, IHC-P (5 µg/mL), WB Usage: ELISA titer using peptide based assay: 1:312500. Western Blot: Suggested dilution at 1 µg/mL in 5 % skim milk / PBS buffer, and HRP conjugated anti-Rabbit IgG should be diluted in 1:50000 - 100000 as second antibody.
Comment:	Target Species of Antibody: Human
Restrictions:	For Research Use only

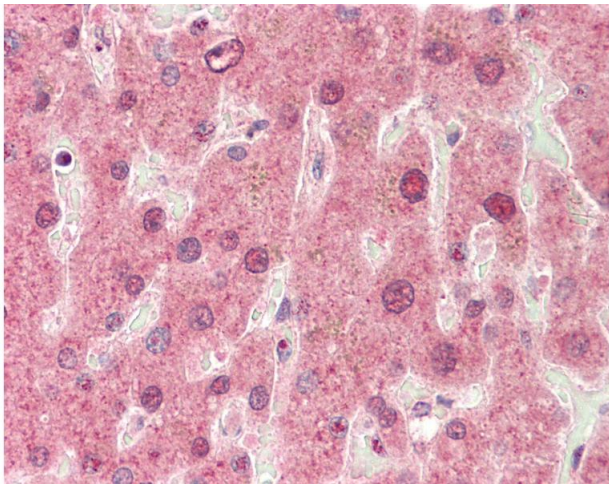
Handling

Format:	Lyophilized
Reconstitution:	Distilled Water.
Concentration:	Lot specific
Buffer:	Lyophilized from PBS with 2 % sucrose
Handling Advice:	Avoid repeat freeze-thaw cycles.
Storage:	4 °C,-20 °C
Storage Comment:	Long term: -20°C, the use of 50% glycerol is recommended if storing aliquots in -20°C for long term use (up to 1 year) Short term (less than 1 week): 4°C. Avoid freeze-thaw cycles.



Immunohistochemistry

Image 1. Human, Liver: Formalin-Fixed Paraffin-Embedded (FFPE)



Immunohistochemistry

Image 2. Human, Liver: Formalin-Fixed Paraffin-Embedded (FFPE). This image was taken for the unconjugated form of this product. Other forms have not been tested.