

Datasheet for ABIN6754945

anti-Glucose-6-Phosphate Dehydrogenase antibody (AA 180-229)[Go to Product page](#)**2** Images

Overview

Quantity:	100 µL
Target:	Glucose-6-Phosphate Dehydrogenase (G6PD)
Binding Specificity:	AA 180-229
Reactivity:	Human, Mouse, Rat, Dog, Guinea Pig
Host:	Rabbit
Clonality:	Polyclonal
Conjugate:	This Glucose-6-Phosphate Dehydrogenase antibody is un-conjugated
Application:	Western Blotting (WB), Immunohistochemistry (IHC), Immunohistochemistry (Paraffin-embedded Sections) (IHC (p))

Product Details

Brand:	IHC-plus™
Immunogen:	Synthetic peptide located between aa180-229 of human H6PD (O95479, NP_004276). Percent identity by BLAST analysis: Human, Gorilla, Marmoset, Mouse, Rat, Dog, Guinea pig (100%), Gibbon, Monkey, Galago, Bovine, Horse (92%), Elephant, Opossum (91%), Rabbit (85%). Type of Immunogen: Synthetic peptide
Isotype:	IgG
Specificity:	Human H6PD
Purification:	Immunoaffinity purified

Target Details

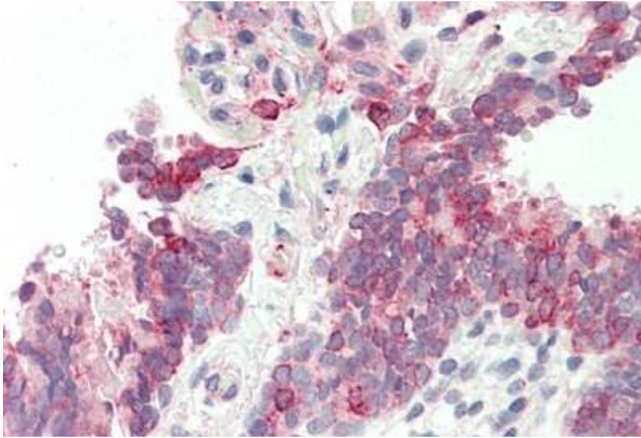
Target:	Glucose-6-Phosphate Dehydrogenase (G6PD)
Alternative Name:	H6PD / G6PDH (G6PD Products)
Background:	Name/Gene ID: H6PD Synonyms: H6PD, 6-phosphogluconolactonase, CORTRD1, Glucose dehydrogenase, G6PD, H form, Glucose dehydrogenase, G6PDH, Glucose 1- dehydrogenase, GDH
Gene ID:	9563
NCBI Accession:	NP_004276
Pathways:	Regulation of Systemic Arterial Blood Pressure by Hormones

Application Details

Application Notes:	Approved: IHC, IHC-P (5 µg/mL), WB (0.2 - 1 µg/mL) Usage: Western Blot: Suggested dilution at 1 µg/mL in 5 % skim milk / PBS buffer, and HRP conjugated anti-Rabbit IgG should be diluted in 1: 50,000 - 100,000 as second antibody. ELISA titer in peptide based assay: 1:312500.
Comment:	Target Species of Antibody: Human
Restrictions:	For Research Use only

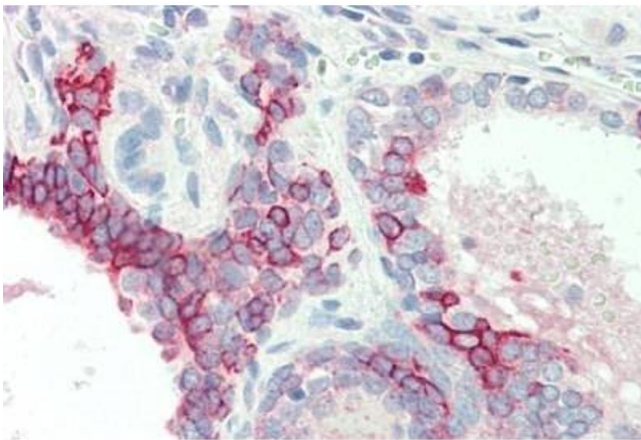
Handling

Format:	Lyophilized
Reconstitution:	Distilled water
Concentration:	Lot specific
Buffer:	Lyophilized from PBS with 2 % sucrose
Handling Advice:	Avoid repeat freeze-thaw cycles.
Storage:	4 °C,-20 °C
Storage Comment:	Long term: -20°C, the use of 50% glycerol is recommended if storing aliquots in -20°C for long term use (up to 1 year) Short term (less than 1 week): 4°C. Avoid freeze-thaw cycles.



Immunohistochemistry

Image 1. Human, Lung: Formalin-Fixed Paraffin-Embedded (FFPE)



Immunohistochemistry

Image 2. Human, Prostate: Formalin-Fixed Paraffin-Embedded (FFPE)