

Datasheet for ABIN6754950  
**anti-HADH antibody (C-Term)**

## 3 Images

[Go to Product page](#)

## Overview

Quantity:	100 µL
Target:	HADH
Binding Specificity:	C-Term
Reactivity:	Human, Mouse, Rat, Dog, Pig, Horse, Guinea Pig, Rabbit, Cow, Monkey, Bat
Host:	Rabbit
Clonality:	Polyclonal
Conjugate:	This HADH antibody is un-conjugated
Application:	Western Blotting (WB), Immunohistochemistry (IHC), Immunohistochemistry (Paraffin-embedded Sections) (IHC (p))

## Product Details

Brand:	IHC-plus™
Immunogen:	Synthetic peptide from C-Terminus of human HADH (Q16836, NP_005318). Percent identity by BLAST analysis: Human, Chimpanzee, Gorilla, Gibbon, Monkey, Galago, Marmoset, Mouse, Rat, Panda, Dog, Bovine, Bat, Rabbit, Horse, Pig, Opossum, Guinea pig, Platypus (100%), Elephant, Turkey, Zebra finch, Chicken, Xenopus, Trout, Catfish, Salmon, Smelt, Pike, Zebrafish (92%), Nematode (91%), Sea squirt (85%).  Type of Immunogen: Synthetic peptide
Isotype:	IgG
Specificity:	Human HADH / HADHSC

## Product Details

Purification: Immunoaffinity purified

## Target Details

Target: HADH

Alternative Name: SCHAD / HADHSC ([HADH Products](#))

Background: Name/Gene ID: HADH

Synonyms: HADH, HAD, HADH1, HCDH, HHF4, SCHAD, HADHSC, Hydroxyacyl-CoA dehydrogenase, MSCHAD

Gene ID: 3033

NCBI Accession: [NP\\_005318](#)

Pathways: [Negative Regulation of Hormone Secretion](#), [Monocarboxylic Acid Catabolic Process](#)

## Application Details

Application Notes: Approved: IHC, IHC-P (5 µg/mL), WB

Usage: ELISA titer using peptide based assay: 1:312500. Western Blot: Suggested dilution at 1 µg/mL in 5 % skim milk / PBS buffer, and HRP conjugated anti-Rabbit IgG should be diluted in 1:50000 - 100000 as second antibody.

Comment: Target Species of Antibody: Human

Restrictions: For Research Use only

## Handling

Format: Lyophilized

Reconstitution: Distilled Water.

Concentration: Lot specific

Buffer: Lyophilized from PBS with 2 % sucrose

Handling Advice: Avoid repeat freeze-thaw cycles.

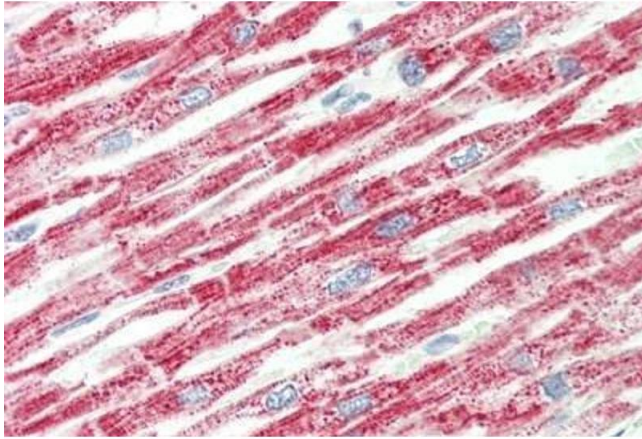
Storage: 4 °C, -20 °C

Storage Comment: Long term: -20°C, the use of 50% glycerol is recommended if storing aliquots in -20°C for long

term use (up to 1 year)

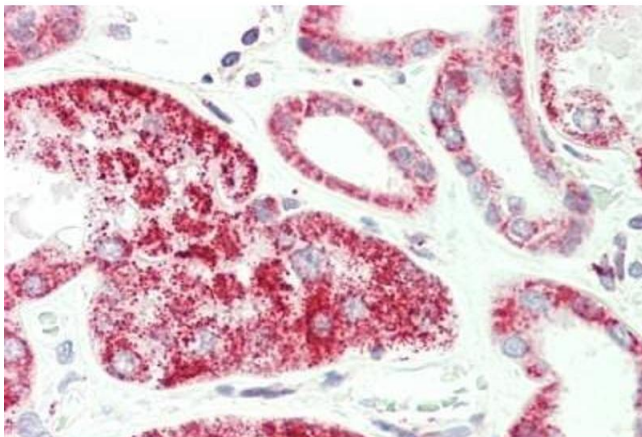
Short term (less than 1 week): 4°C. Avoid freeze-thaw cycles.

## Images



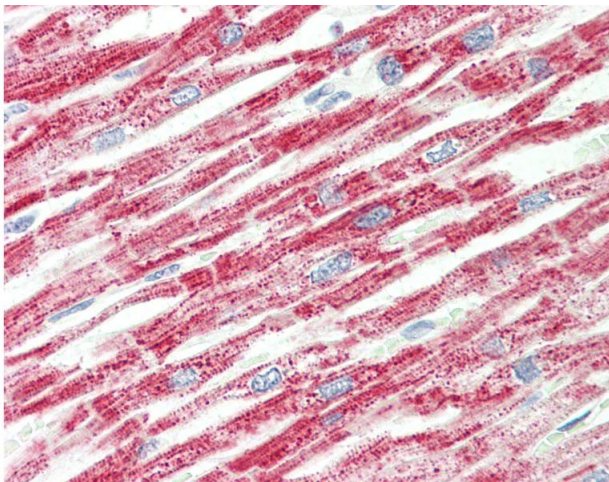
### Immunohistochemistry

**Image 1.** Human, Heart: Formalin-Fixed Paraffin-Embedded (FFPE)



### Immunohistochemistry

**Image 2.** Human, Kidney: Formalin-Fixed Paraffin-Embedded (FFPE)



### Immunohistochemistry

**Image 3.** Human, Heart: Formalin-Fixed Paraffin-Embedded (FFPE). This image was taken for the unconjugated form of this product. Other forms have not been tested.