



[Go to Product page](#)

Datasheet for ABIN6754951
anti-DNAJB1 antibody (AA 74-123)

2 Images

Overview

Quantity:	100 µL
Target:	DNAJB1
Binding Specificity:	AA 74-123
Reactivity:	Human, Bat
Host:	Rabbit
Clonality:	Polyclonal
Conjugate:	This DNAJB1 antibody is un-conjugated
Application:	Western Blotting (WB), Immunohistochemistry (IHC), Immunohistochemistry (Paraffin-embedded Sections) (IHC (p))

Product Details

Brand:	IHC-plus™
Immunogen:	Synthetic peptide located between aa74-123 of human DNAJB1 (P25685, NP_006136). Percent identity by BLAST analysis: Human, Chimpanzee, Gorilla, Bat (100%), Gibbon, Galago, Marmoset, Rat, Hamster, Elephant, Panda, Dog (92%), Bovine (85%). Type of Immunogen: Synthetic peptide
Isotype:	IgG
Specificity:	Human Heat Shock Protein 40 (Hsp40/DNAJ)
Purification:	Immunoaffinity purified

Target Details

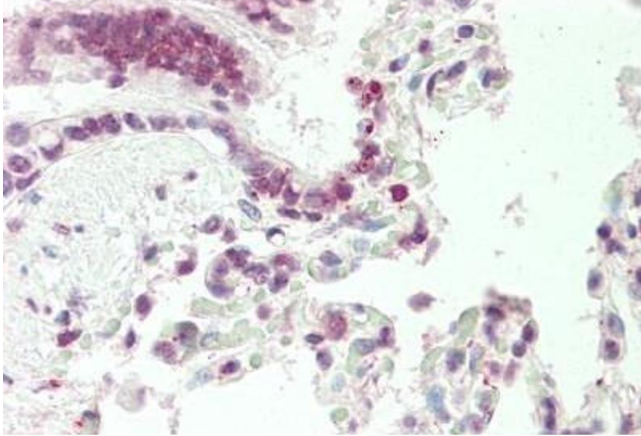
Target:	DNAJB1
Alternative Name:	DNAJB1 / Hsp40 (DNAJB1 Products)
Background:	Name/Gene ID: DNAJB1 Synonyms: DNAJB1, DnaJ protein homolog 1, DNAJ1, HDj-1, Hdj1, Heat shock 40 kDa protein 1, Hsp40, HSPF1, RSPH16B, Sis1, Radial spoke 16 homolog B, Heat shock 40kD protein 1, Heat shock protein 40, Human DnaJ protein 1
Gene ID:	3337
NCBI Accession:	NP_006136

Application Details

Application Notes:	Approved: IHC, IHC-P (5 µg/mL), WB Usage: ELISA titer using peptide based assay: 1:1562500. Western Blot: Suggested dilution at 1 µg/mL in 5 % skim milk / PBS buffer, and HRP conjugated anti-Rabbit IgG should be diluted in 1:50000 - 100000 as second antibody.
Comment:	Target Species of Antibody: Human
Restrictions:	For Research Use only

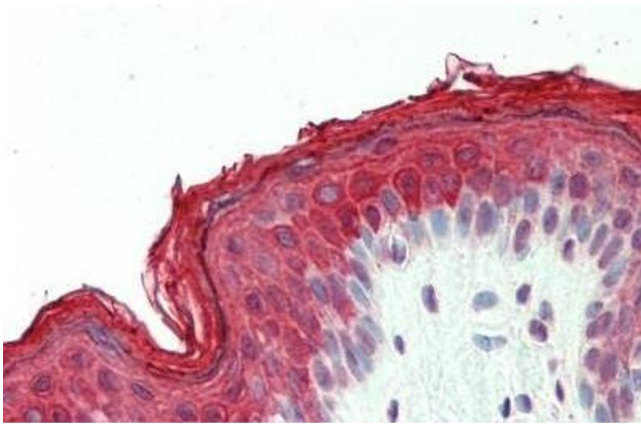
Handling

Format:	Lyophilized
Reconstitution:	Distilled Water.
Concentration:	Lot specific
Buffer:	Lyophilized from PBS with 2 % sucrose
Handling Advice:	Avoid repeat freeze-thaw cycles.
Storage:	4 °C,-20 °C
Storage Comment:	Long term: -20°C, the use of 50% glycerol is recommended if storing aliquots in -20°C for long term use (up to 1 year) Short term (less than 1 week): 4°C. Avoid freeze-thaw cycles.



Immunohistochemistry

Image 1. Human, Lung: Formalin-Fixed Paraffin-Embedded (FFPE)



Immunohistochemistry

Image 2. Human, Skin: Formalin-Fixed Paraffin-Embedded (FFPE)