

Datasheet for ABIN6754964  
**anti-HS6ST3 antibody (C-Term)**[Go to Product page](#)

## 1 Image

## Overview

Quantity:	100 µL
Target:	HS6ST3
Binding Specificity:	C-Term
Reactivity:	Mouse, Human, Guinea Pig, Rabbit, Monkey
Host:	Rabbit
Clonality:	Polyclonal
Conjugate:	This HS6ST3 antibody is un-conjugated
Application:	Western Blotting (WB), Immunohistochemistry (IHC), Immunohistochemistry (Paraffin-embedded Sections) (IHC (p))

## Product Details

Brand:	IHC-plus™
Immunogen:	Synthetic peptide from C-Terminus of human HS6ST3 (Q8IZP7, NP_703157). Percent identity by BLAST analysis: Human, Chimpanzee, Gorilla, Gibbon, Monkey, Galago, Marmoset, Mouse, Rabbit, Guinea pig (100%), Bovine, Bat, Horse, Pig (92%), Elephant (91%), Lizard (90%).  Type of Immunogen: Synthetic peptide
Isotype:	IgG
Specificity:	Human HS6ST3
Purification:	Immunoaffinity purified

## Target Details

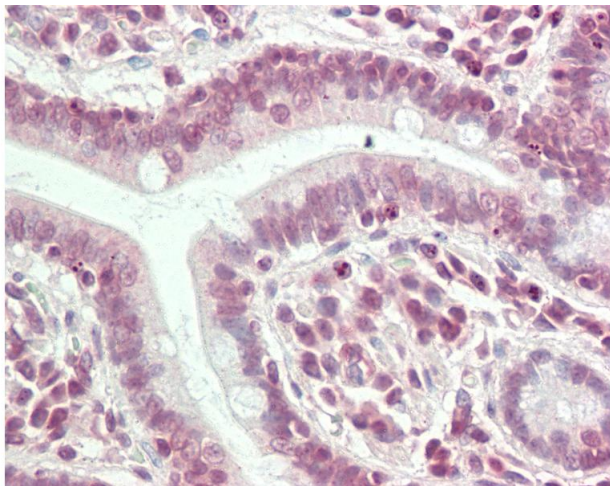
Target:	HS6ST3
Alternative Name:	HS6ST3 ( <a href="#">HS6ST3 Products</a> )
Background:	Name/Gene ID: HS6ST3  Synonyms: HS6ST3, HS6ST-3
Gene ID:	266722
NCBI Accession:	<a href="#">NP_703157</a>

## Application Details

Application Notes:	Approved: IHC, IHC-P (10 µg/mL), WB  Usage: ELISA titer using peptide based assay: 1:312500. Western Blot: Suggested dilution at 1 µg/mL in 5 % skim milk / PBS buffer, and HRP conjugated anti-Rabbit IgG should be diluted in 1:50000 - 100000 as second antibody.
Comment:	Target Species of Antibody: Human
Restrictions:	For Research Use only

## Handling

Format:	Lyophilized
Reconstitution:	Distilled Water.
Concentration:	Lot specific
Buffer:	Lyophilized from PBS with 2 % sucrose
Handling Advice:	Avoid repeat freeze-thaw cycles.
Storage:	4 °C, -20 °C
Storage Comment:	Long term: -20°C, the use of 50% glycerol is recommended if storing aliquots in -20°C for long term use (up to 1 year)  Short term (less than 1 week): 4°C. Avoid freeze-thaw cycles.



#### Immunohistochemistry

**Image 1.** Anti-HS6ST3 antibody IHC staining of human small intestine. Immunohistochemistry of formalin-fixed, paraffin-embedded tissue after heat-induced antigen retrieval. Antibody concentration 10 ug/ml. This image was taken for the unconjugated form of thi ...