

Datasheet for ABIN6754966  
**anti-SLPI antibody (AA 11-60)**[Go to Product page](#)

## 1 Image

## Overview

Quantity:	100 µL
Target:	SLPI
Binding Specificity:	AA 11-60
Reactivity:	Human
Host:	Rabbit
Clonality:	Polyclonal
Conjugate:	This SLPI antibody is un-conjugated
Application:	Western Blotting (WB), Immunohistochemistry (IHC), Immunohistochemistry (Paraffin-embedded Sections) (IHC (p))

## Product Details

Brand:	IHC-plus™
Immunogen:	Synthetic peptide located between aa11-60 of human SLPI (P03973, NP_003055). Percent identity by BLAST analysis: Human, Chimpanzee, Gorilla (100%), Orangutan, Gibbon, Baboon, Monkey (92%).  Type of Immunogen: Synthetic peptide
Specificity:	Human SLPI
Purification:	Immunoaffinity purified

## Target Details

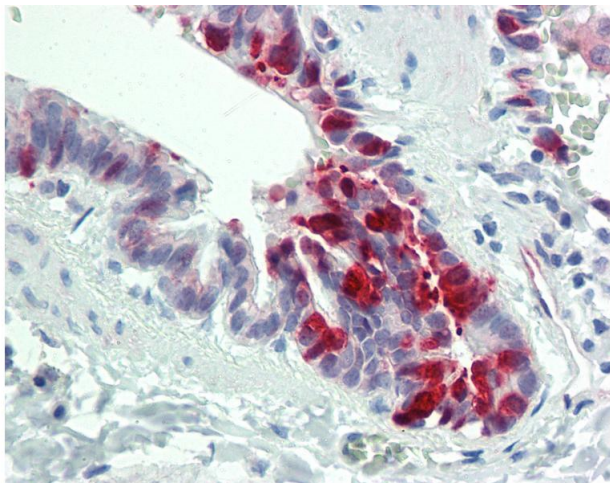
Target:	SLPI
Alternative Name:	SLPI ( <a href="#">SLPI Products</a> )
Background:	Name/Gene ID: SLPI  Synonyms: SLPI, ALK1, ALP, Antileukoprotease, BLPI, HUSI, Mucus proteinase inhibitor, HUSI-I, SLP1, Antileukoproteinase, Seminal proteinase inhibitor, WFDC4, HUSI-1, Protease inhibitor WAP4, WAP4
Gene ID:	6590
NCBI Accession:	<a href="#">NP_003055</a>

## Application Details

Application Notes:	Approved: IHC, IHC-P (10 µg/mL), WB (0.2 - 1 µg/mL)  Usage: Western Blot: Suggested dilution at 1 µg/mL in 5 % skim milk / PBS buffer, and HRP conjugated anti-Rabbit IgG should be diluted in 1: 50,000 - 100,000 as secondary antibody.
Comment:	Target Species of Antibody: Human
Restrictions:	For Research Use only

## Handling

Format:	Lyophilized
Reconstitution:	Distilled water
Concentration:	Lot specific
Buffer:	Lyophilized from PBS with 2 % sucrose
Handling Advice:	Avoid repeat freeze-thaw cycles.
Storage:	4 °C, -20 °C
Storage Comment:	Long term: -20°C, the use of 50% glycerol is recommended if storing aliquots in -20°C for long term use (up to 1 year)  Short term (less than 1 week): 4°C. Avoid freeze-thaw cycles.



#### Immunohistochemistry

**Image 1.** Anti-ALK1 / SLPI antibody IHC staining of human lung, respiratory epithelium. Immunohistochemistry of formalin-fixed, paraffin-embedded tissue after heat-induced antigen retrieval. Antibody concentration 10 ug/ml. This image was taken for the unconj ...