



[Go to Product page](#)

Datasheet for ABIN6754969

anti-ZMYND15 antibody (AA 137-186)

1 Image

Overview

Quantity:	100 µL
Target:	ZMYND15
Binding Specificity:	AA 137-186
Reactivity:	Human
Host:	Rabbit
Clonality:	Polyclonal
Conjugate:	This ZMYND15 antibody is un-conjugated
Application:	Western Blotting (WB), Immunohistochemistry (IHC), Immunohistochemistry (Paraffin-embedded Sections) (IHC (p))

Product Details

Brand:	IHC-plus™
Immunogen:	Synthetic peptide located between aa137-186 of human ZMYND15 (Q9H091-2, NP_115641). Percent identity by BLAST analysis: Human, Chimpanzee (100%). Type of Immunogen: Synthetic peptide
Specificity:	Human ZMYND15
Purification:	Immunoaffinity purified

Target Details

Target:	ZMYND15
---------	---------

Target Details

Alternative Name: ZMYND15 ([ZMYND15 Products](#))

Background: Name/Gene ID: ZMYND15
Family: Zinc Finger

Synonyms: ZMYND15

Gene ID: 84225

NCBI Accession: [NP_115641](#)

Application Details

Application Notes: Approved: IHC, IHC-P (5 µg/mL), WB

Comment: Target Species of Antibody: Human

Restrictions: For Research Use only

Handling

Format: Lyophilized

Reconstitution: Distilled water

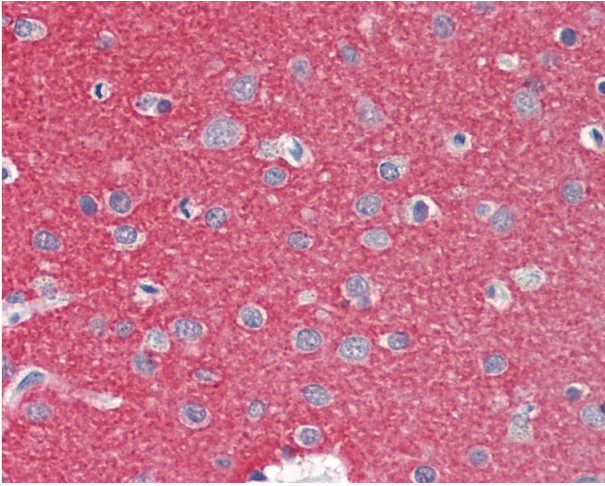
Concentration: Lot specific

Buffer: Lyophilized from PBS with 2 % sucrose

Handling Advice: Avoid repeat freeze-thaw cycles.

Storage: 4 °C, -20 °C

Storage Comment: Long term: -20°C, the use of 50% glycerol is recommended if storing aliquots in -20°C for long term use (up to 1 year)
Short term (less than 1 week): 4°C. Avoid freeze-thaw cycles.



Immunohistochemistry

Image 1. Anti-ZMYND15 antibody IHC staining of human brain, cortex. Immunohistochemistry of formalin-fixed, paraffin-embedded tissue after heat-induced antigen retrieval. Antibody concentration 5 ug/ml. This image was taken for the unconjugated form of this ...