

Datasheet for ABIN6755274  
**anti-WDR6 antibody (AA 334-383)**[Go to Product page](#)

## 1 Image

## Overview

Quantity:	100 µL
Target:	WDR6
Binding Specificity:	AA 334-383
Reactivity:	Human, Mouse, Rat, Guinea Pig, Monkey, Pig
Host:	Rabbit
Clonality:	Polyclonal
Conjugate:	This WDR6 antibody is un-conjugated
Application:	Western Blotting (WB), Immunohistochemistry (IHC), Immunohistochemistry (Paraffin-embedded Sections) (IHC (p))

## Product Details

Brand:	IHC-plus™
Immunogen:	Synthetic peptide located between aa334-383 of human WDR6 (Q6AZD6). Percent identity by BLAST analysis: Human, Chimpanzee, Gorilla, Orangutan, Gibbon, Monkey, Marmoset, Mouse, Rat, Elephant, Pig, Guinea pig (100%), Galago, Dog, Bovine, Bat, Rabbit, Horse (92%).  Type of Immunogen: Synthetic peptide
Isotype:	IgG
Specificity:	Human WDR6
Purification:	Immunoaffinity purified

## Target Details

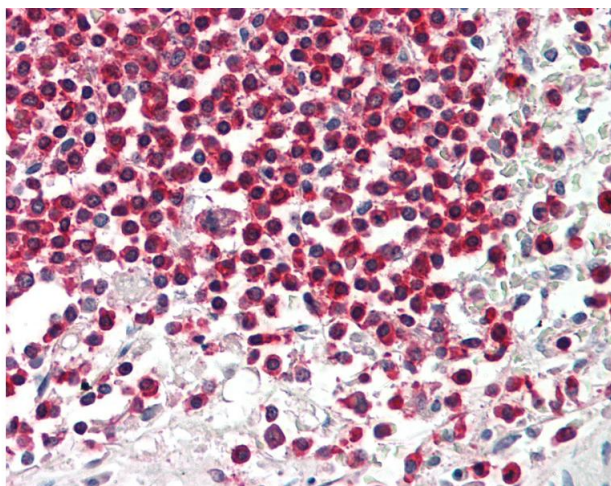
Target:	WDR6
Alternative Name:	WDR6 ( <a href="#">WDR6 Products</a> )
Background:	Name/Gene ID: WDR6  Synonyms: WDR6, WD repeat-containing protein 6, Wd-repeat protein 6, WD repeat domain 6
Gene ID:	11180

## Application Details

Application Notes:	Approved: IHC, IHC-P (10 µg/mL), WB (0.2 - 1 µg/mL)
Comment:	Target Species of Antibody: Human
Restrictions:	For Research Use only

## Handling

Format:	Lyophilized
Reconstitution:	After adding water, will consist of PBS buffer with 2 % sucrose
Concentration:	Lot specific
Buffer:	Lyophilized from PBS with 2 % sucrose
Handling Advice:	Avoid repeat freeze-thaw cycles.
Storage:	4 °C, -20 °C
Storage Comment:	Long term: -20°C, the use of 50% glycerol is recommended if storing aliquots in -20°C for long term use (up to 1 year) Short term (less than 1 week): 4°C. Avoid freeze-thaw cycles.



#### Immunohistochemistry

**Image 1.** Anti-WDR6 antibody IHC staining of human spleen. Immunohistochemistry of formalin-fixed, paraffin-embedded tissue after heat-induced antigen retrieval. Antibody concentration 10 ug/ml. This image was taken for the unconjugated form of this product. ...