



Datasheet for ABIN6755278  
**anti-SLC22A16 antibody (AA 101-150)**



[Go to Product page](#)

1 Image

Overview

Quantity:	100 µL
Target:	SLC22A16
Binding Specificity:	AA 101-150
Reactivity:	Human
Host:	Rabbit
Clonality:	Polyclonal
Conjugate:	This SLC22A16 antibody is un-conjugated
Application:	Western Blotting (WB), Immunohistochemistry (Paraffin-embedded Sections) (IHC (p))

Product Details

Brand:	IHC-plus™
Immunogen:	Synthetic peptide located between aa101-150 of human SLC22A16 (Q96RU0, NP_149116). Percent identity by BLAST analysis: Human, Chimpanzee, Gorilla (100%), Gibbon, Monkey (92%).  Type of Immunogen: Synthetic peptide
Isotype:	IgG
Specificity:	Human SLC22A16
Purification:	Protein A purified

Target Details

Target:	SLC22A16
---------	----------

## Target Details

---

Alternative Name:	SLC22A16 ( <a href="#">SLC22A16 Products</a> )
Background:	Name/Gene ID: SLC22A16 Subfamily: Organic cation transporter Family: Transporter  Synonyms: SLC22A16, Carnitine transporter 2, CT2, Flipt 2, FLIPT2, OKB1, OCT6, WUGSC:RG331P03.1, DJ261K5.1, OAT6, Organic cation transporter 6
Gene ID:	85413
NCBI Accession:	<a href="#">NP_149116</a>

## Application Details

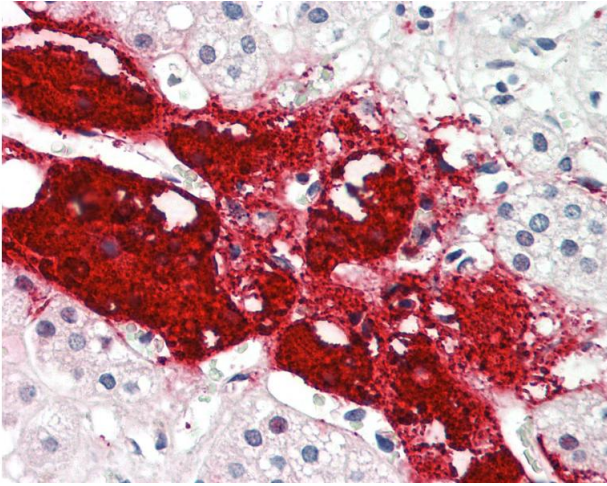
---

Application Notes:	Approved: IHC-P (10 µg/mL), WB (2.5 µg/mL)
Restrictions:	For Research Use only

## Handling

---

Format:	Lyophilized
Reconstitution:	After adding water, will consist of PBS buffer with 2 % sucrose
Concentration:	Lot specific
Buffer:	Lyophilized from PBS with 2 % sucrose
Handling Advice:	Avoid repeat freeze-thaw cycles.
Storage:	4 °C,-20 °C
Storage Comment:	Long term: -20°C, the use of 50% glycerol is recommended if storing aliquots in -20°C for long term use (up to 1 year) Short term (less than one week): +4°C. Avoid repeat freeze-thaw cycles.



### Immunohistochemistry

**Image 1.** Anti-SLC22A16 antibody IHC staining of human adrenal. Immunohistochemistry of formalin-fixed, paraffin-embedded tissue after heat-induced antigen retrieval. Antibody concentration 10 ug/ml. This image was taken for the unconjugated form of this prod ...