

Datasheet for ABIN6755279  
**anti-SIL1 antibody (AA 360-409)**[Go to Product page](#)

## 1 Image

## Overview

Quantity:	100 µL
Target:	SIL1
Binding Specificity:	AA 360-409
Reactivity:	Human, Mouse, Rat, Cow, Dog, Guinea Pig, Horse, Rabbit, Bat, Chicken, Monkey
Host:	Rabbit
Clonality:	Polyclonal
Conjugate:	This SIL1 antibody is un-conjugated
Application:	Western Blotting (WB), Immunohistochemistry (IHC), Immunohistochemistry (Paraffin-embedded Sections) (IHC (p))

## Product Details

Brand:	IHC-plus™
Immunogen:	<p>Synthetic peptide located between aa360-409 of human SIL1 (Q9H173, NP_001032722).</p> <p>Percent identity by BLAST analysis: Human, Chimpanzee, Gorilla, Monkey, Galago, Marmoset, Mouse, Rat, Elephant, Dog, Bovine, Bat, Rabbit, Horse, Guinea pig, Turkey, Chicken (100%), Xenopus (84%), Zebra finch (83%).</p> <p>Type of Immunogen: Synthetic peptide</p>
Isotype:	IgG
Specificity:	Human SIL1
Purification:	Immunoaffinity purified

## Target Details

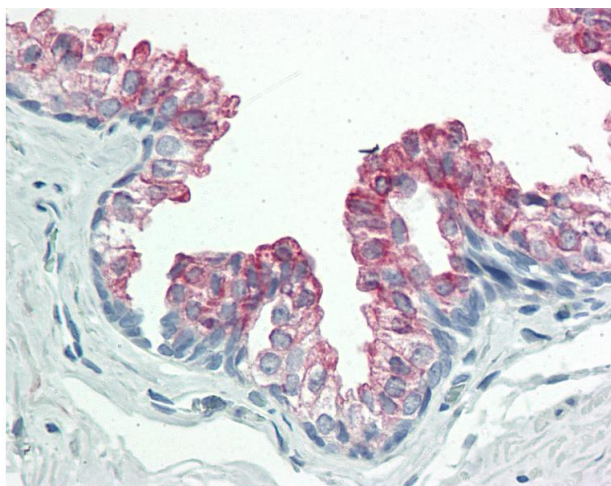
Target:	SIL1
Alternative Name:	BAP / SIL1 ( <a href="#">SIL1 Products</a> )
Background:	Name/Gene ID: SIL1  Synonyms: SIL1, BiP-associated protein, BAP, Marinesco-Sjogren syndrome, MSS, ULG5
Gene ID:	64374
NCBI Accession:	<a href="#">NP_001032722</a>
Pathways:	<a href="#">Unfolded Protein Response</a> , <a href="#">SARS-CoV-2 Protein Interactome</a>

## Application Details

Application Notes:	Approved: IHC, IHC-P (10 µg/mL), WB  Usage: ELISA titer using peptide based assay: 1:312500. Western Blot: Suggested dilution at 1 µg/mL in 5 % skim milk / PBS buffer, and HRP conjugated anti-Rabbit IgG should be diluted in 1:50000 - 100000 as second antibody.
Comment:	Target Species of Antibody: Human
Restrictions:	For Research Use only

## Handling

Format:	Lyophilized
Reconstitution:	Reconstitute with 50 µL sterile ddH2O.
Concentration:	Lot specific
Buffer:	Lyophilized from PBS with 2 % sucrose
Handling Advice:	Avoid repeat freeze-thaw cycles.
Storage:	4 °C, -20 °C
Storage Comment:	Long term: -20°C, the use of 50% glycerol is recommended if storing aliquots in -20°C for long term use (up to 1 year)  Short term (less than 1 week): 4°C. Avoid freeze-thaw cycles.



#### Immunohistochemistry

**Image 1.** Anti-BAP / SIL1 antibody IHC staining of human prostate. Immunohistochemistry of formalin-fixed, paraffin-embedded tissue after heat-induced antigen retrieval. Antibody concentration 10 ug/ml. This image was taken for the unconjugated form of this p ...