



Datasheet for ABIN6755280
anti-Patched 2 antibody (AA 362-411)



[Go to Product page](#)

1 Image

Overview

Quantity:	100 µL
Target:	Patched 2 (PTCH2)
Binding Specificity:	AA 362-411
Reactivity:	Human, Cow, Dog, Horse, Rabbit, Monkey
Host:	Rabbit
Clonality:	Polyclonal
Conjugate:	This Patched 2 antibody is un-conjugated
Application:	Western Blotting (WB), Immunohistochemistry (IHC), Immunohistochemistry (Paraffin-embedded Sections) (IHC (p))

Product Details

Brand:	IHC-plus™
Immunogen:	Synthetic peptide located between aa362-411 of human PTCH2 (Q9Y6C5, NP_003729). Percent identity by BLAST analysis: Human, Gibbon, Monkey, Galago, Marmoset, Elephant, Dog, Bovine, Horse (100%), Mouse, Bat (92%), Rabbit (85%). Type of Immunogen: Synthetic peptide
Isotype:	IgG
Specificity:	Human PTCH2
Purification:	Immunoaffinity purified

Target Details

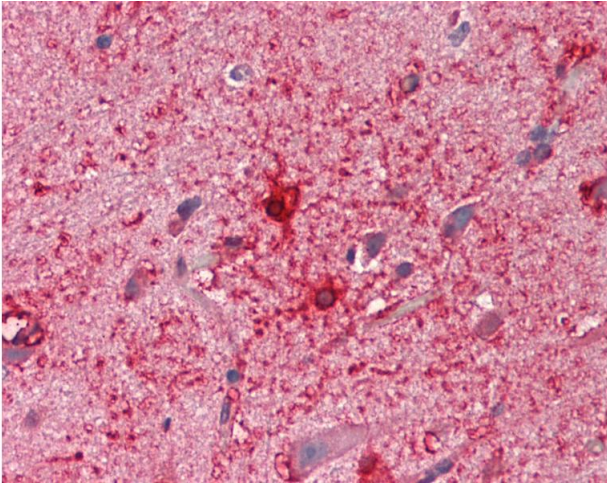
Target:	Patched 2 (PTCH2)
Alternative Name:	PTCH2 (PTCH2 Products)
Background:	Name/Gene ID: PTCH2 Synonyms: PTCH2, Patched (Drosophila) homolog 2, Patched 2, Patched homolog 2, Patched homolog 2 (Drosophila), Protein patched homolog 2, PTC2
Gene ID:	8643
NCBI Accession:	NP_003729
Pathways:	Hedgehog Signaling

Application Details

Application Notes:	Approved: IHC, IHC-P (10 µg/mL), WB Usage: ELISA titer using peptide based assay: 1:312500. Western Blot: Suggested dilution at 1 µg/mL in 5 % skim milk / PBS buffer, and HRP conjugated anti-Rabbit IgG should be diluted in 1:50000 - 100000 as second antibody.
Comment:	Target Species of Antibody: Human
Restrictions:	For Research Use only

Handling

Format:	Lyophilized
Reconstitution:	Distilled Water.
Concentration:	Lot specific
Buffer:	Lyophilized from PBS with 2 % sucrose
Handling Advice:	Avoid repeat freeze-thaw cycles.
Storage:	4 °C,-20 °C
Storage Comment:	Long term: -20°C, the use of 50% glycerol is recommended if storing aliquots in -20°C for long term use (up to 1 year) Short term (less than 1 week): 4°C. Avoid freeze-thaw cycles.



Immunohistochemistry

Image 1. Anti-PTCH2 antibody IHC staining of human brain, cortex. Immunohistochemistry of formalin-fixed, paraffin-embedded tissue after heat-induced antigen retrieval. Antibody concentration 10 ug/ml. This image was taken for the unconjugated form of this p ...